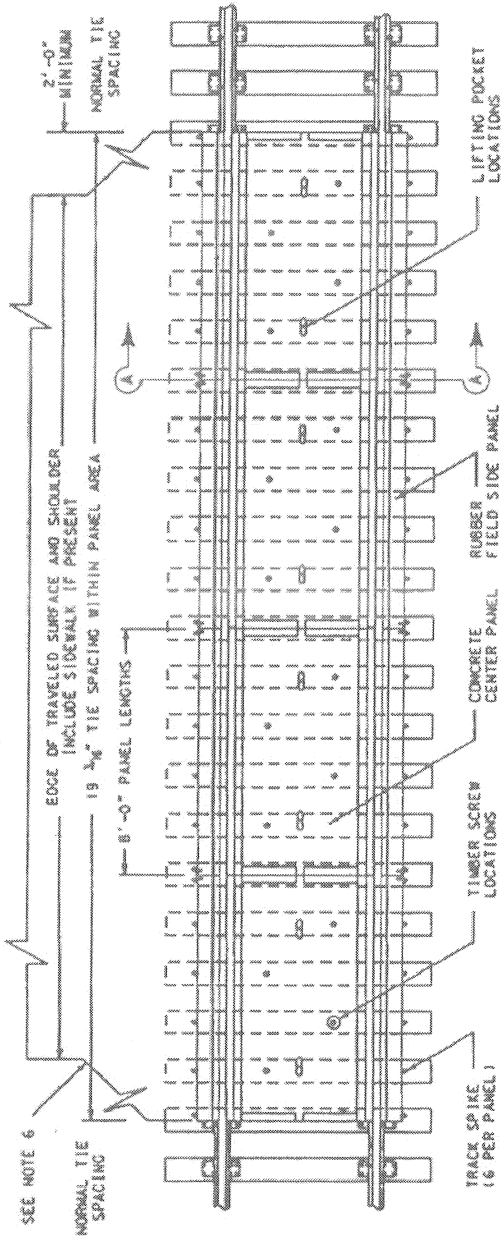


Diagram: Standard Concrete Road Crossing with Rubber Panels for Wood Ties (2524)

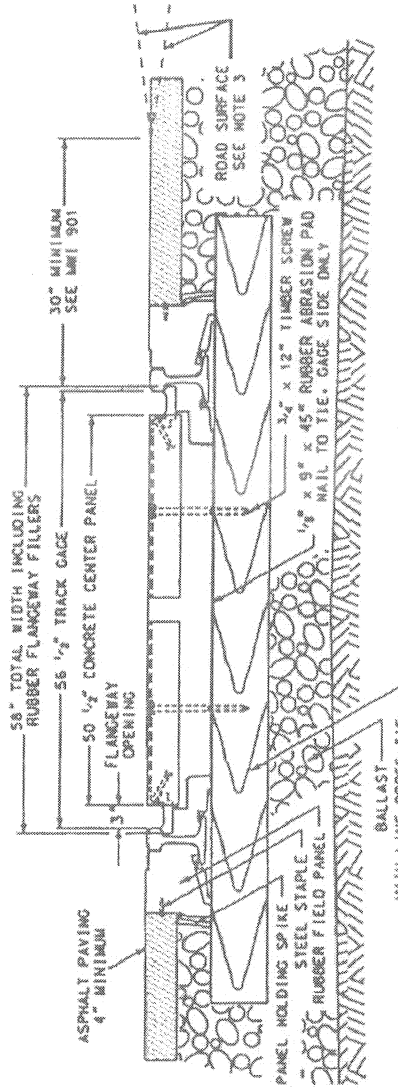
2524

NOTES

1. MVI 901 (LATEST REVISION) IS TO BE USED IN CONNECTION WITH THIS DRAWING. FOR NEW CONSTRUCTION, HIGHWAY SHOULD INTERSECT RAILROAD AT OR NEARLY RIGHT ANGLES.
2. FOR NEW CONSTRUCTION, HIGHWAY SURFACE SHOULD NOT BE MORE THAN 3" HIGHER NOR 5" LOWER THAN TOP OF BEAM RAIL 50' FROM AND AT RIGHT ANGLES TO RAIL UNLESS TRACK SUPERELEVATION DICTATES OTHERWISE.
3. USE STATE DOT SPECIFICATIONS FOR BITUMINOUS CONCRETE AND ASPHALT SPRAY CROSSING IS LOCATED.
4. CROSSING SHOULD BE CONTINUOUS BETWEEN ROADWAY OR SIDEWALK EDGES. IF NOT PRACTICABLE, DRAINAGE MUST BE PROVIDED BETWEEN PAVED AREAS TO ELIMINATE SLUMP POCKETS.
5. BEFORE PAVING TO RETURN TO ORIGINAL PAVING IN CONTACT LENGTH OF TRANSITION WILL DEPEND ON TRACK CONDITIONS BUT SHOULD BE 10' FOR 1" TRACK RAISE SHOULD BE PROVIDED WHERE PRACTICABLE.
6. AT PAVEMENT TIE-IN POINT, THE OLD PAVEMENT MUST BE CUT DOWN A MINIMUM OF 2" TO ELIMINATE A FEATHER EDGE ON THE NEW PAVEMENT.
7. ENVIRONMENTAL RULES OF THE GOVERNMENTAL BODY HAVING AUTHORITY WILL BE FOLLOWED FROM THE CROSSING.
8. IF GEOTEXTILE REQUIRED, EXTEND 10' BEYOND EDGE OF CROSSING UNDER TRACK.
9. APPROXIMATE WEIGHT FOR 1.5M MATERIALS: CONCRETE CENTER PANEL - 3,300 LBS. RUBBER FIELD SIDE PANEL - 260 LBS.



CROSSING PLAN VIEW



NOT TO SCALE

ORDERING INFORMATION	
ITEM NO.	DESCRIPTION
014 5250270	115 - 122 PANEL, CROSSING, CONCRETE WITH RUBBER - ORDER IN 8 FT INCREMENTS IN "TRACK FEET" WHICH INCLUDES 1 CONCRETE CENTER AND 2 RUBBER FIELD SIDE PANELS AND ABRASION PADS FOR USE WITH WOOD TIES.
014 5250275	132 - 136



STANDARD CONCRETE ROAD CROSSING WITH RUBBER PANELS FOR WOOD TIES

SECTION A-A

SIGNED: \_\_\_\_\_  
 REVIEWED: \_\_\_\_\_  
 ENGINEERING STANDARDS  
 PREPARED BY: C. N. WITTY  
 APPROVED: \_\_\_\_\_  
 CHIEF ENGINEER,  
 MAINTENANCE OF WAY  
 ISSUED: MAY 22, 1999  
 REVISED: \_\_\_\_\_  
 INITIAL ISSUE

METROPOLITAN GOVERNMENT OF NASHVILLE AND DAVIDSON COUNTY DEPARTMENT OF PUBLIC WORKS

RAILROAD ROAD CROSSING

DWG. NO. ST-505

DIR. OF ENG.:

*Mark Vandy*

DATE: 4/5/07

REVISED: 04/05/2007  
 REVISED:  
 REVISED: