

FLOOD EDUCATION/ SAFETY

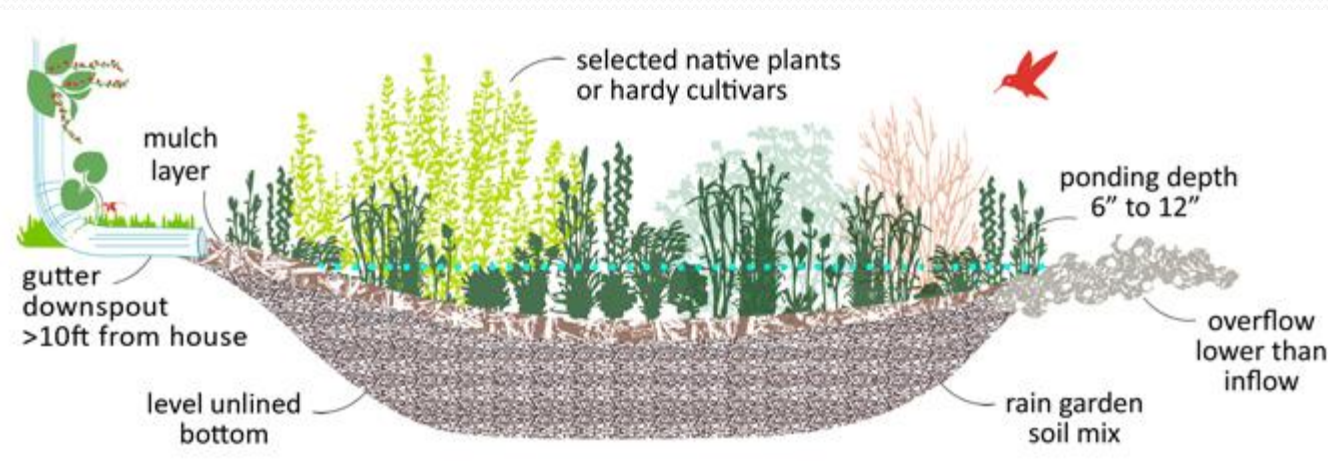
Metro Water Services

FLOOD EDUCATION/SAFETY

- What You Can Do...
 - Help Reduce Runoff On Your Property
 - Protect Your Property

What You Can Do

- Re-direct Downspouts
 - Easy and cheap, move toward a pervious surface (garden) instead of impervious (driveway)
- Install Rain Gardens
 - A garden that is intentionally planted to soak up and intercept stormwater runoff before reaching an impervious surface
 - Reduce water entering and overwhelming the public drainage system that could cause flooding to the surrounding neighborhood
- Install Rain Barrels
 - Easy and inexpensive way to collect and store rainwater
 - Help the environment by recycling the rainwater
 - Save on your water bill by using rainwater on lawn, plants, wash car, etc.
- Plant Trees
 - Not only absorbs stormwater but leaves and branches intercept and store rain delaying peak runoff flows



What You Can Do

- Respect the City's drainage system
 - Keep leaves, debris, grass clippings, or other potential blockages out of drains, channels, and streams
 - It is against Metro Codes to dump in a waterway

How You Can Help

When you are clearing your sidewalk or driveway, dispose of waste in trash receptacles instead of sweeping it into the gutters or catch basins.

If leaves or other debris are blocking a catch basin near your house or business, remove and dispose of the debris properly. In addition, during the winter months, try to maintain the openings to catch basins by clearing away any snow or ice.

Become a steward of the environment and help to reduce local street-flooding during storms by clearing debris or snow from the tops of catch basins.



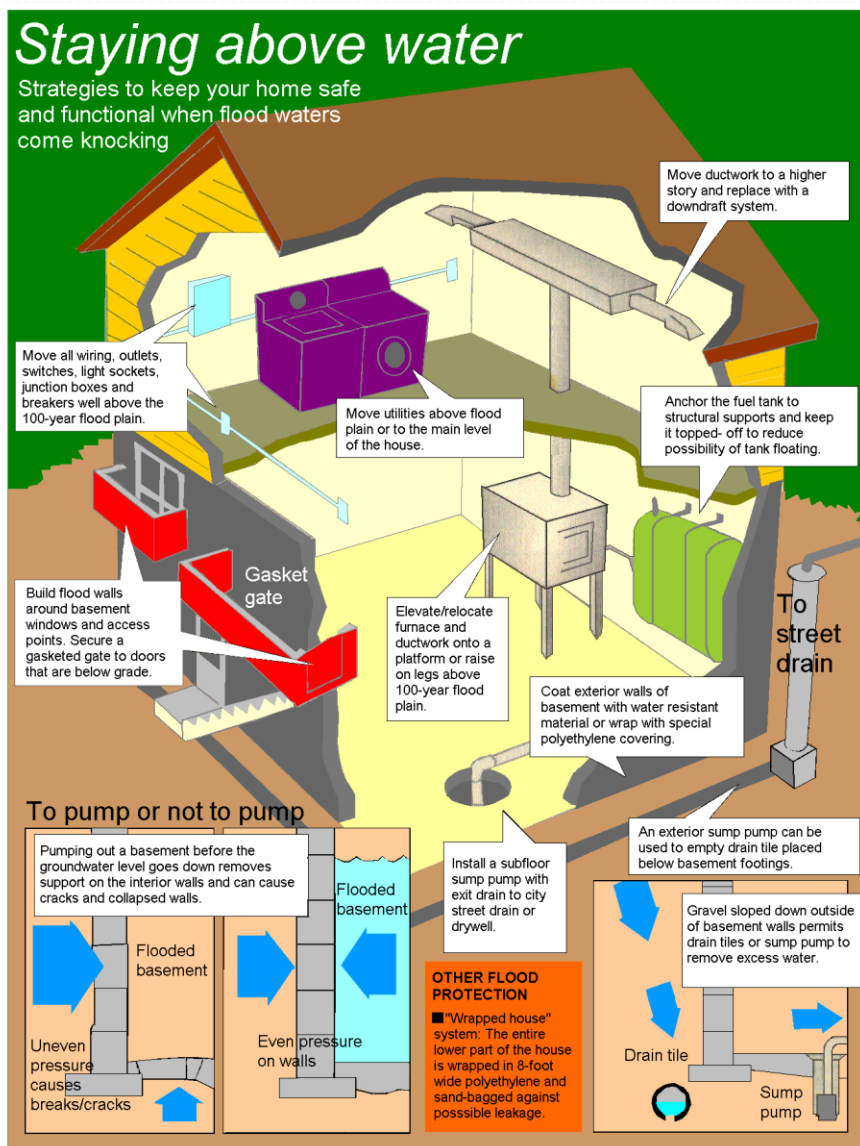
Additional Tips to Help Reduce Flooding



- Use permeable pavers in place of concrete or asphalt driveways
- Grow a green roof
- Report any blockages in creeks, channels, driveway culverts, cross drain culverts under the roadway, or inlets in the roadway to 615-862-4600 option 4



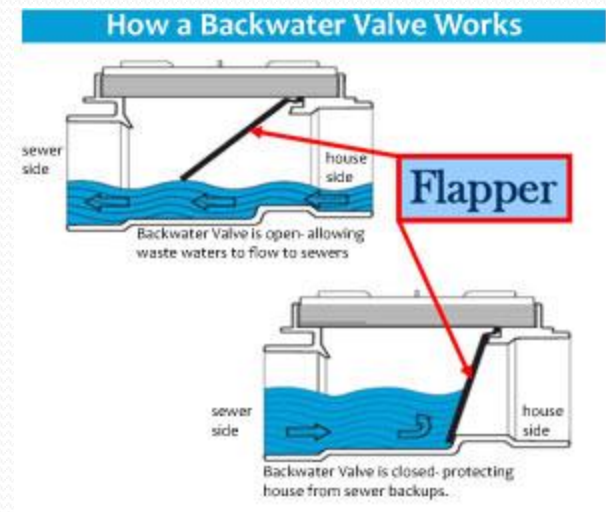
Protect Your Property



- Elevate your home
- Elevate and secure electrical appliances
- Place all low-lying electrical fixtures on separate electrical circuits
- Use flood-resistant materials on exterior surfaces
- Install a sump pump in the basement to drain water below the surface

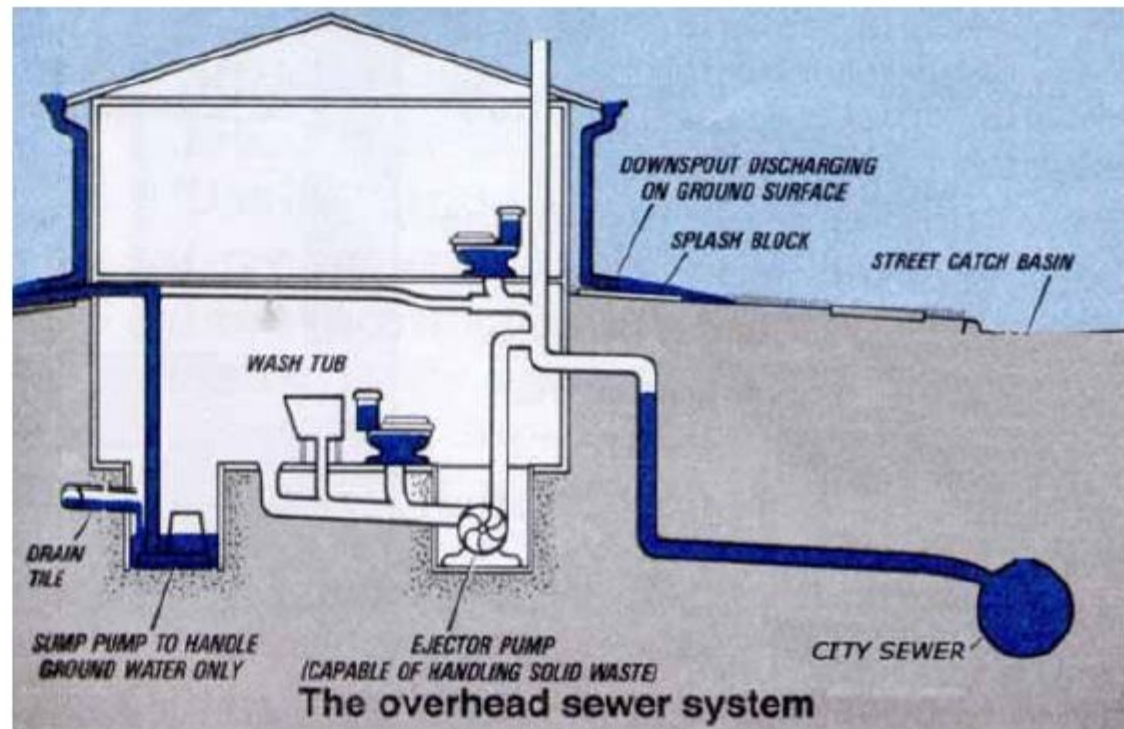
Protect Your Property

- Install a backwater check valve to the private sewer service line
 - Heavy rainstorms that fall over a short period of time (Flash Flood) can overwhelm any city sewer system.
 - Overloaded sewers can back-up through the private property sewer service lines and flow into a basement that is not protected.



Protect Your Property

Overhead sewers/
check valves are
an effective and
inexpensive
alternative to
prevent basement
backups in areas
with limited
overland flooding.

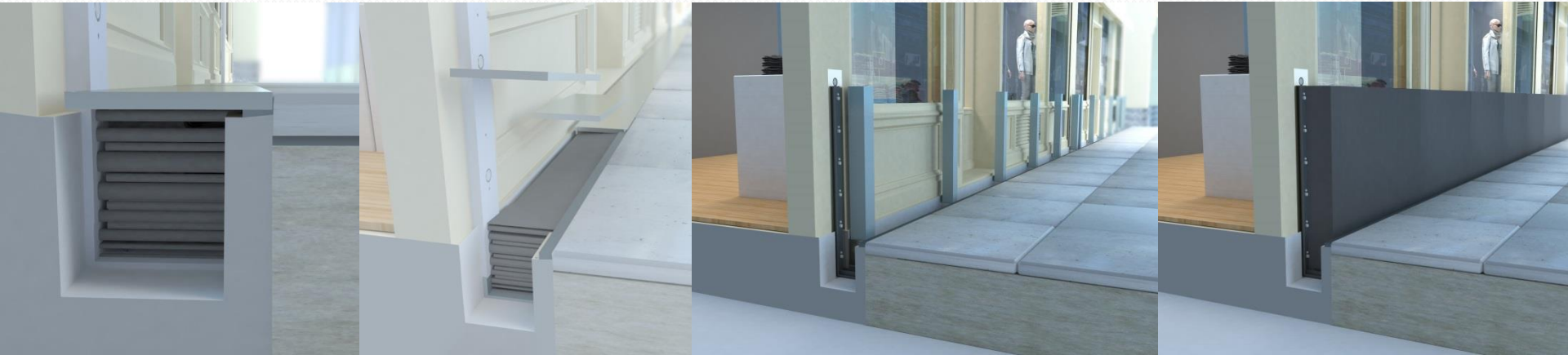


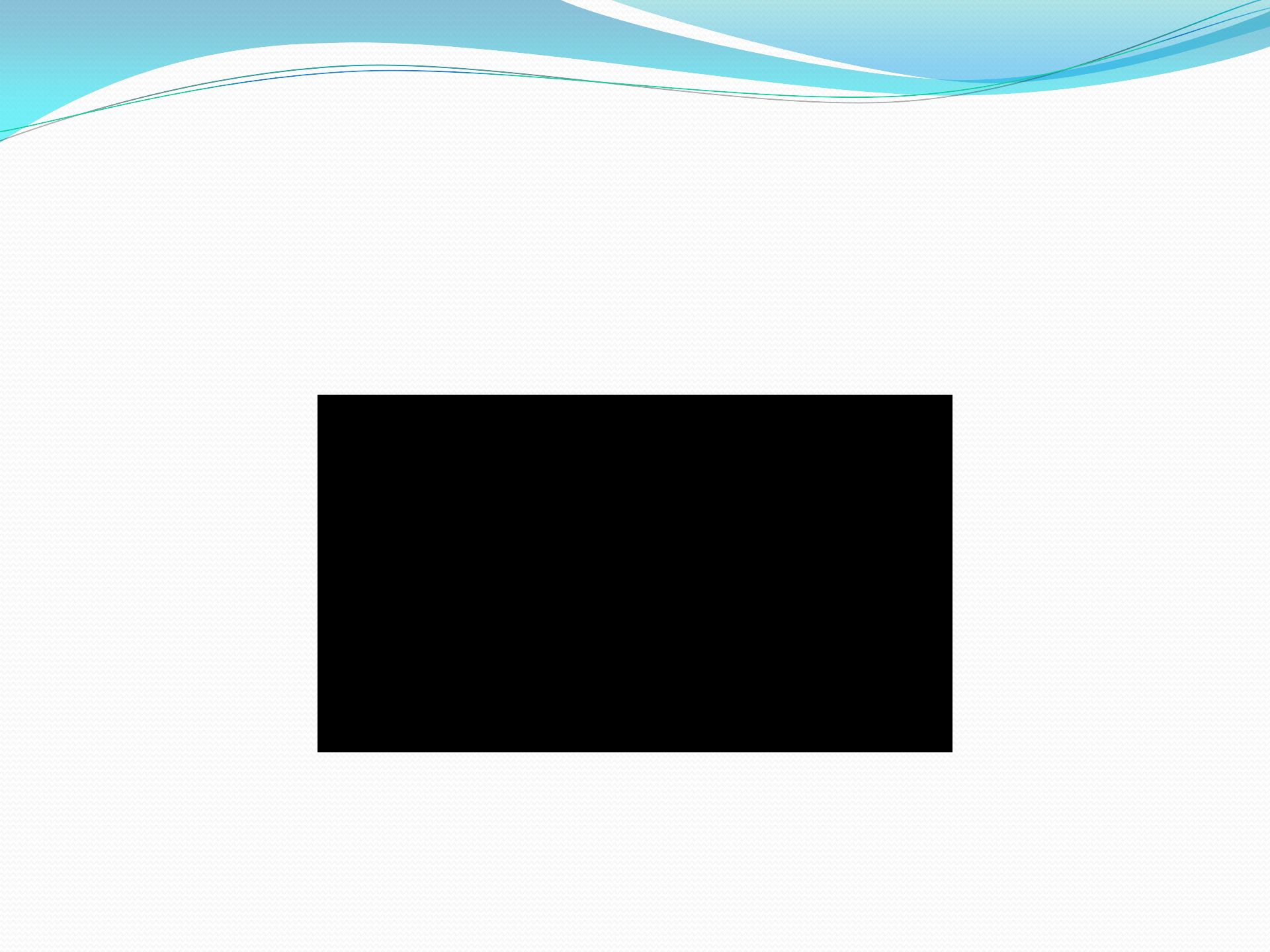
Protect Your Property

- Install a flood barrier to prevent water from entering areas such as doors, windows or crawl spaces in homes and garage's.



Protect Your Property





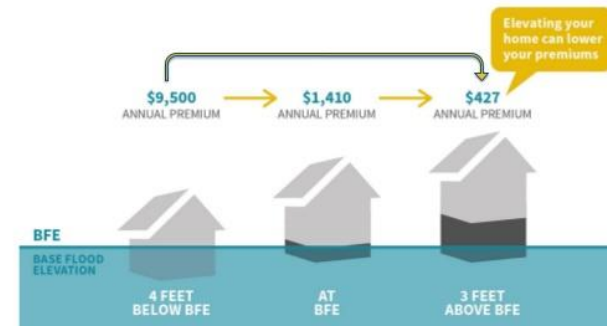
Protect Your Property

- Setup an audible flood warning system
- Protect Service Equipment
 - Involves elevating, relocating, or protecting service equipment (HVAC, electrical, utilities, fuel)
- Get flood insurance
 - Involves the purchase of flood insurance through your home insurance provider and/or the National Flood Insurance Program (NFIP).



National Flood Insurance Program Reform

Rates increase based on building height relative to expected flood height. Home elevation will reduce risk and premiums.



Rising Tides, Rising Costs, CNYCN

Summary

- Re-direct Downspouts
- Install a Rain Garden
- Install a Rain Barrel
- Plant Trees
- Use Permeable Pavers
- Grow a Green Roof
- Install a Sump Pump
- Install a Flood Barrier
- Install a Sewer Service Check Valve
- Protect Service Equipment
- Get Flood Insurance



Visit
www.FloodSmart.gov

Or
www.floodsafety.noaa.gov
for more information