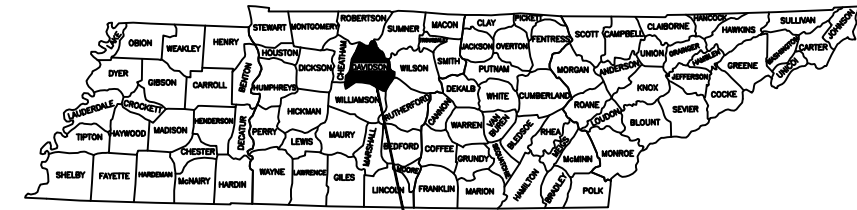


"ROUTE" ROADWAY / BIKE PLAN

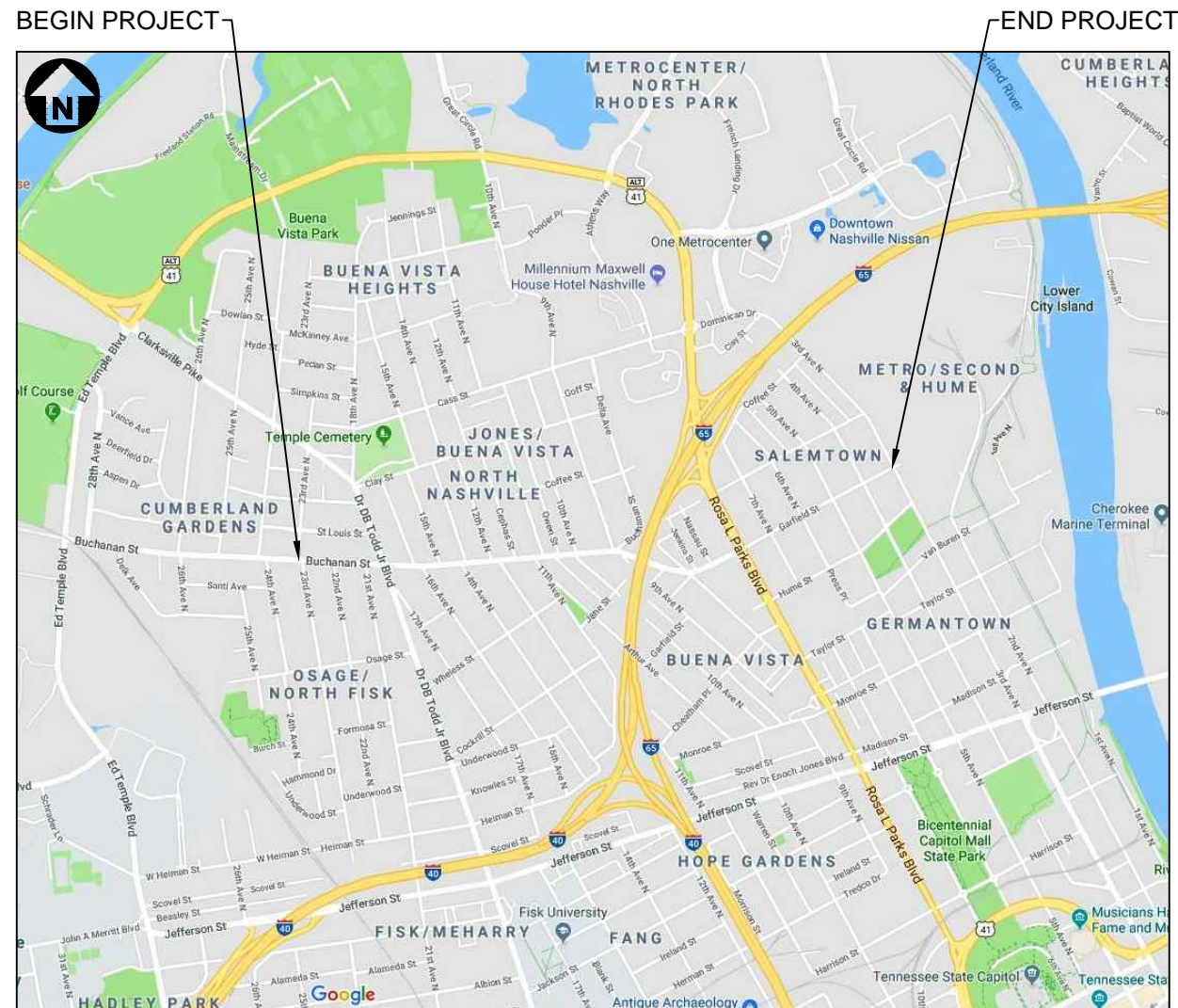
NASHVILLE, TN.
BUCHANAN STREET
FROM 23RD AVENUE NORTH TO
3RD AVENUE NORTH



PROJECT LOCATION
DAVIDSON COUNTY

INDEX OF SHEETS CONSTRUCTION

SHEET NO.	DESCRIPTION
1	TITLE SHEET
2	ESTIMATED QUANTITIES
2A	DETAIL SHEET
3-3X	PROPOSED PAVEMENT MARKING PLAN
4-4X	PROPOSED SIGN PLAN
5-5X	SIGN SCHEDULE



LOCATION MAP

NOT TO SCALE

TOTAL PROJECT LENGTH 1.43 MI.

BIKEWAY PROJECT
SHALL COORDINATE
WITH TRAFFIC DEPT

T.D.O.T. STANDARD DRAWINGS

SPECIAL NOTE

THIS PROJECT TO BE CONSTRUCTED UNDER THE STANDARD SPECIFICATIONS OF THE TENNESSEE DEPARTMENT OF TRANSPORTATION DATED: JANUARY 1, 2015 AND ADDITIONAL SPECIFICATIONS AND SPECIAL PROVISIONS CONTAINED IN THE PLANS AND THE PROPOSAL CONTRACT.

SPECIAL NOTE:
THE BASE SURVEY AND DESIGN INFORMATION FOR ROADWAY AND UTILITIES PRESENTED ON THIS PLAN WERE PROVIDED TO KCI TECHNOLOGIES, INC BY _____ WHERE AVAILABLE, BASE INFORMATION HAS BEEN SUPPLEMENTED BY PLANS OBTAINED FROM _____ AND FIELD OBSERVATIONS BY THE ENGINEER. KCI TECHNOLOGIES, INC MAKES NO CLAIMS AS TO THE COMPLETENESS OR ACCURACY OF THE PROVIDED BASE INFORMATION.

DESIGNED BY KCI TECHNOLOGIES, INC.
DESIGNER JONATHAN M. CLEGHON, PE
P.E. NO. N/A

FILE NO.	891704370.04
DATE:	8/XX/18
DESIGNED BY:	JEG
DRAWN BY:	DKC
CHECKED BY:	JMC

REVISION BLOCK

DATE:		



ALL CONSTRUCTION ACTIVITIES SHALL BE COMPLETED IN FULL COMPLIANCE WITH THE AMERICANS WITH DISABILITIES ACT (ADA) AND ARCHITECTURAL AND TRANSPORTATION BARRIERS COMPLIANCE BOARD, FEDERAL REGISTER 36 CFR PARTS 1190 AND 1191, ACCESSIBILITY GUIDELINES FOR BUILDINGS AND FACILITIES, ARCHITECTURAL BARRIERS ACT (ABA) ACCESSIBILITY GUIDELINES, PROPOSED RULE. PUBLISHED IN THE FEDERAL REGISTER ON JULY 23, 2004, AS HAS BEEN ADOPTED BY METRO.

ACCEPTED BY : _____

DATE : _____

METROPOLITAN GOVERNMENT
OF NASHVILLE & DAVIDSON COUNTY, TENNESSEE
PUBLIC WORKS DEPARTMENT
ENGINEERING DIVISION

ROADWAY / BIKE
PLAN

Title Sheet

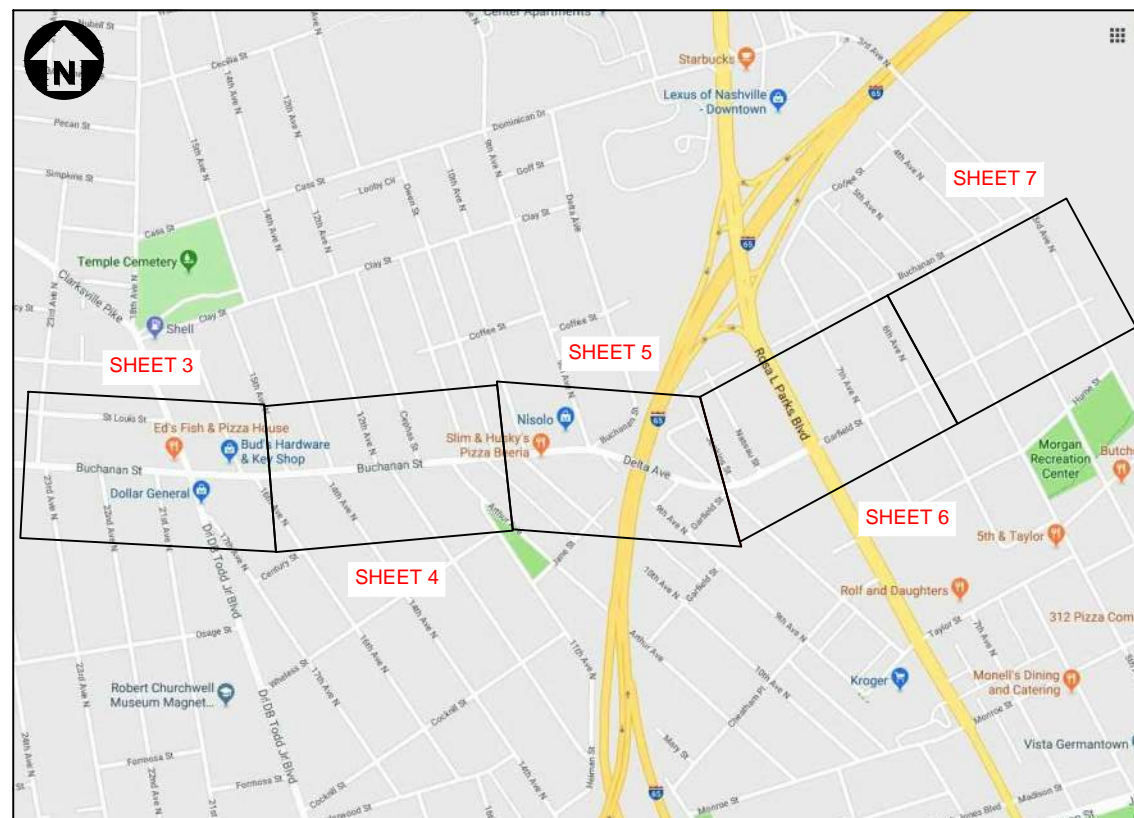
SCALE: N.T.S.

SHEET 1 OF X

LEGEND	
-----	2' x 4' DOTTED PAVEMENT MARKING LINE
-----	10' x 30' BROKEN PAVEMENT MARKING LINE
↩	TURN LANE ARROW
————	8" BIKE LANE STOP LINE
————	2' STOP LINE
▼▼▼▼	YIELD LINE PAVEMENT MARKING
////	CHANNELIZATION PAVEMENT MARKING
↩	BIKE LANE PAVEMENT MARKING SYMBOL
↩	SHARROW PAVEMENT MARKING SYMBOL
⊣	SIGN
⊙	EXISTING UTILITY POLE
⊙	EXISTING LIGHT POLE
⊙	EXISTING FIRE HYDRANT
⊞	BUS STOP

SHEET LOCATION KEY		
ROADWAY	LIMITS	MPH
XXXXXX	*XXXXXX TO XXXXX*	XXX
**SPECIAL NOTE(S): . ALL PAVEMENT MARKINGS AND SIGNAGE SHALL BE IN ACCORDANCE WITH THE CURRENT EDITION OF "MANUAL ON UNIFORM TRAFFIC CONTROL DEVICES" (M.U.T.C.D.) . CONTRACTOR IS RESPONSIBLE FOR INSTALLATION OF ROADWAY MARKINGS AND SIGNS. . BIKEWAY SIGNAGE SHALL BE PLACED PER DIRECTION OF FIELD ENGINEER. . SHARROW AND BIKE LANE PAVEMENT MARKING SHALL BE PLACED PER DIRECTION OF FIELD ENGINEER. . SHARROW AND BIKE LANE PAVEMENT MARKING SHALL NOT BE PLACED IN FRONT OF DRIVEWAYS. . BIKEWAY PROJECT SHALL COORDINATE WITH METRO TRAFFIC DEPARTMENT.		

SHEET LOCATION KEY

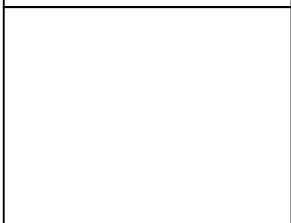
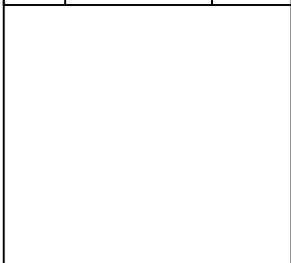


UPDATE PER PROJECT
PROJECT QUANTITY
SPREADSHEET

UPDATE PER
PROJECT
QUANTITY
FOOTNOTES

FILE NO.	15-0805
DATE:	XX/XX/XX
DESIGNED BY:	XXX
DRAWN BY:	XXX
CHECKED BY:	XXX

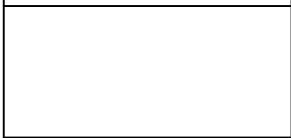
REVISION BLOCK	
DATE:	



ALL CONSTRUCTION ACTIVITIES SHALL BE COMPLETED IN FULL COMPLIANCE WITH THE AMERICANS WITH DISABILITIES ACT (ADA) AND ARCHITECTURAL AND TRANSPORTATION BARRIERS COMPLIANCE BOARD, FEDERAL REGISTER 36 CFR PARTS 1190 AND 1191, ACCESSIBILITY GUIDELINES FOR BUILDINGS AND FACILITIES, ARCHITECTURAL BARRIERS ACT (ABA) ACCESSIBILITY GUIDELINES, PROPOSED RULE, PUBLISHED IN THE FEDERAL REGISTER ON JULY 23, 2004, AS HAS BEEN ADOPTED BY METRO.



METROPOLITAN GOVERNMENT
OF NASHVILLE & DAVIDSON COUNTY, TENNESSEE
PUBLIC WORKS DEPARTMENT
ENGINEERING DIVISION



ROADWAY / BIKE
PLAN

Estimated Quantities

SCALE: N.T.S.

SHEET 2 OF X

FILE NO.	15-0805
DATE:	XX/XX/XX
DESIGNED BY:	XXX
DRAWN BY:	XXX
CHECKED BY:	XXX

REVISION BLOCK		
DATE:		



ALL CONSTRUCTION ACTIVITIES SHALL BE COMPLETED IN FULL COMPLIANCE WITH THE AMERICANS WITH DISABILITIES ACT (ADA) AND ARCHITECTURAL AND TRANSPORTATION BARRIERS COMPLIANCE BOARD, FEDERAL REGISTER 36 CFR PARTS 1190 AND 1191, ACCESSIBILITY GUIDELINES FOR BUILDINGS AND FACILITIES, ARCHITECTURAL BARRIERS ACT (ABA) ACCESSIBILITY GUIDELINES, PROPOSED RULE. PUBLISHED IN THE FEDERAL REGISTER ON JULY 23, 2004, AS HAS BEEN ADOPTED BY METRO.



METROPOLITAN GOVERNMENT
 OF NASHVILLE & DAVIDSON COUNTY, TENNESSEE
 PUBLIC WORKS DEPARTMENT
 ENGINEERING DIVISION

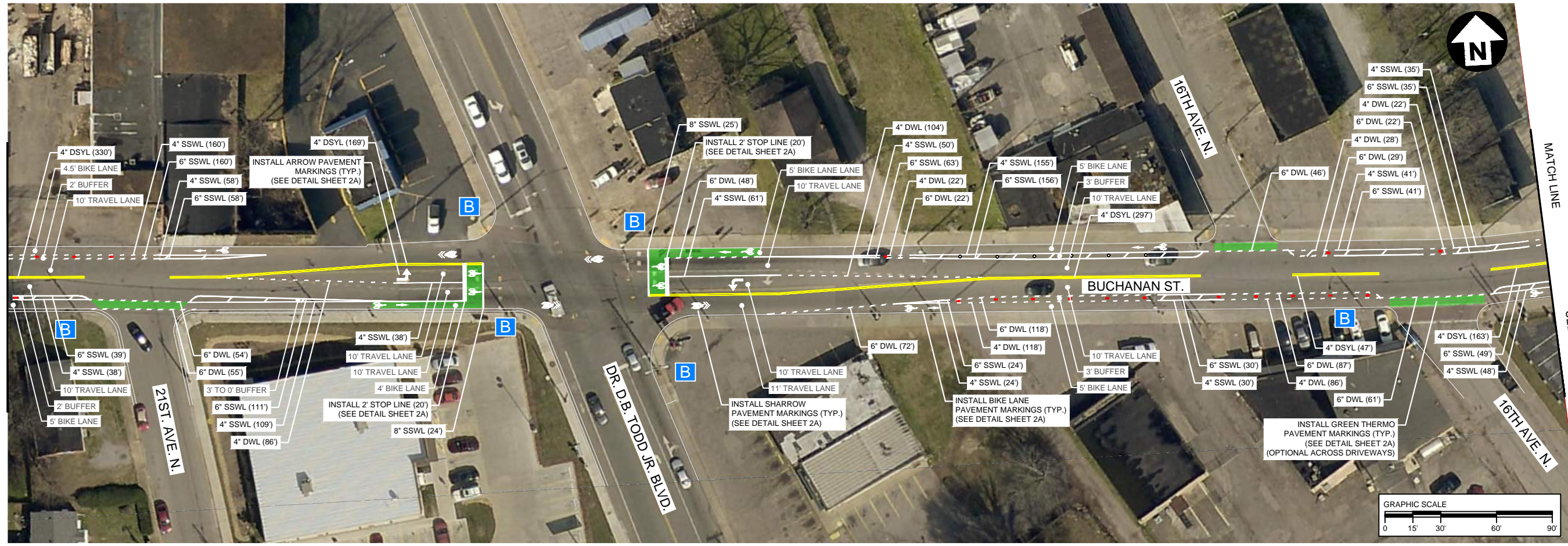
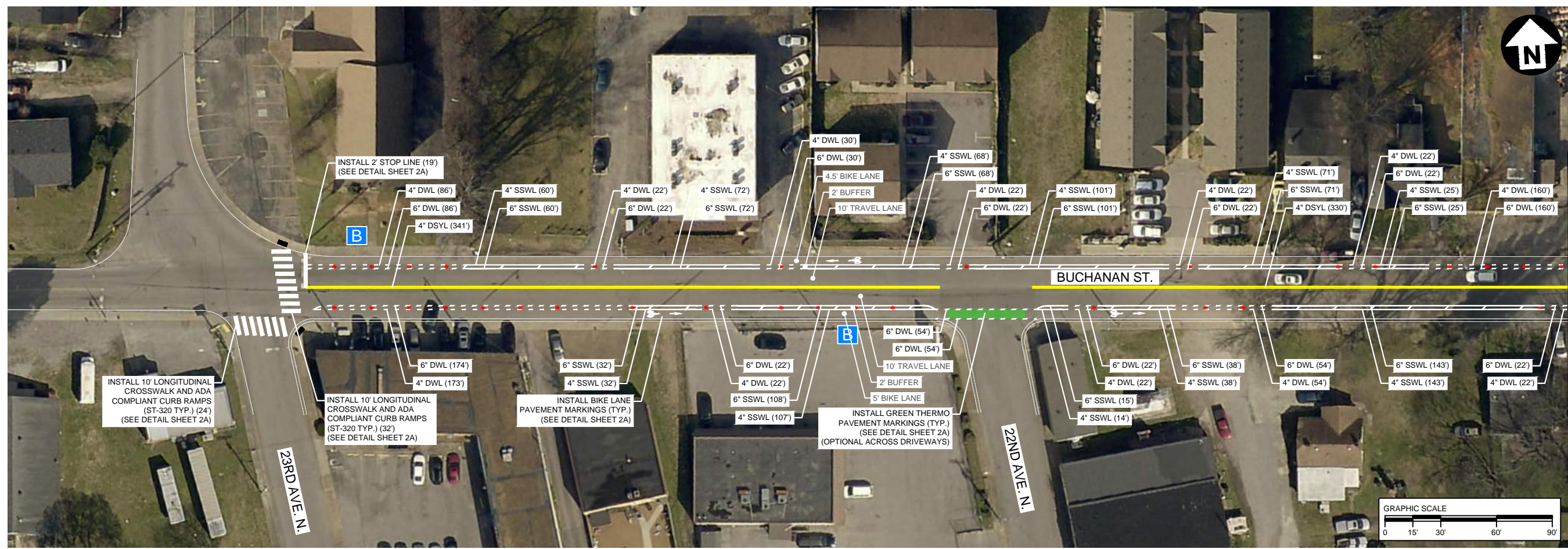


**ROADWAY / BIKE
 PLAN**

Detail Sheet

SCALE: N.T.S.

SHEET 2A OF X



FILE NO.	15-0805
DATE:	XX/XX/XX
DESIGNED BY:	XXX
DRAWN BY:	XXX
CHECKED BY:	XXX

REVISION BLOCK	
DATE:	

SEE THIS SHEET



MATCH LINE

ALL CONSTRUCTION ACTIVITIES SHALL BE COMPLETED IN FULL COMPLIANCE WITH THE AMERICANS WITH DISABILITIES ACT (ADA) AND ARCHITECTURAL AND TRANSPORTATION BARRIERS COMPLIANCE BOARD, FEDERAL REGISTER 36 CFR PARTS 1190 AND 1191, ACCESSIBILITY GUIDELINES FOR BUILDINGS AND FACILITIES, ARCHITECTURAL BARRIERS ACT (ABA) ACCESSIBILITY GUIDELINES, PROPOSED RULE. PUBLISHED IN THE FEDERAL REGISTER ON JULY 23, 2004, AS HAS BEEN ADOPTED BY METRO.

MATCH LINE

METROPOLITAN GOVERNMENT
OF NASHVILLE & DAVIDSON COUNTY, TENNESSEE
PUBLIC WORKS DEPARTMENT
ENGINEERING DIVISION

NOT FOR CONSTRUCTION

PROPOSED ROADWAY / BIKE PLAN

Proposed Pavement Marking Plan

SCALE: 1"=30'

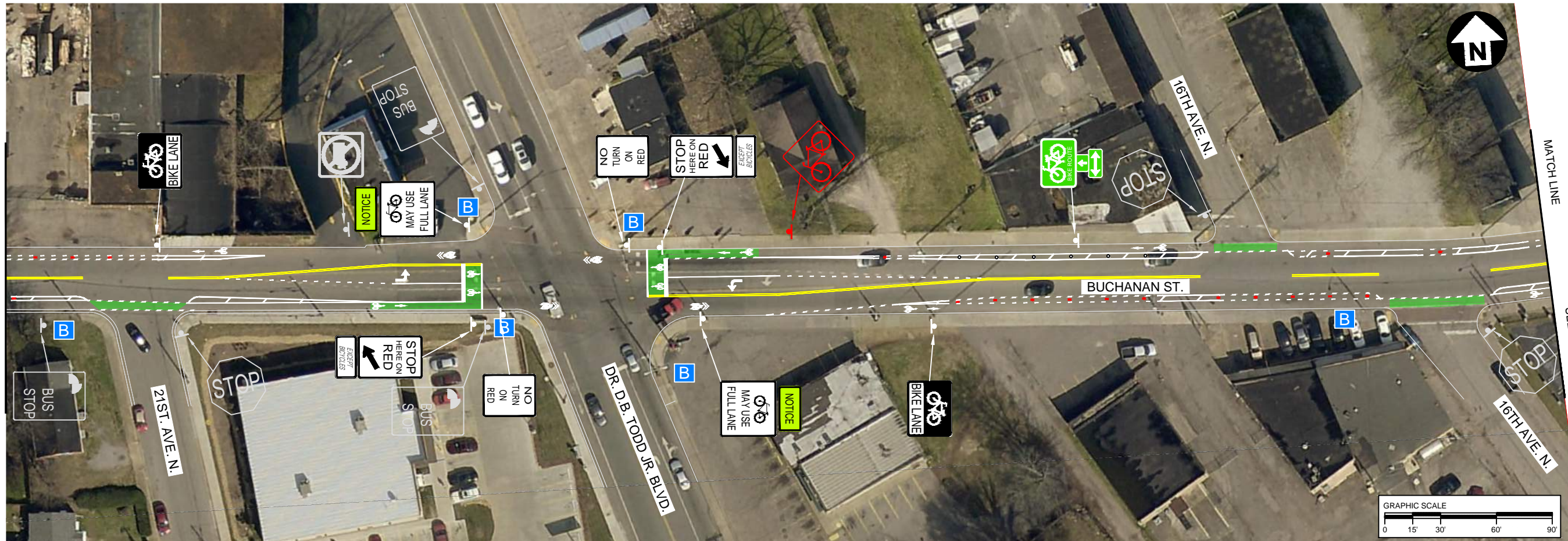
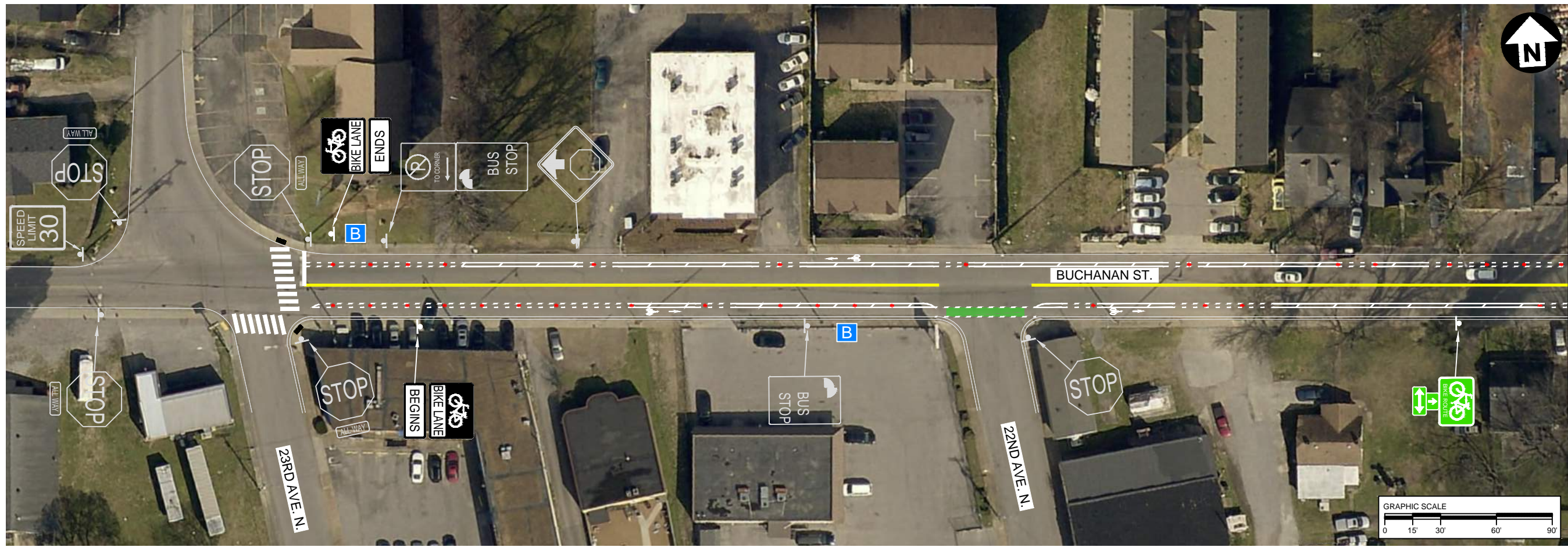
SHEET 3 OF X

SEE THIS SHEET

MATCH LINE

MATCH LINE

SEE SHEET 4



FILE NO.	15-0805
DATE:	XX/XX/XX
DESIGNED BY:	XXX
DRAWN BY:	XXX
CHECKED BY:	XXX

REVISION BLOCK	
DATE:	

SEE THIS SHEET



ALL CONSTRUCTION ACTIVITIES SHALL BE COMPLETED IN FULL COMPLIANCE WITH THE AMERICANS WITH DISABILITIES ACT (ADA) AND ARCHITECTURAL AND TRANSPORTATION BARRIERS COMPLIANCE BOARD, FEDERAL REGISTER 36 CFR PARTS 1190 AND 1191, ACCESSIBILITY GUIDELINES FOR BUILDINGS AND FACILITIES, ARCHITECTURAL BARRIERS ACT (ABA) ACCESSIBILITY GUIDELINES, PROPOSED RULE. PUBLISHED IN THE FEDERAL REGISTER ON JULY 23, 2004, AS HAS BEEN ADOPTED BY METRO.

MATCH LINE

METROPOLITAN GOVERNMENT
OF NASHVILLE & DAVIDSON COUNTY, TENNESSEE
PUBLIC WORKS DEPARTMENT
ENGINEERING DIVISION

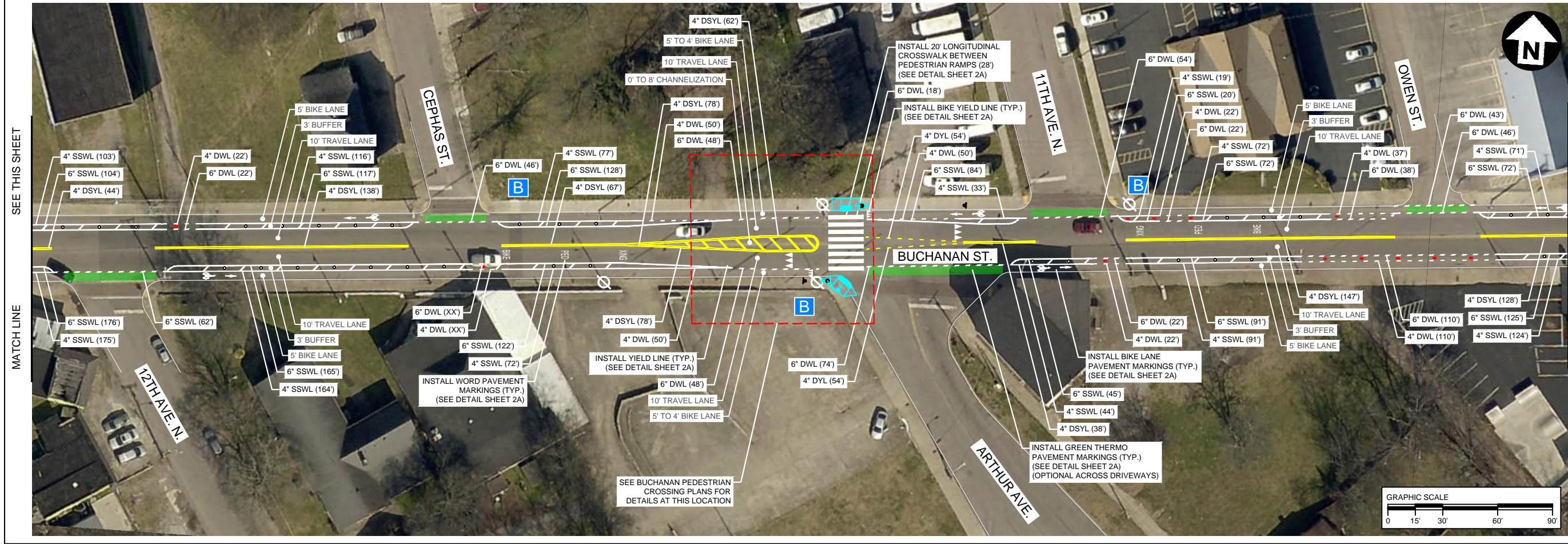
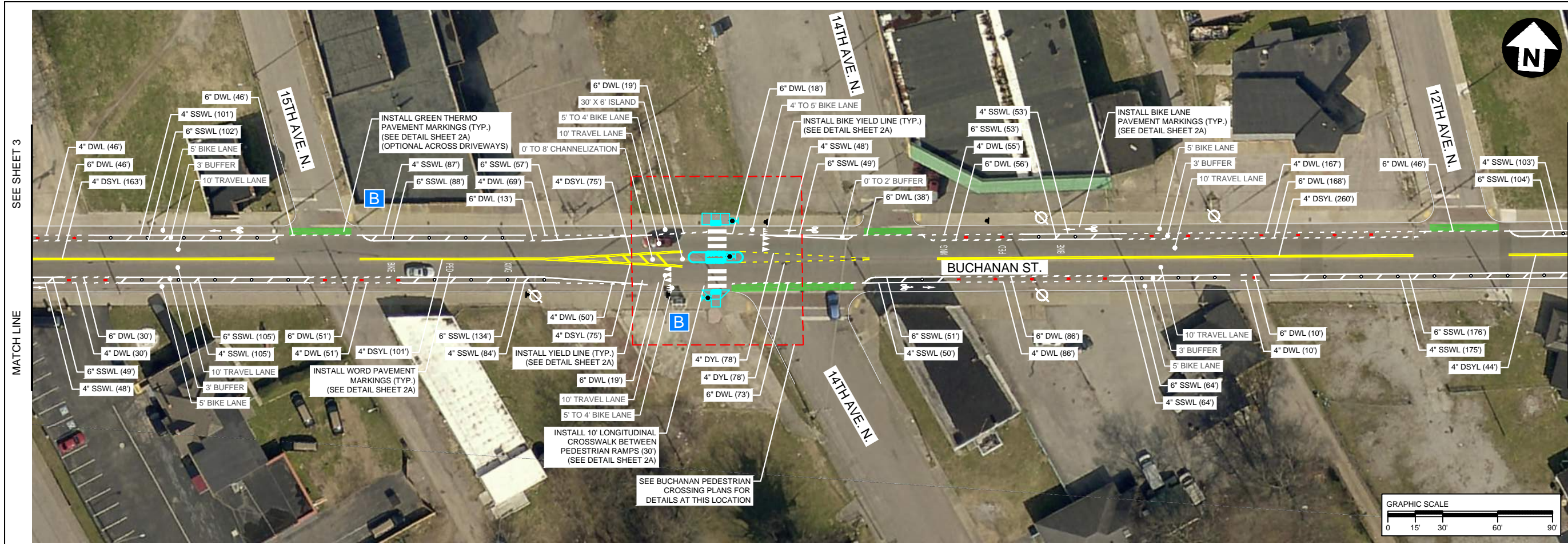
SEE SHEET 4A

PROPOSED ROADWAY / BIKE PLAN

Proposed Signing Plan

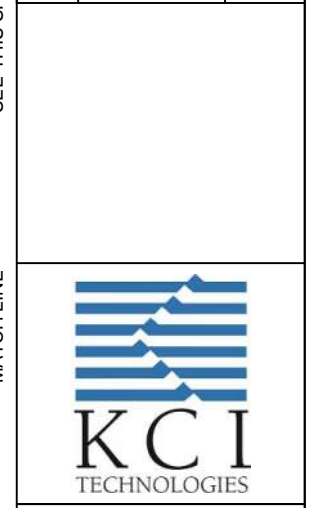
SCALE: 1"=30'

SHEET 3A OF X



FILE NO.	15-0805
DATE:	XX/XX/XX
DESIGNED BY:	XXX
DRAWN BY:	XXX
CHECKED BY:	XXX

REVISION BLOCK	
DATE:	



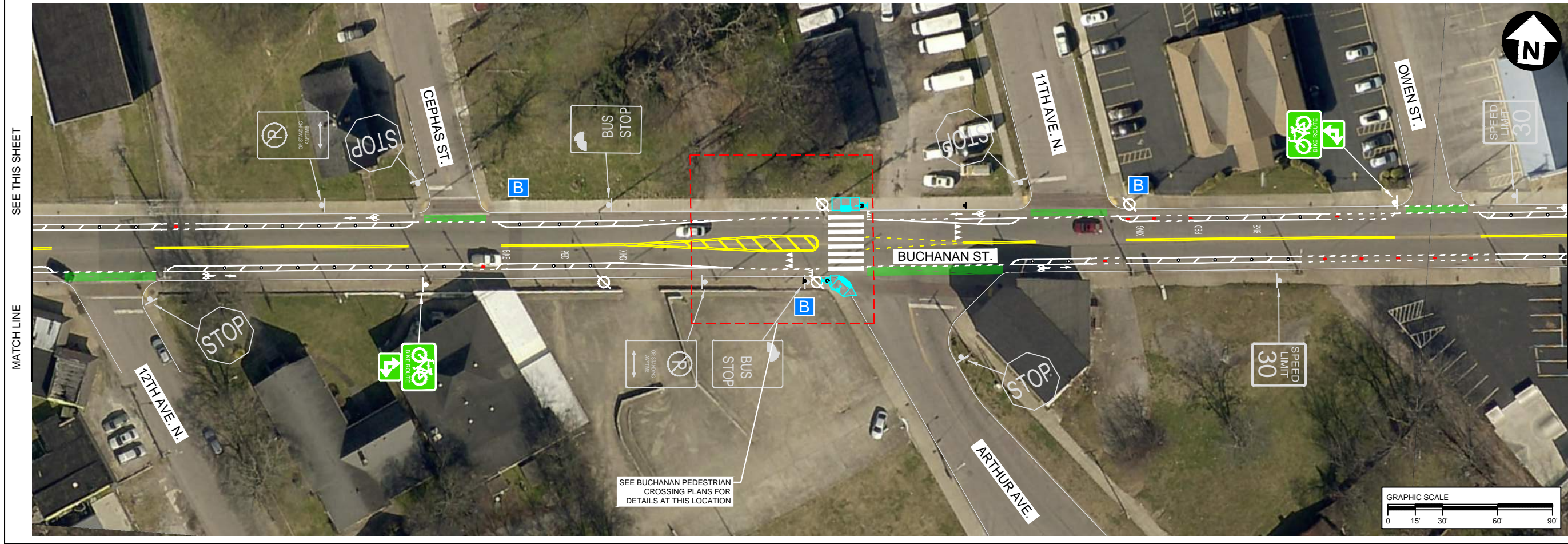
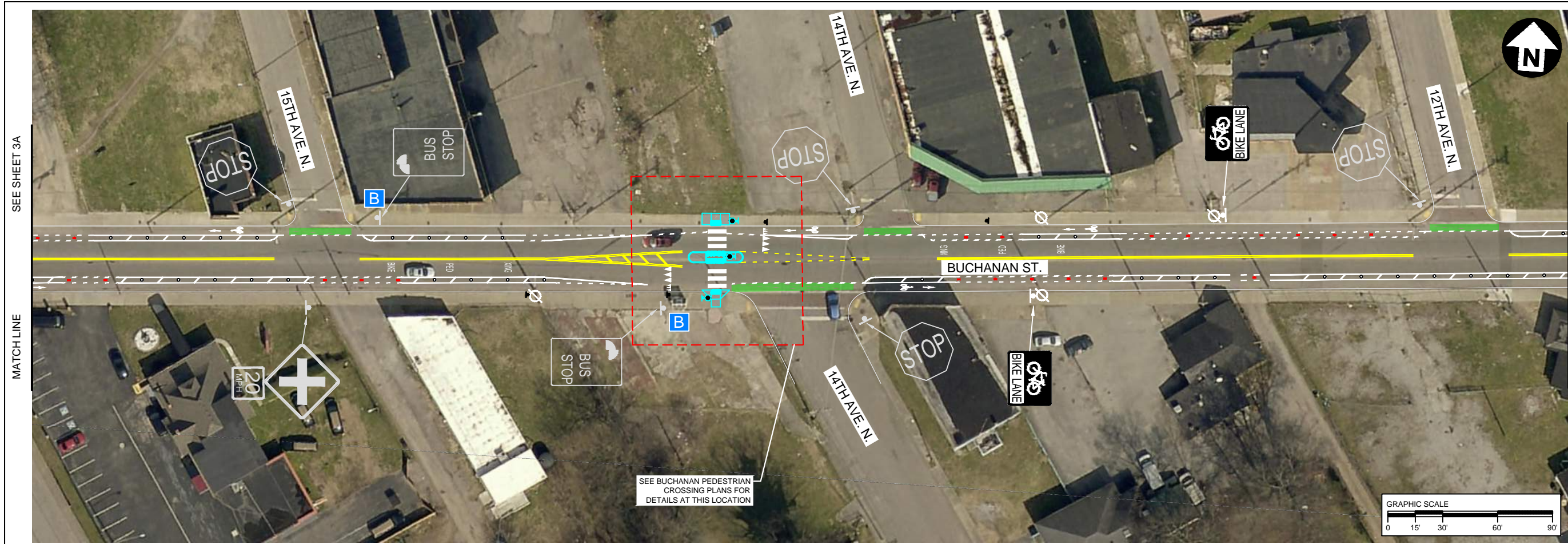
ALL CONSTRUCTION ACTIVITIES SHALL BE COMPLETED IN FULL COMPLIANCE WITH THE AMERICANS WITH DISABILITIES ACT (ADA) AND ARCHITECTURAL AND TRANSPORTATION BARRIERS COMPLIANCE BOARD, FEDERAL REGISTER 36 CFR PARTS 1190 AND 1191, ACCESSIBILITY GUIDELINES FOR BUILDINGS AND FACILITIES, ARCHITECTURAL BARRIERS ACT (ABA) ACCESSIBILITY GUIDELINES, PROPOSED RULE. PUBLISHED IN THE FEDERAL REGISTER ON JULY 23, 2004, AS HAS BEEN ADOPTED BY METRO.

METROPOLITAN GOVERNMENT
 OF NASHVILLE & DAVIDSON COUNTY, TENNESSEE
 PUBLIC WORKS DEPARTMENT
 ENGINEERING DIVISION

NOT FOR CONSTRUCTION

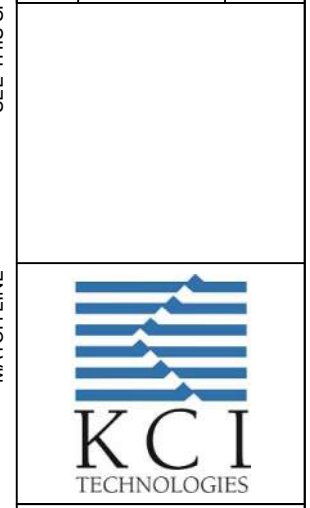
PROPOSED ROADWAY / BIKE PLAN
 Proposed Pavement Marking Plan

SCALE: 1"=30'
 SHEET 4 OF X



FILE NO.	15-0805
DATE:	XX/XX/XX
DESIGNED BY:	XXX
DRAWN BY:	XXX
CHECKED BY:	XXX

REVISION BLOCK	
DATE:	

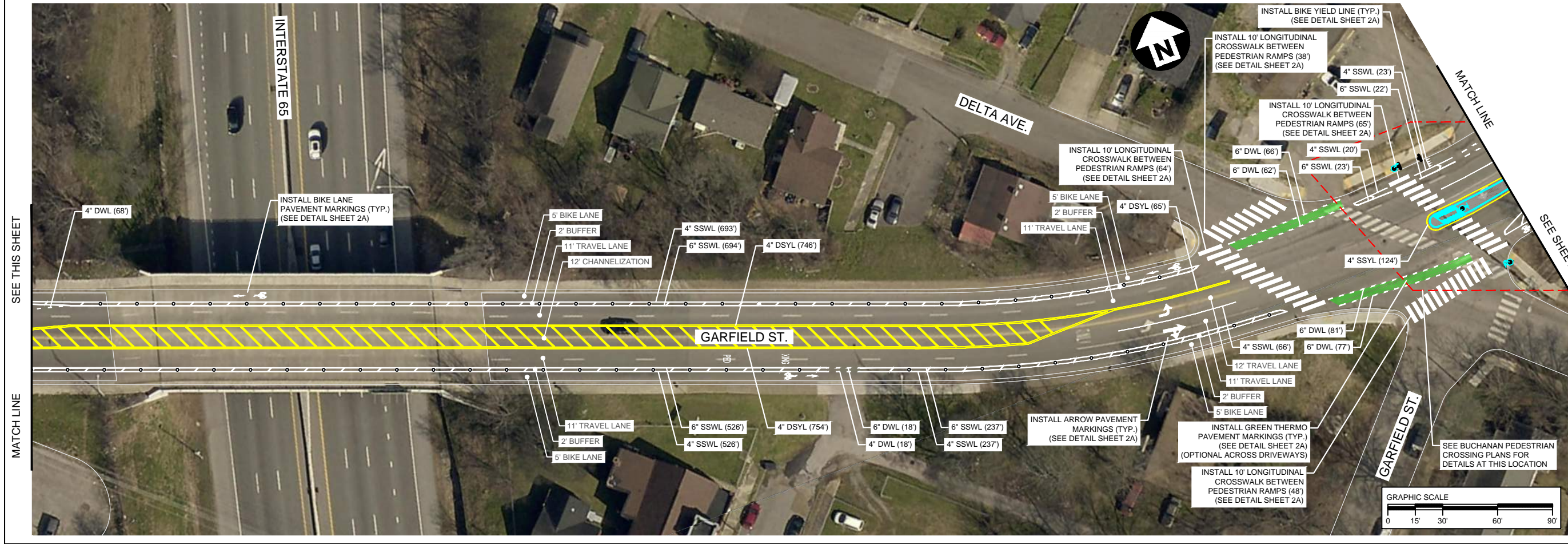
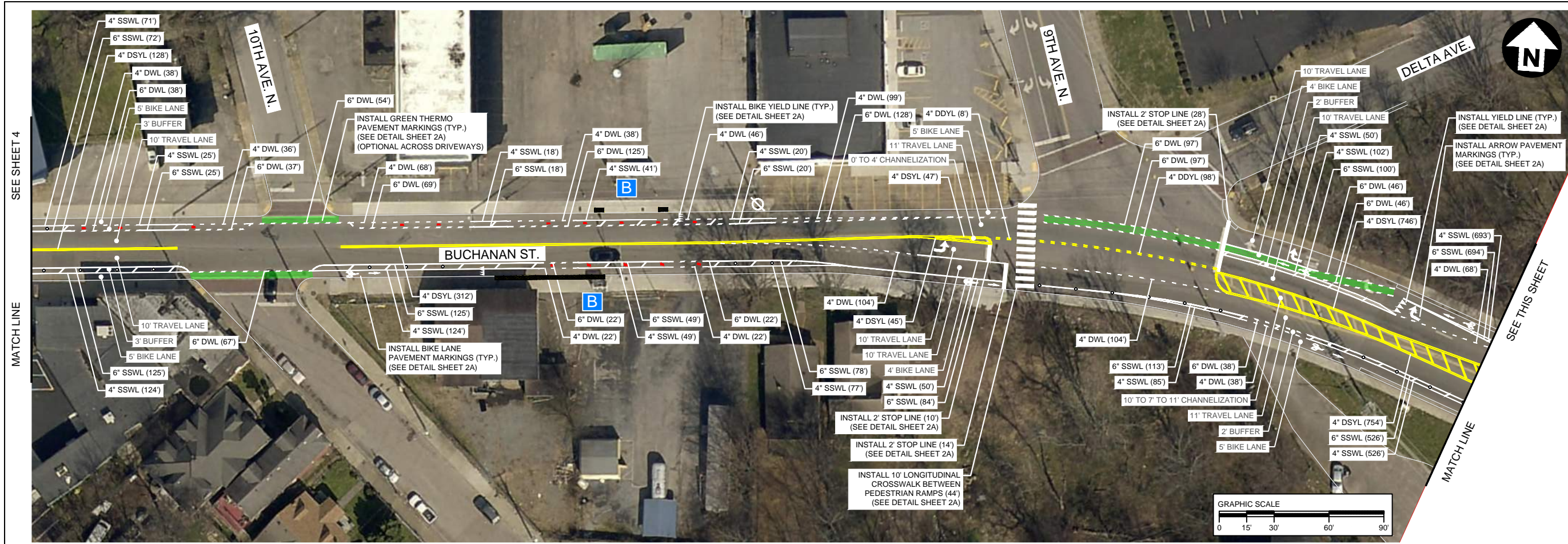


ALL CONSTRUCTION ACTIVITIES SHALL BE COMPLETED IN FULL COMPLIANCE WITH THE AMERICANS WITH DISABILITIES ACT (ADA) AND ARCHITECTURAL AND TRANSPORTATION BARRIERS COMPLIANCE BOARD, FEDERAL REGISTER 36 CFR PARTS 1190 AND 1191, ACCESSIBILITY GUIDELINES FOR BUILDINGS AND FACILITIES, ARCHITECTURAL BARRIERS ACT (ABA) ACCESSIBILITY GUIDELINES, PROPOSED RULE. PUBLISHED IN THE FEDERAL REGISTER ON JULY 23, 2004, AS HAS BEEN ADOPTED BY METRO.

METROPOLITAN GOVERNMENT
OF NASHVILLE & DAVIDSON COUNTY, TENNESSEE
PUBLIC WORKS DEPARTMENT
ENGINEERING DIVISION

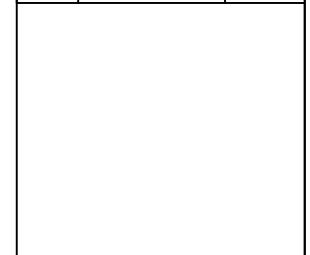
PROPOSED ROADWAY / BIKE PLAN

Proposed Signing Plan
SCALE: 1"=30'
SHEET 4A OF X



FILE NO.	15-0805
DATE:	XX/XX/XX
DESIGNED BY:	XXX
DRAWN BY:	XXX
CHECKED BY:	XXX

REVISION BLOCK	
DATE:	



ALL CONSTRUCTION ACTIVITIES SHALL BE COMPLETED IN FULL COMPLIANCE WITH THE AMERICANS WITH DISABILITIES ACT (ADA) AND ARCHITECTURAL AND TRANSPORTATION BARRIERS COMPLIANCE BOARD, FEDERAL REGISTER 36 CFR PARTS 1190 AND 1191, ACCESSIBILITY GUIDELINES FOR BUILDINGS AND FACILITIES, ARCHITECTURAL BARRIERS ACT (ABA) ACCESSIBILITY GUIDELINES, PROPOSED RULE. PUBLISHED IN THE FEDERAL REGISTER ON JULY 23, 2004, AS HAS BEEN ADOPTED BY METRO.

METROPOLITAN GOVERNMENT
OF NASHVILLE & DAVIDSON COUNTY, TENNESSEE
PUBLIC WORKS DEPARTMENT
ENGINEERING DIVISION

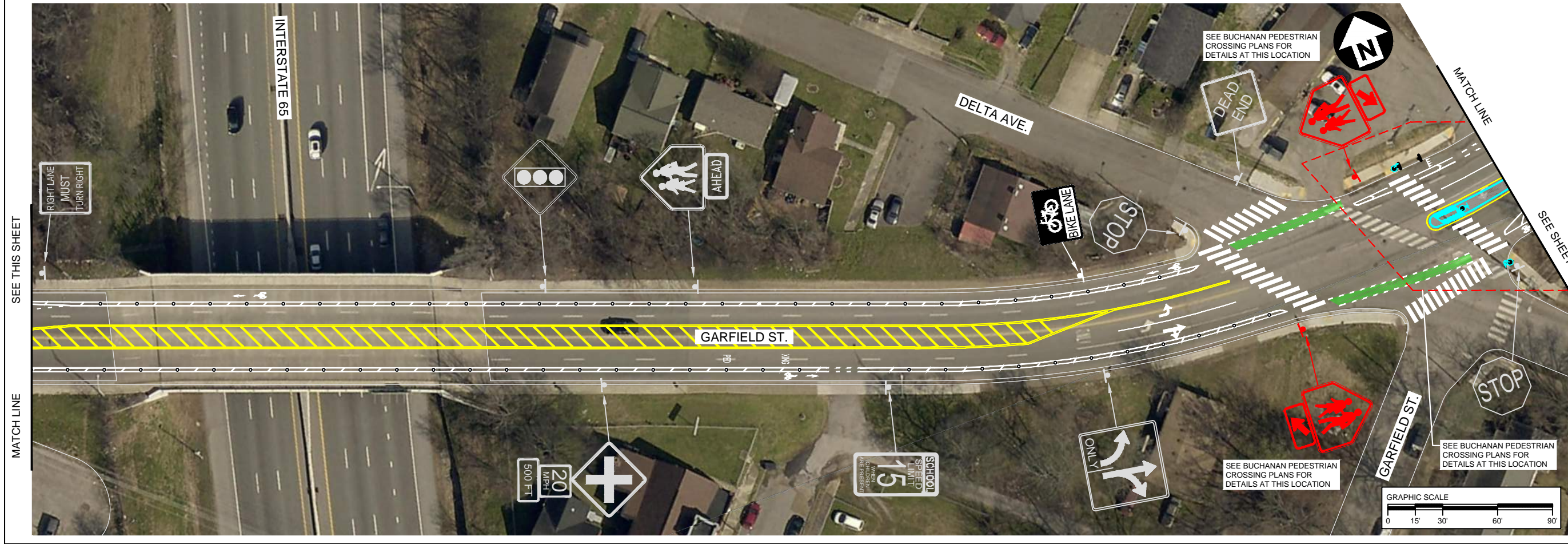
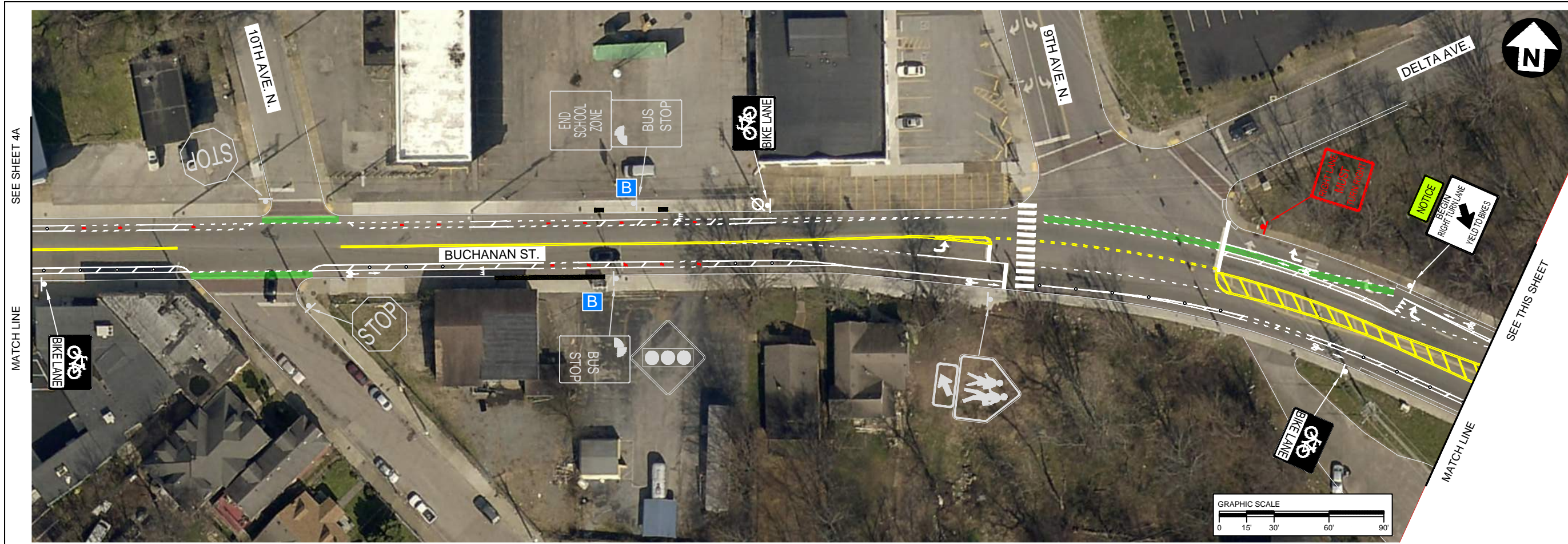
NOT FOR CONSTRUCTION

PROPOSED ROADWAY / BIKE PLAN

Proposed Pavement Marking Plan

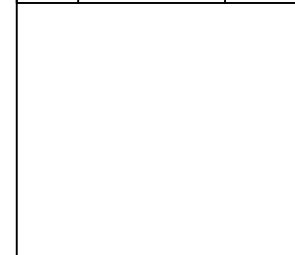
SCALE: 1"=30'

SHEET 5 OF X



FILE NO.	15-0805
DATE:	XX/XX/XX
DESIGNED BY:	XXX
DRAWN BY:	XXX
CHECKED BY:	XXX

REVISION BLOCK	
DATE:	



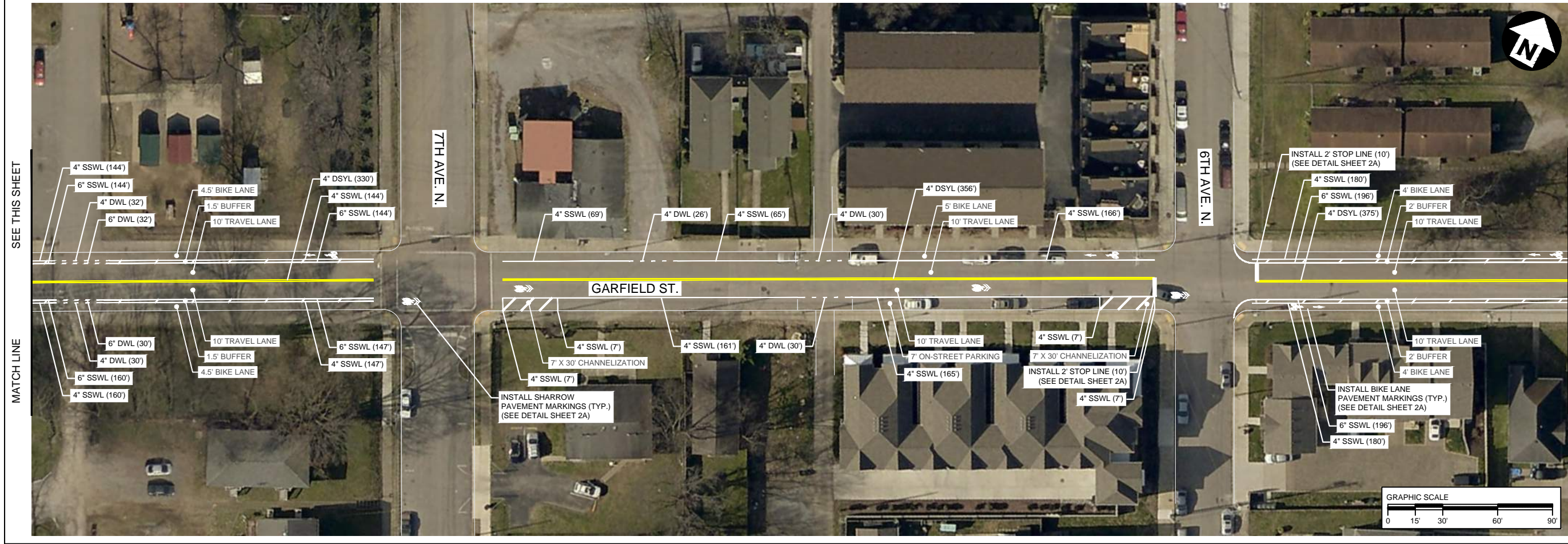
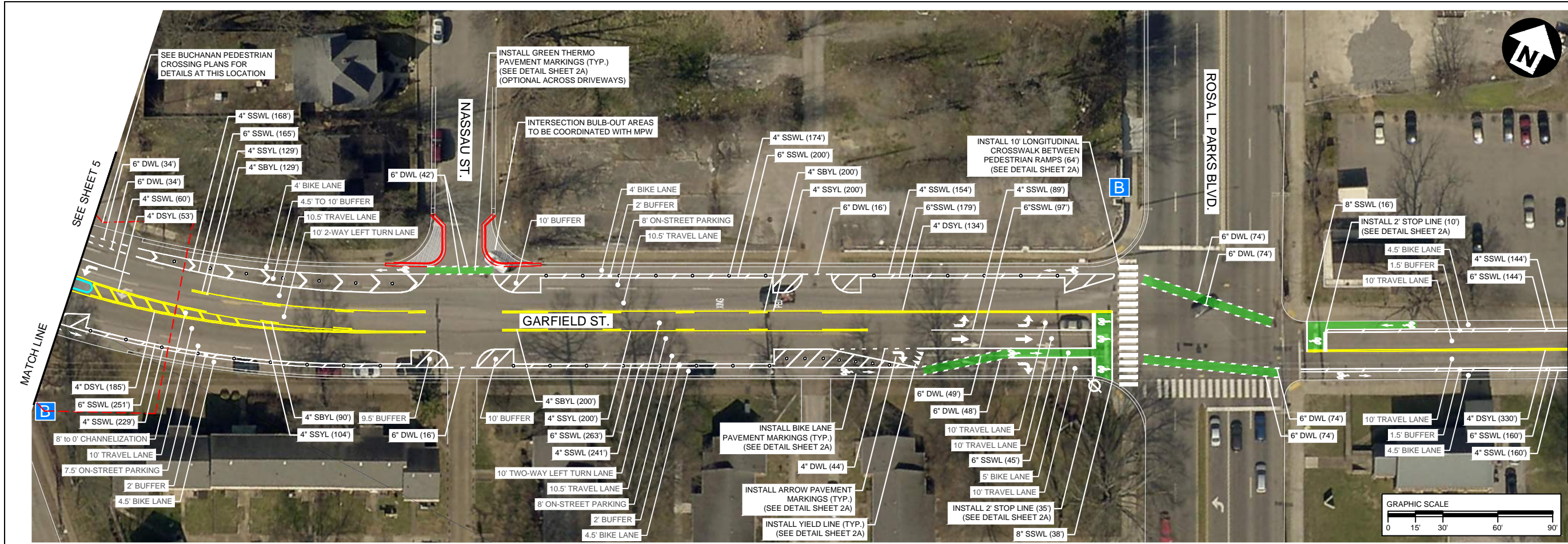
ALL CONSTRUCTION ACTIVITIES SHALL BE COMPLETED IN FULL COMPLIANCE WITH THE AMERICANS WITH DISABILITIES ACT (ADA) AND ARCHITECTURAL AND TRANSPORTATION BARRIERS COMPLIANCE BOARD, FEDERAL REGISTER 36 CFR PARTS 1190 AND 1191, ACCESSIBILITY GUIDELINES FOR BUILDINGS AND FACILITIES, ARCHITECTURAL BARRIERS ACT (ABA) ACCESSIBILITY GUIDELINES, PROPOSED RULE. PUBLISHED IN THE FEDERAL REGISTER ON JULY 23, 2004, AS HAS BEEN ADOPTED BY METRO.

METROPOLITAN GOVERNMENT
 OF NASHVILLE & DAVIDSON COUNTY, TENNESSEE
 PUBLIC WORKS DEPARTMENT
 ENGINEERING DIVISION

PROPOSED ROADWAY / BIKE PLAN

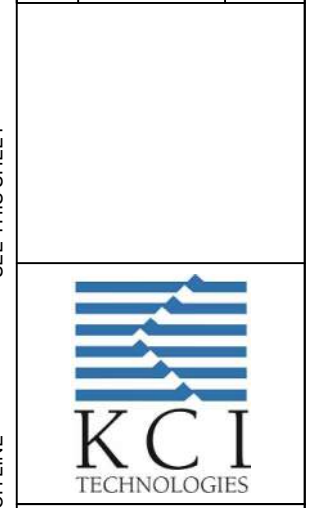
Proposed Signing Plan

SCALE: 1"=30'
 SHEET 5A OF X



FILE NO.	15-0805
DATE:	XX/XX/XX
DESIGNED BY:	XXX
DRAWN BY:	XXX
CHECKED BY:	XXX

REVISION BLOCK	
DATE:	

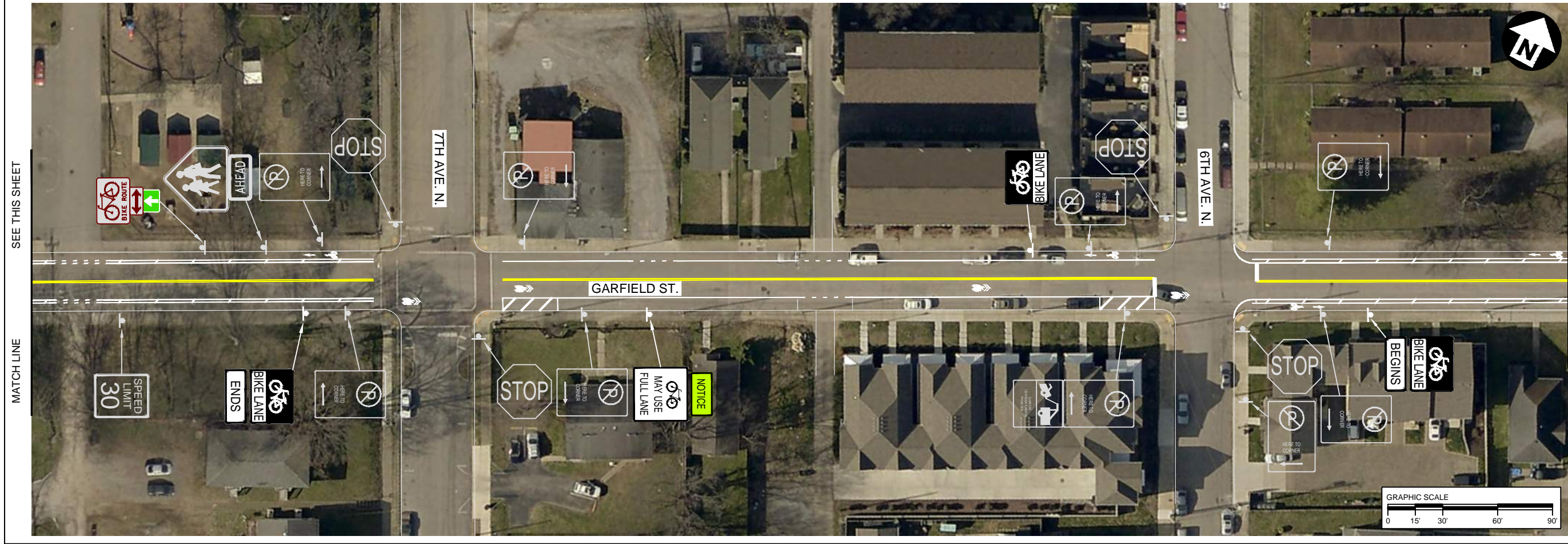
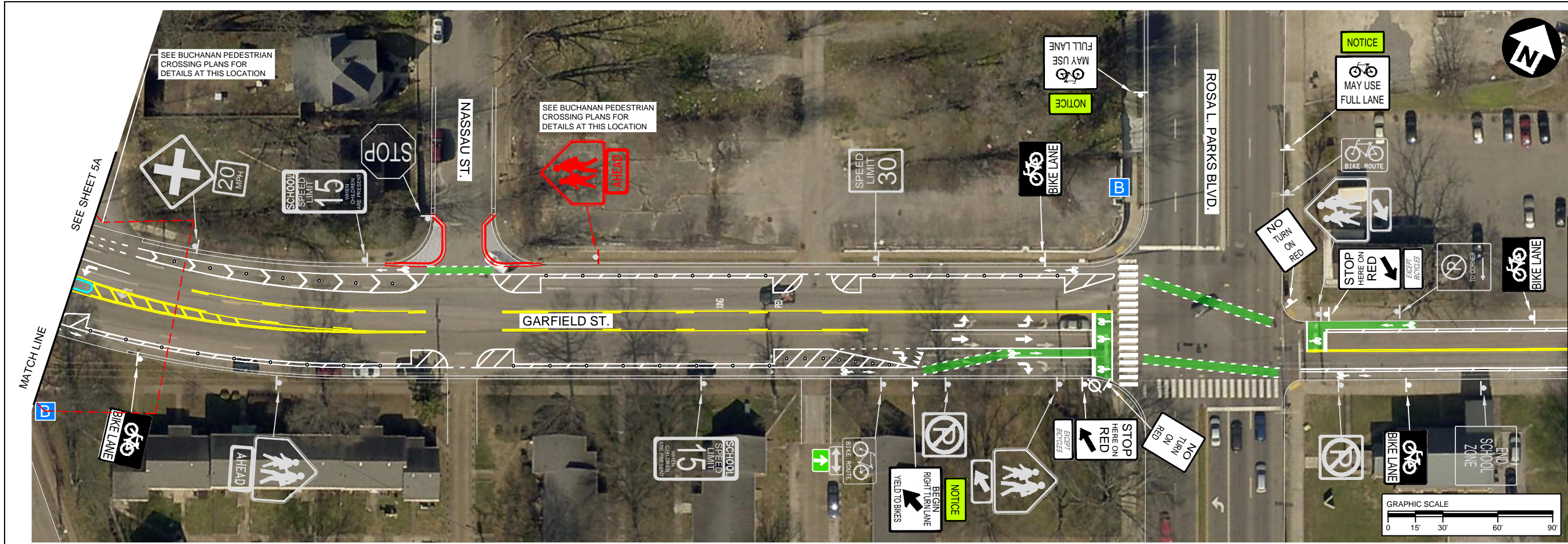


ALL CONSTRUCTION ACTIVITIES SHALL BE COMPLETED IN FULL COMPLIANCE WITH THE AMERICANS WITH DISABILITIES ACT (ADA) AND ARCHITECTURAL AND TRANSPORTATION BARRIERS COMPLIANCE BOARD, FEDERAL REGISTER 36 CFR PARTS 1190 AND 1191, ACCESSIBILITY GUIDELINES FOR BUILDINGS AND FACILITIES, ARCHITECTURAL BARRIERS ACT (ABA) ACCESSIBILITY GUIDELINES, PROPOSED RULE, PUBLISHED IN THE FEDERAL REGISTER ON JULY 23, 2004, AS HAS BEEN ADOPTED BY METRO.

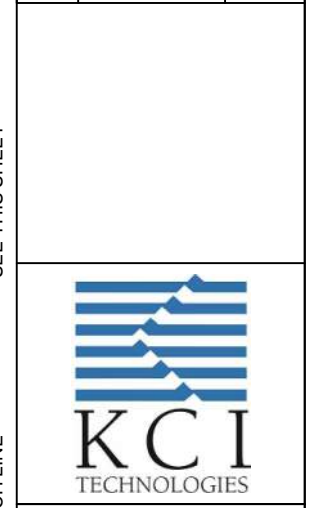
METROPOLITAN GOVERNMENT
OF NASHVILLE & DAVIDSON COUNTY, TENNESSEE
PUBLIC WORKS DEPARTMENT
ENGINEERING DIVISION

NOT FOR CONSTRUCTION
PROPOSED ROADWAY / BIKE PLAN

Proposed Pavement Marking Plan
SCALE: 1"=30'
SHEET 6 OF X



FILE NO.	15-0805
DATE:	XX/XX/XX
DESIGNED BY:	XXX
DRAWN BY:	XXX
CHECKED BY:	XXX
REVISION BLOCK	
DATE:	

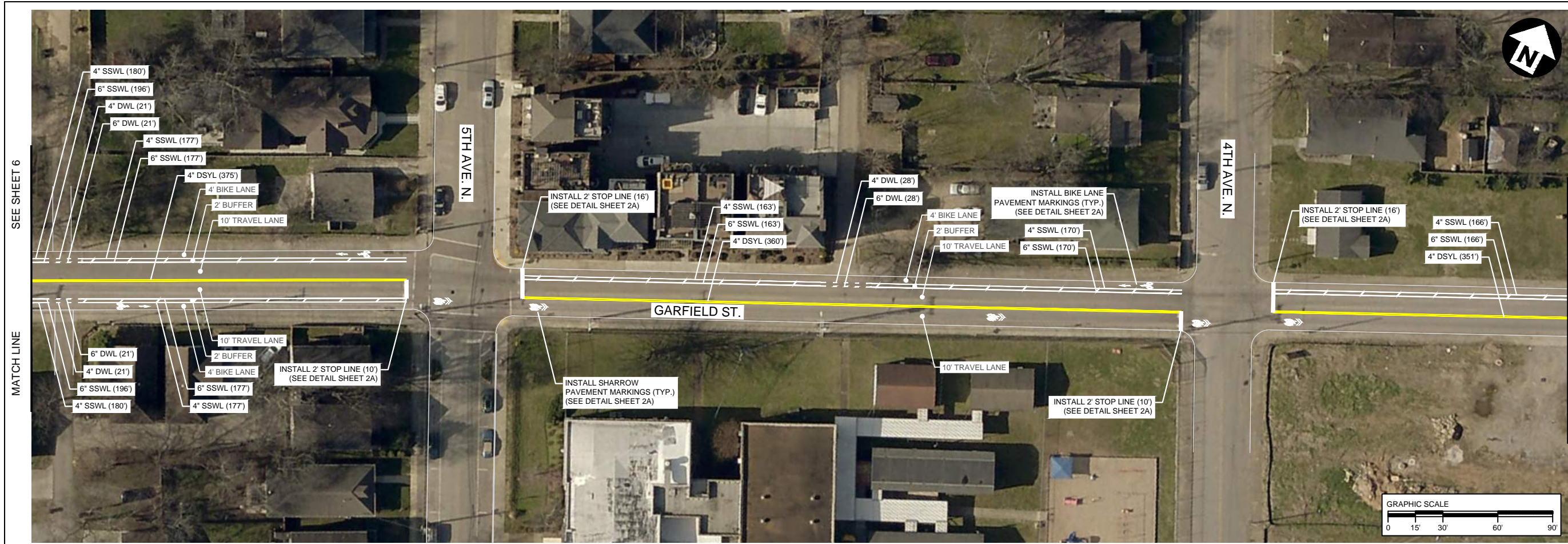


ALL CONSTRUCTION ACTIVITIES SHALL BE COMPLETED IN FULL COMPLIANCE WITH THE AMERICANS WITH DISABILITIES ACT (ADA) AND ARCHITECTURAL AND TRANSPORTATION BARRIERS COMPLIANCE BOARD, FEDERAL REGISTER 36 CFR PARTS 1190 AND 1191, ACCESSIBILITY GUIDELINES FOR BUILDINGS AND FACILITIES, ARCHITECTURAL BARRIERS ACT (ABA) ACCESSIBILITY GUIDELINES, PROPOSED RULE. PUBLISHED IN THE FEDERAL REGISTER ON JULY 23, 2004, AS HAS BEEN ADOPTED BY METRO.

METROPOLITAN GOVERNMENT
OF NASHVILLE & DAVIDSON COUNTY, TENNESSEE
PUBLIC WORKS DEPARTMENT
ENGINEERING DIVISION

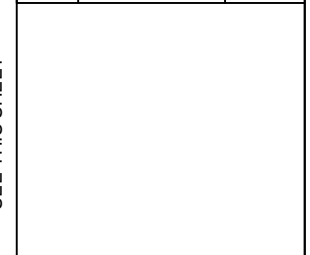
PROPOSED ROADWAY / BIKE PLAN

Proposed Signing Plan
SCALE: 1"=30'
SHEET 6A OF X



FILE NO.	15-0805
DATE:	XX/XX/XX
DESIGNED BY:	XXX
DRAWN BY:	XXX
CHECKED BY:	XXX

REVISION BLOCK	
DATE:	



<p>ALL CONSTRUCTION ACTIVITIES SHALL BE COMPLETED IN FULL COMPLIANCE WITH THE AMERICANS WITH DISABILITIES ACT (ADA) AND ARCHITECTURAL AND TRANSPORTATION BARRIERS COMPLIANCE BOARD, FEDERAL REGISTER 36 CFR PARTS 1190 AND 1191, ACCESSIBILITY GUIDELINES FOR BUILDINGS AND FACILITIES, ARCHITECTURAL BARRIERS ACT (ABA) ACCESSIBILITY GUIDELINES, PROPOSED RULE. PUBLISHED IN THE FEDERAL REGISTER ON JULY 23, 2004, AS HAS BEEN ADOPTED BY METRO.</p>	
---	--

METROPOLITAN GOVERNMENT
 OF NASHVILLE & DAVIDSON COUNTY, TENNESSEE
 PUBLIC WORKS DEPARTMENT
 ENGINEERING DIVISION

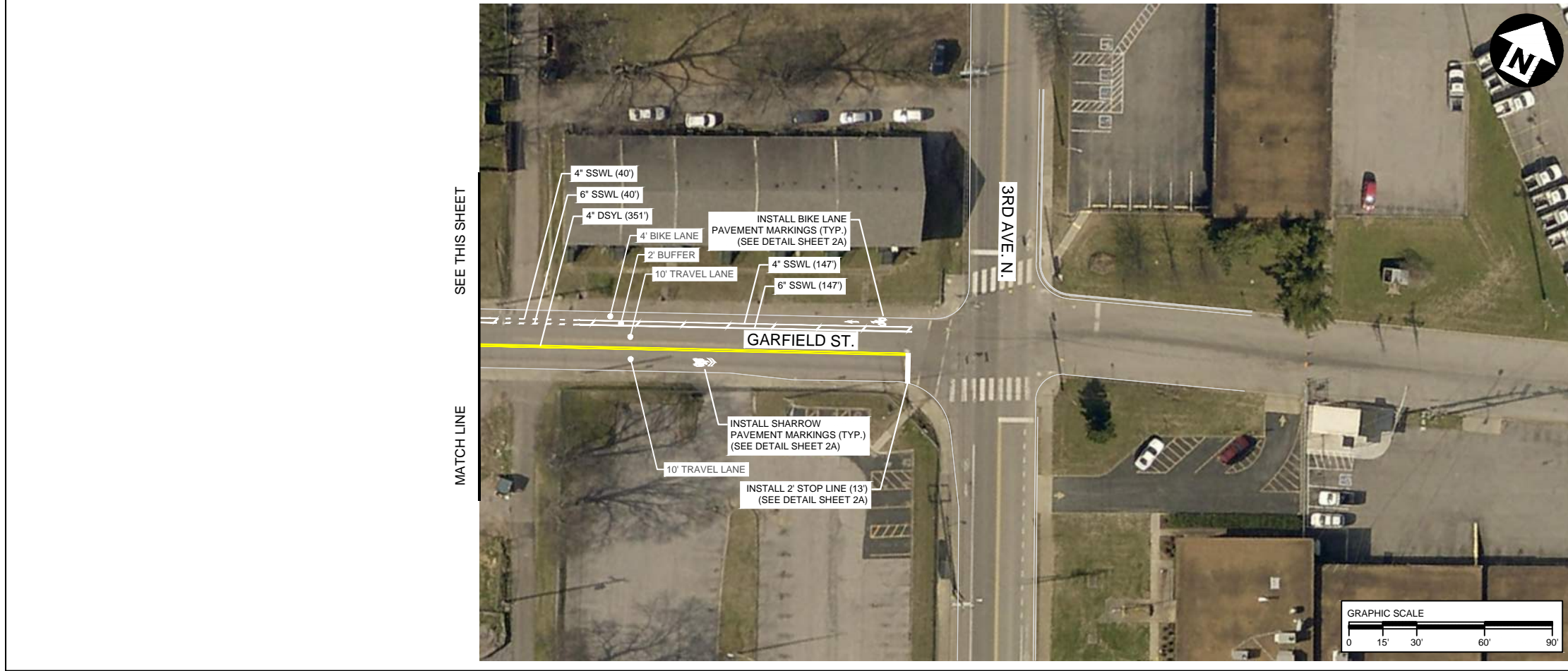
NOT FOR CONSTRUCTION

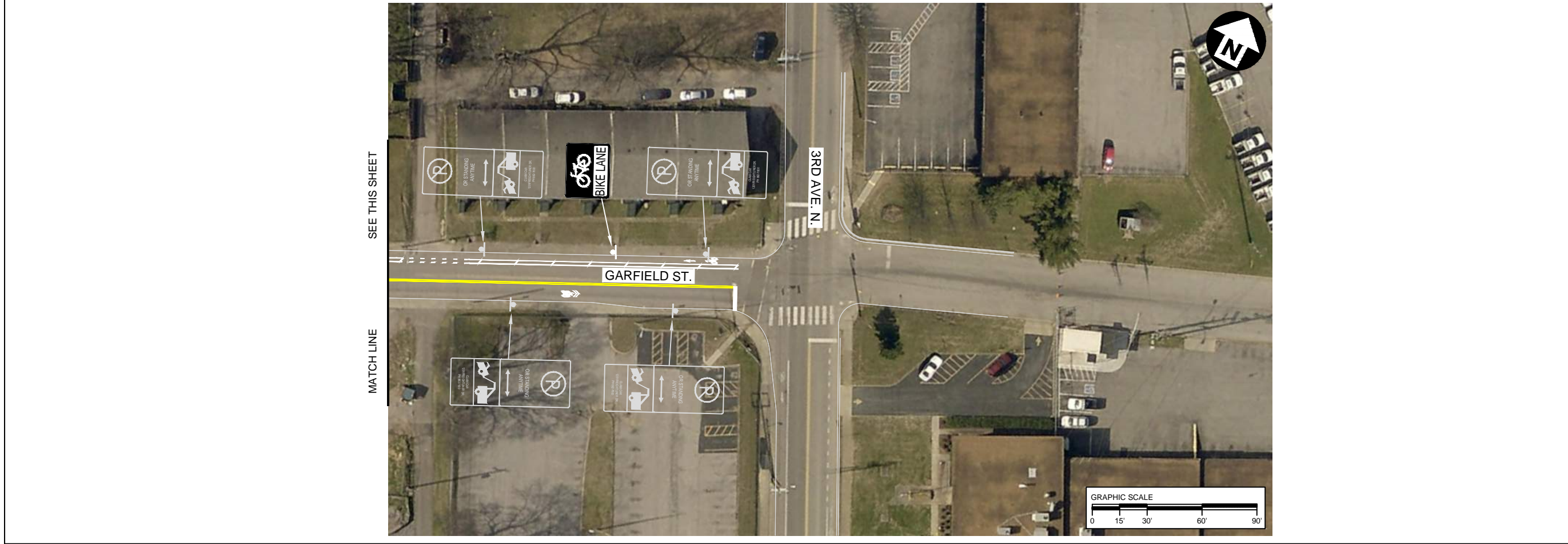
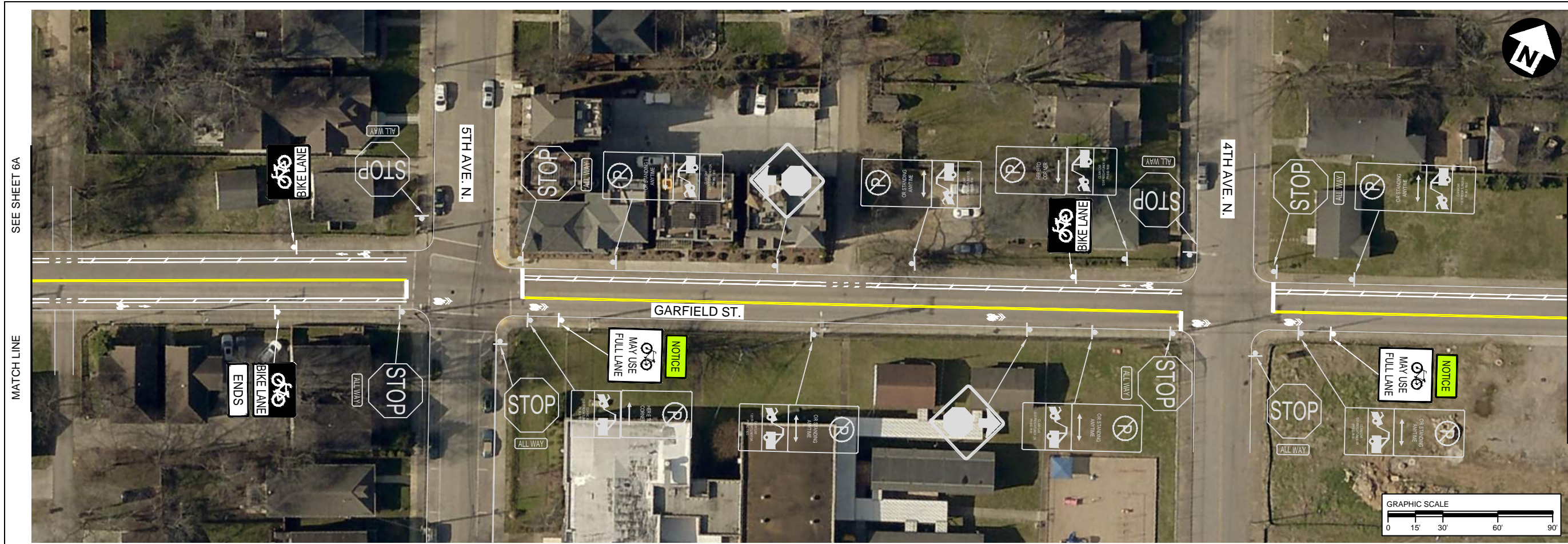
PROPOSED ROADWAY / BIKE PLAN

Proposed Pavement Marking Plan

SCALE: 1"=30'

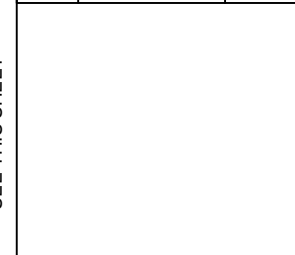
SHEET 7 OF X





FILE NO.	15-0805
DATE:	XX/XX/XX
DESIGNED BY:	XXX
DRAWN BY:	XXX
CHECKED BY:	XXX

REVISION BLOCK	
DATE:	



ALL CONSTRUCTION ACTIVITIES SHALL BE COMPLETED IN FULL COMPLIANCE WITH THE AMERICANS WITH DISABILITIES ACT (ADA) AND ARCHITECTURAL AND TRANSPORTATION BARRIERS COMPLIANCE BOARD, FEDERAL REGISTER 36 CFR PARTS 1190 AND 1191, ACCESSIBILITY GUIDELINES FOR BUILDINGS AND FACILITIES, ARCHITECTURAL BARRIERS ACT (ABA) ACCESSIBILITY GUIDELINES, PROPOSED RULE. PUBLISHED IN THE FEDERAL REGISTER ON JULY 23, 2004, AS HAS BEEN ADOPTED BY METRO.

METROPOLITAN GOVERNMENT
OF NASHVILLE & DAVIDSON COUNTY, TENNESSEE
PUBLIC WORKS DEPARTMENT
ENGINEERING DIVISION

PROPOSED ROADWAY / BIKE PLAN

Proposed Signing Plan

SCALE: 1"=30'

SHEET 7A OF X