



# JEFFERSON STREET POCKET PARK

OCTOBER 9, 2018

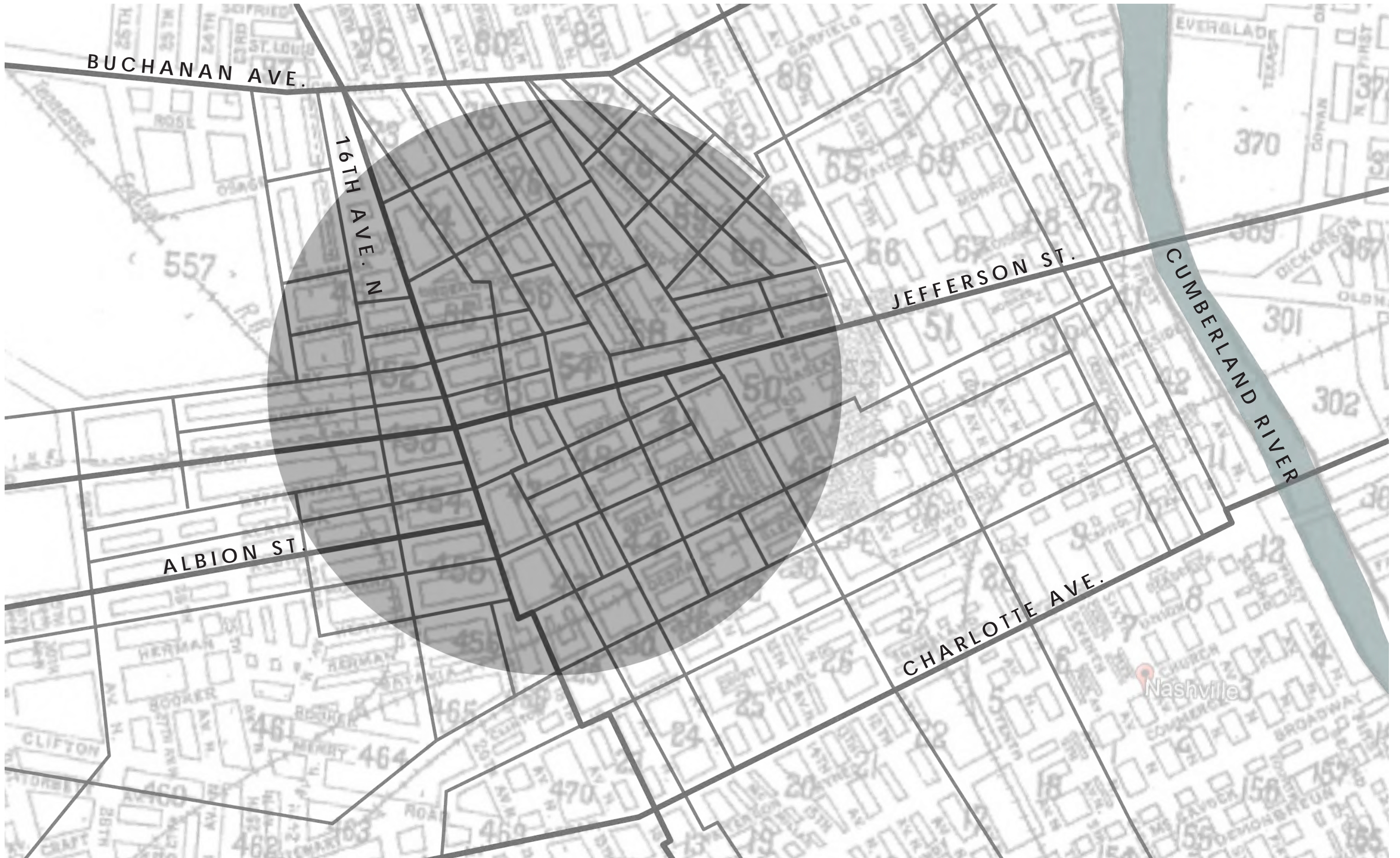


# HISTORICAL THEMES

- Interstate 40
- Brown's Hotel & Dinner Club and the Jefferson Street Business District
- African American Nashville

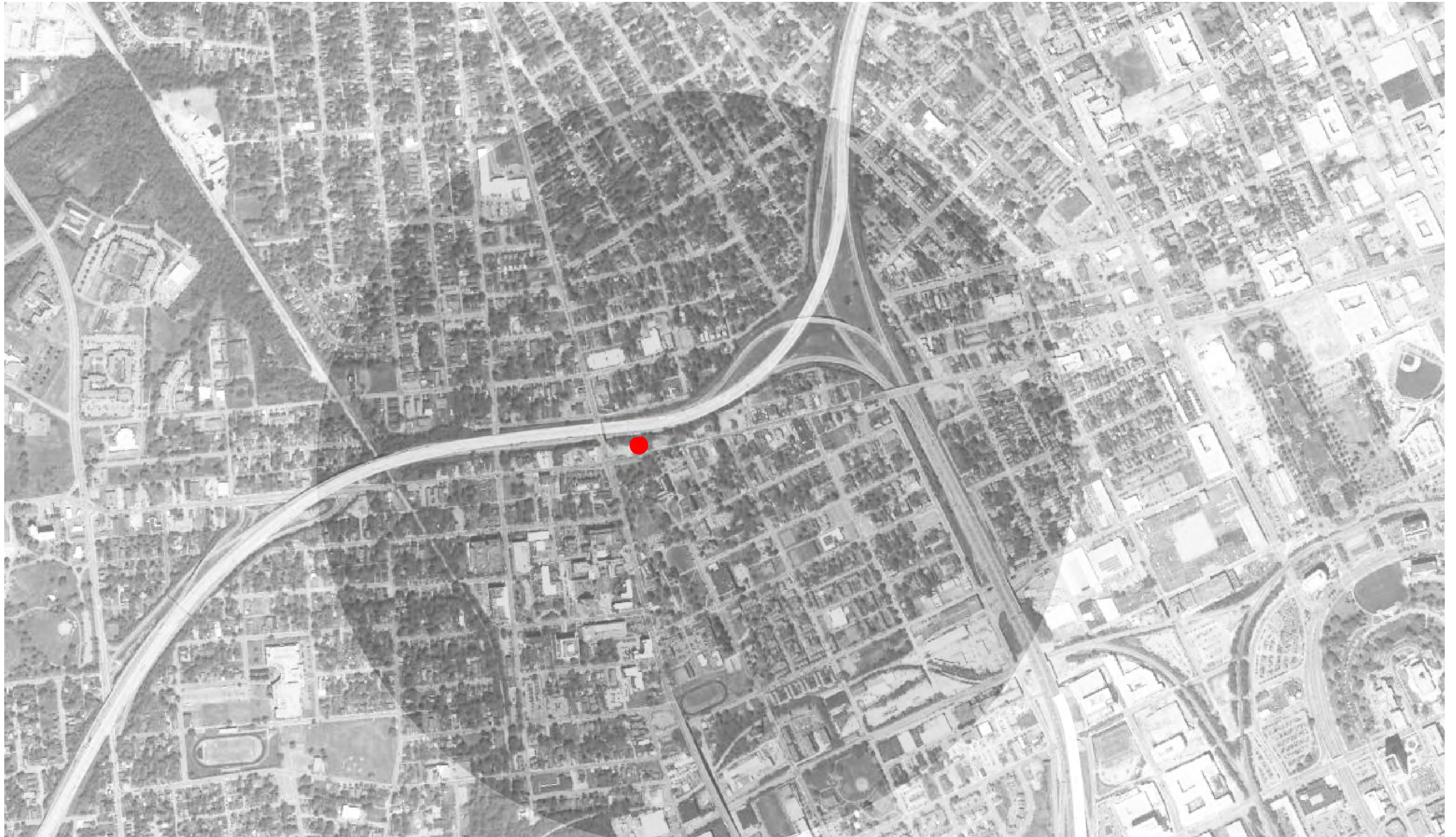


















JEFFERSON STREET POCKET PARK

BROWNS HOTEL + DINNER CLUB





## NASHVILLE

### HOTELS

Carver—1122 Charlotte Ave.  
Y. M. C. A.—4th & Charlotte Aves.  
Carver Courts—White's Creek Pike  
Y. W. C. A.—436 5th Ave. N.  
Bryant—500 8th Ave. S.  
Y. M. C. A.—436-5th Ave., N.  
Fred Douglas—501 4th Ave. N.  
Brown's—1610 Jefferson St., North

### TOURIST HOMES

Mrs. C. James—1902 18th St. N.  
Mrs. Moore—1702 Jefferson St., North

### BEAUTY PARLORS

Queen of Sheba—1503 14th Ave. N.  
Estelle's—1311 3rd Ave., S.  
Myrtles—2423 Eden St.

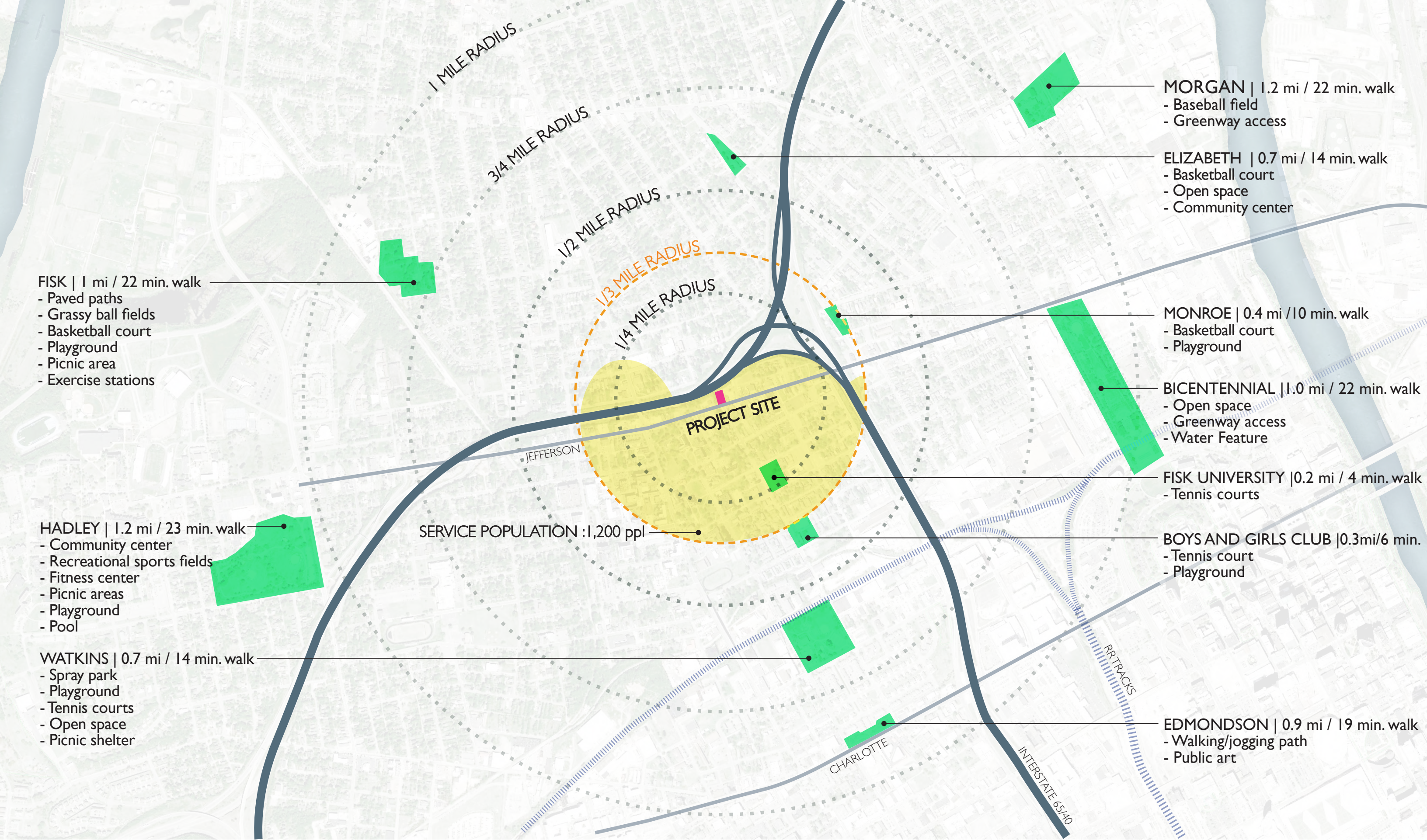
### BEAUTY SCHOOLS

Bowman's—409 4th Ave., N.

### RESTAURANTS

Dew Drop Inn—2514 Booker St.  
Black Hawk—1124 Cedar St.  
Martha's—303 Cedar St.  
Peacock Inn—Jefferson and 18th Ave.  
Ann's Tea Room—Jefferson and 18th Ave.





I - 40

EMPTY LOT

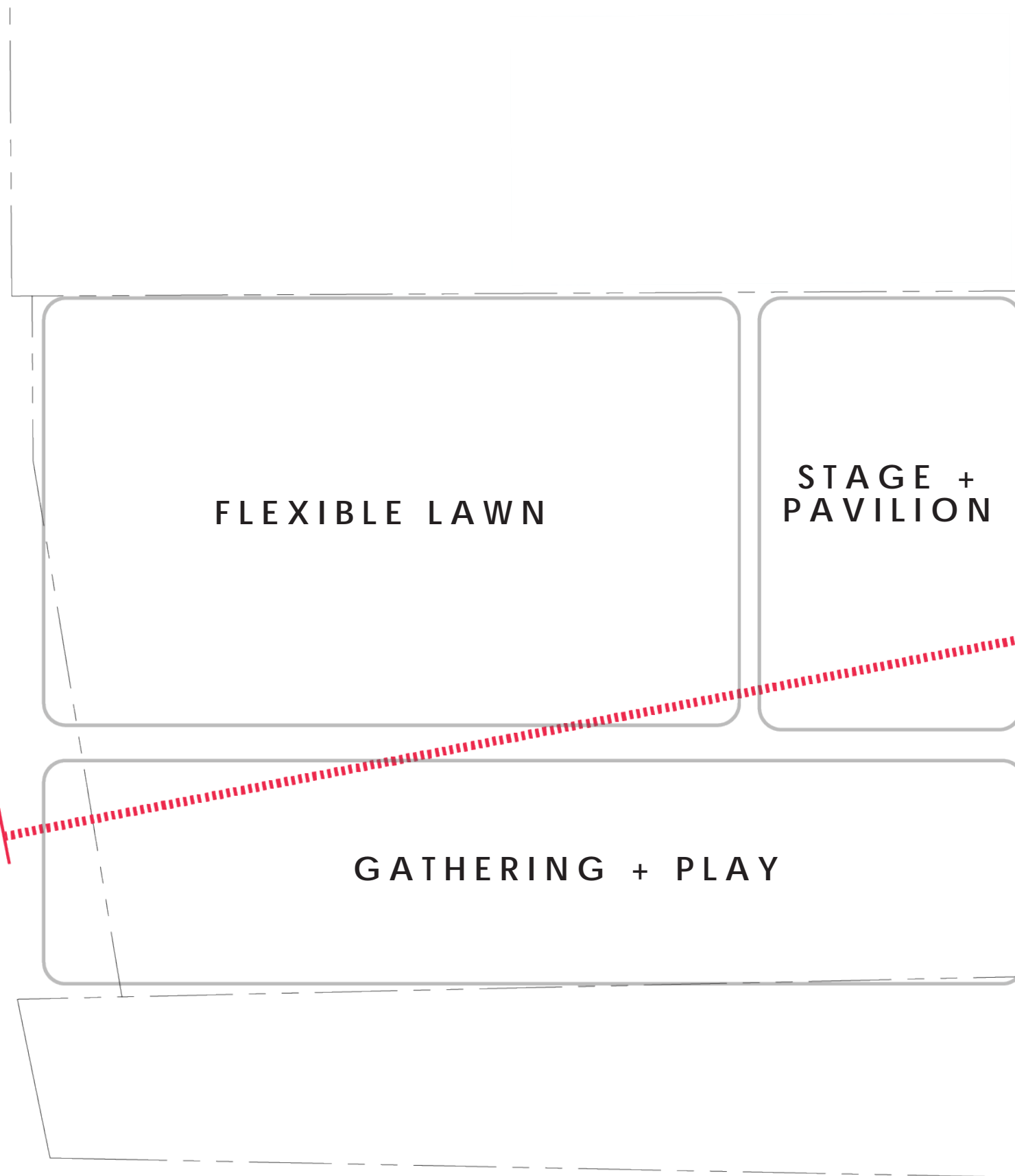
JEFFERSON STREET POCKET PARK

EMPTY LOT

JEFFERSON STREET

SIDEWALK  
16 TH STREET

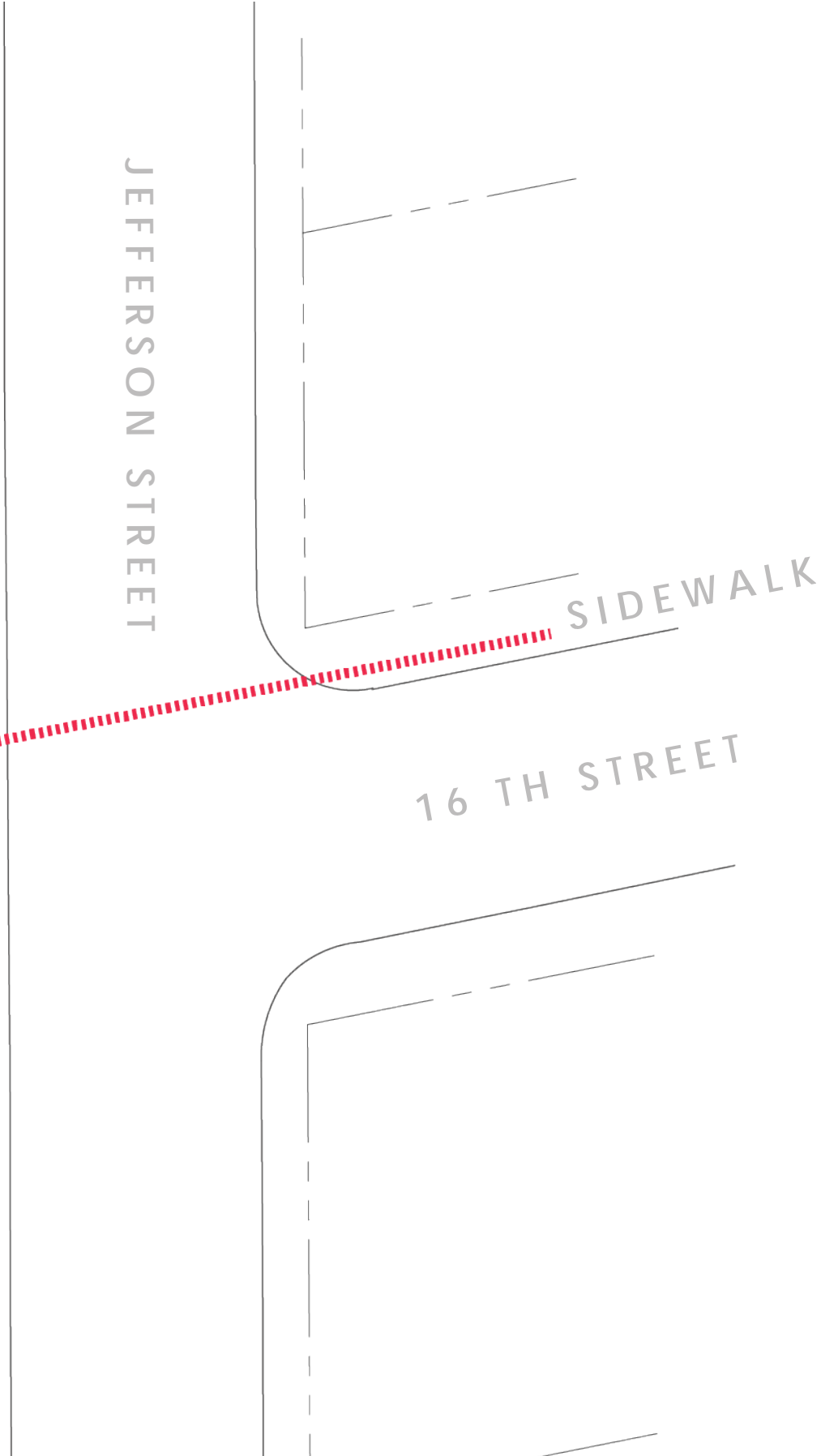
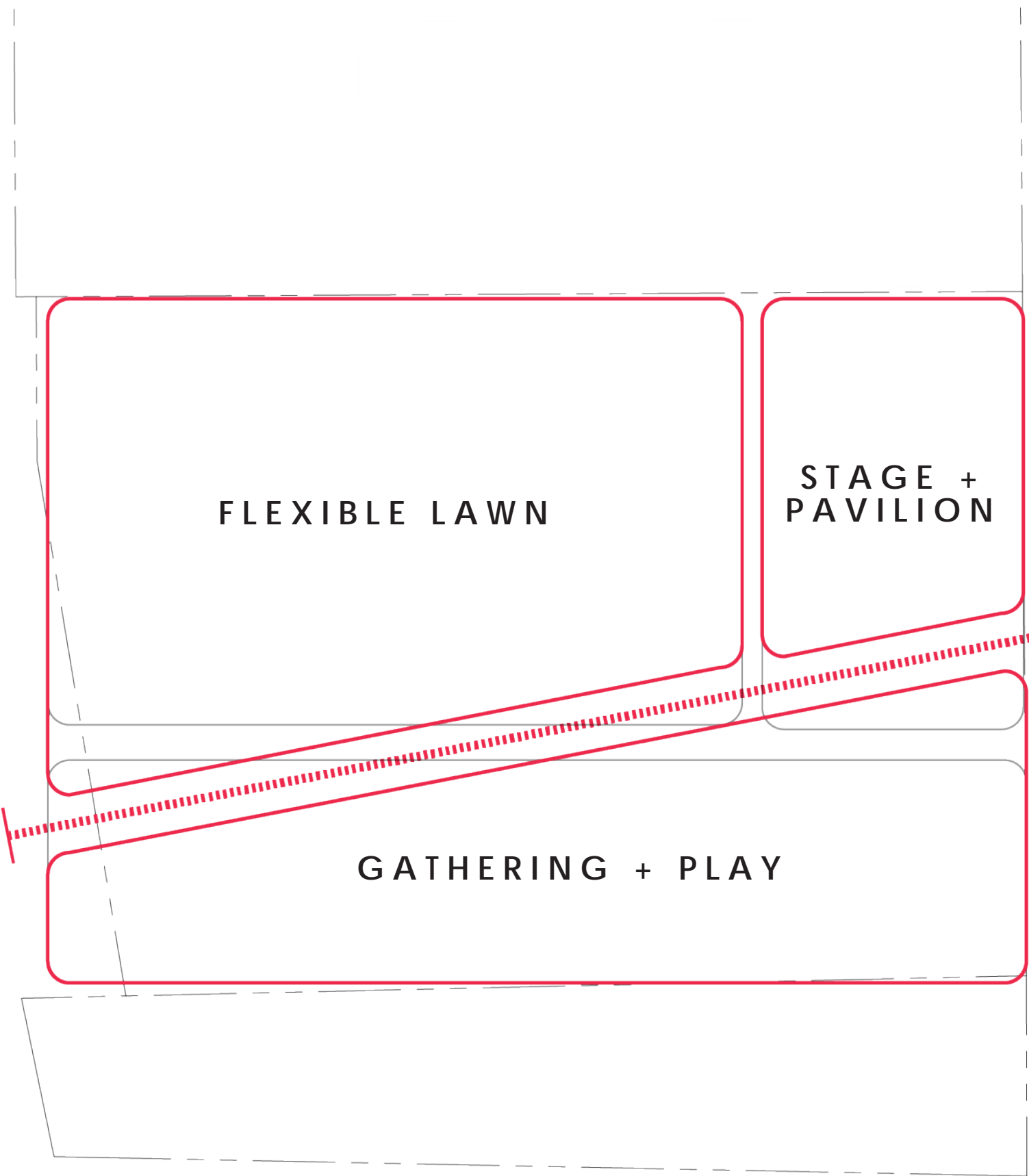
1 - 40



JEFFERSON STREET

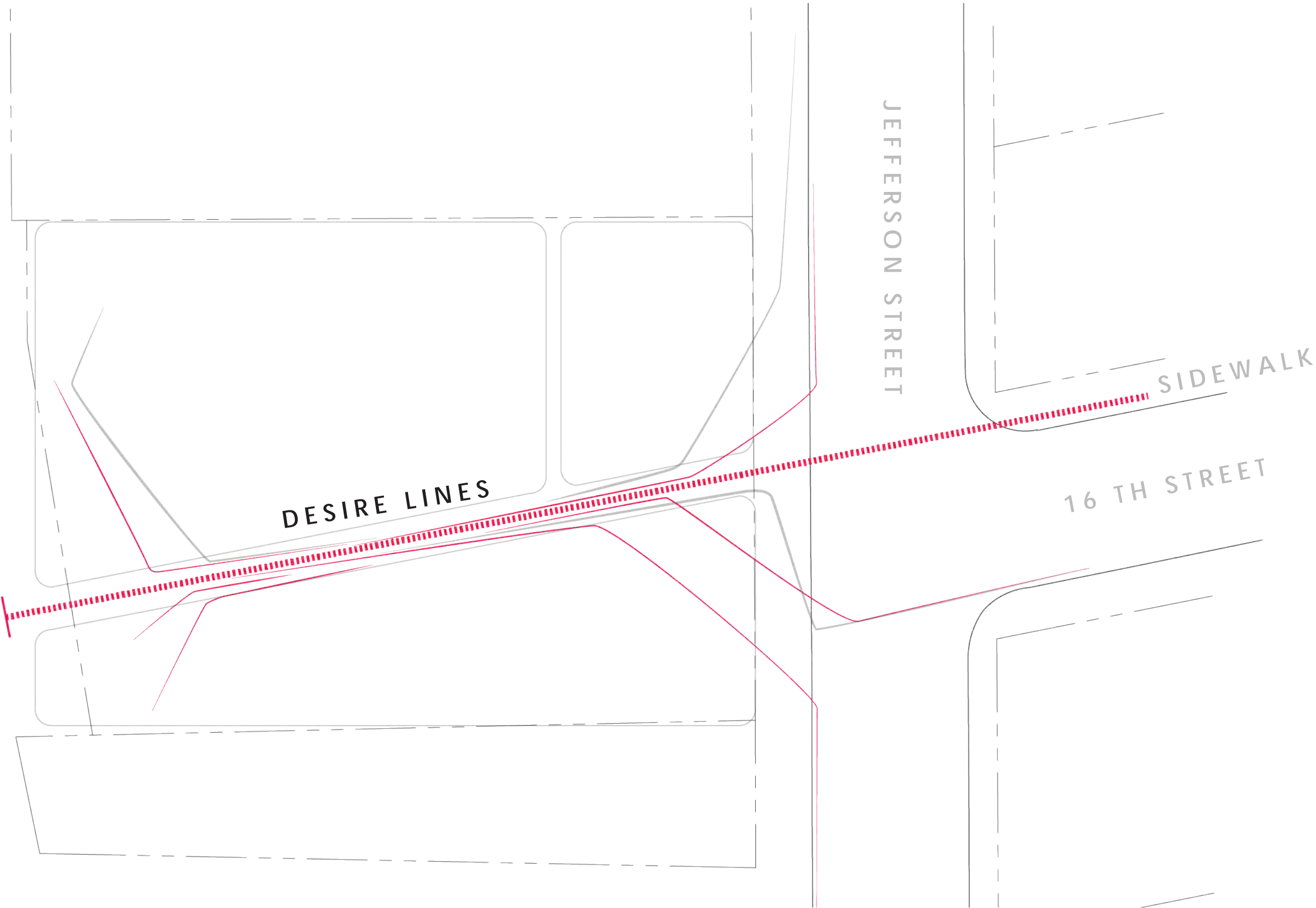
SIDEWALK  
16 TH STREET

1 - 40

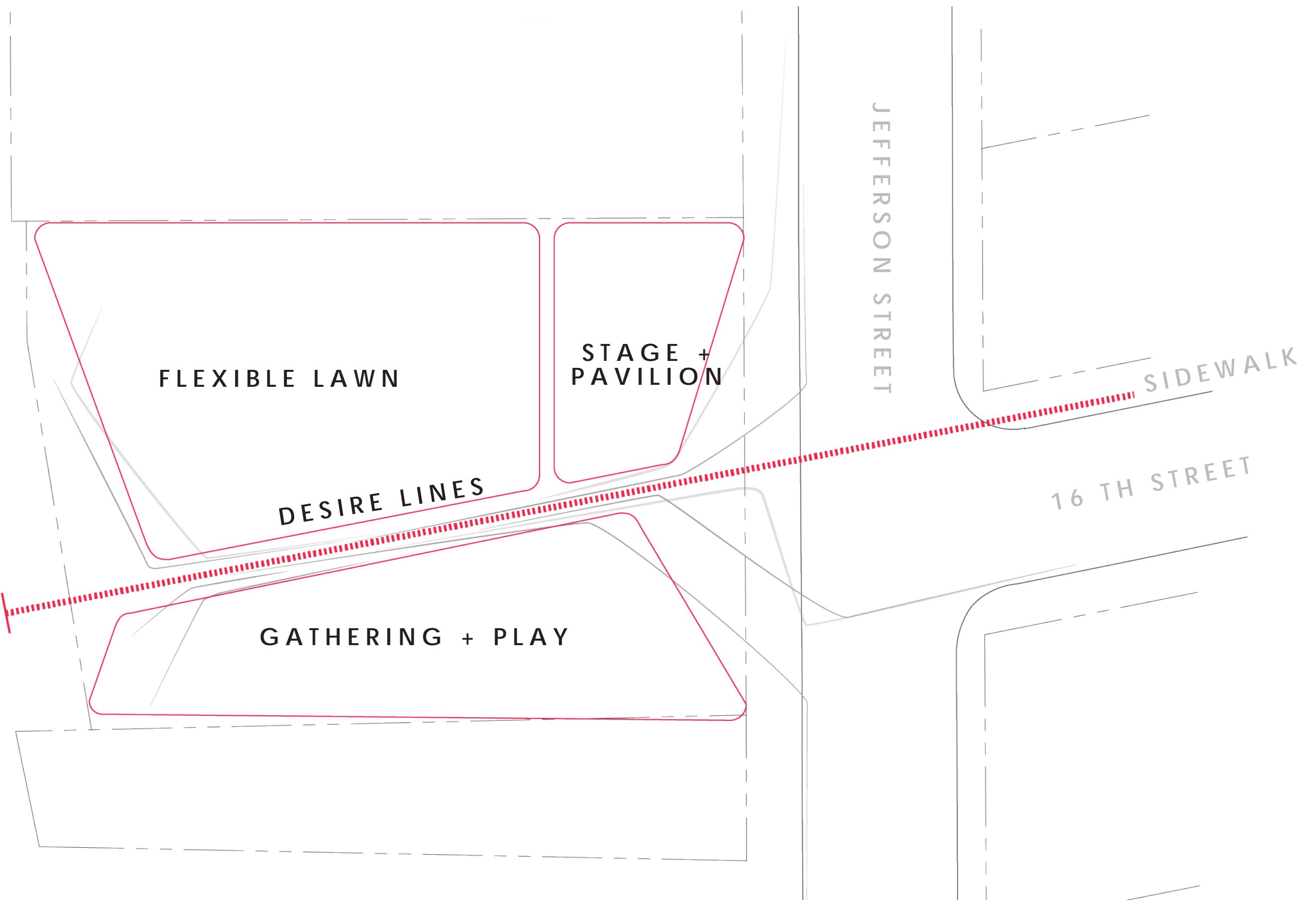




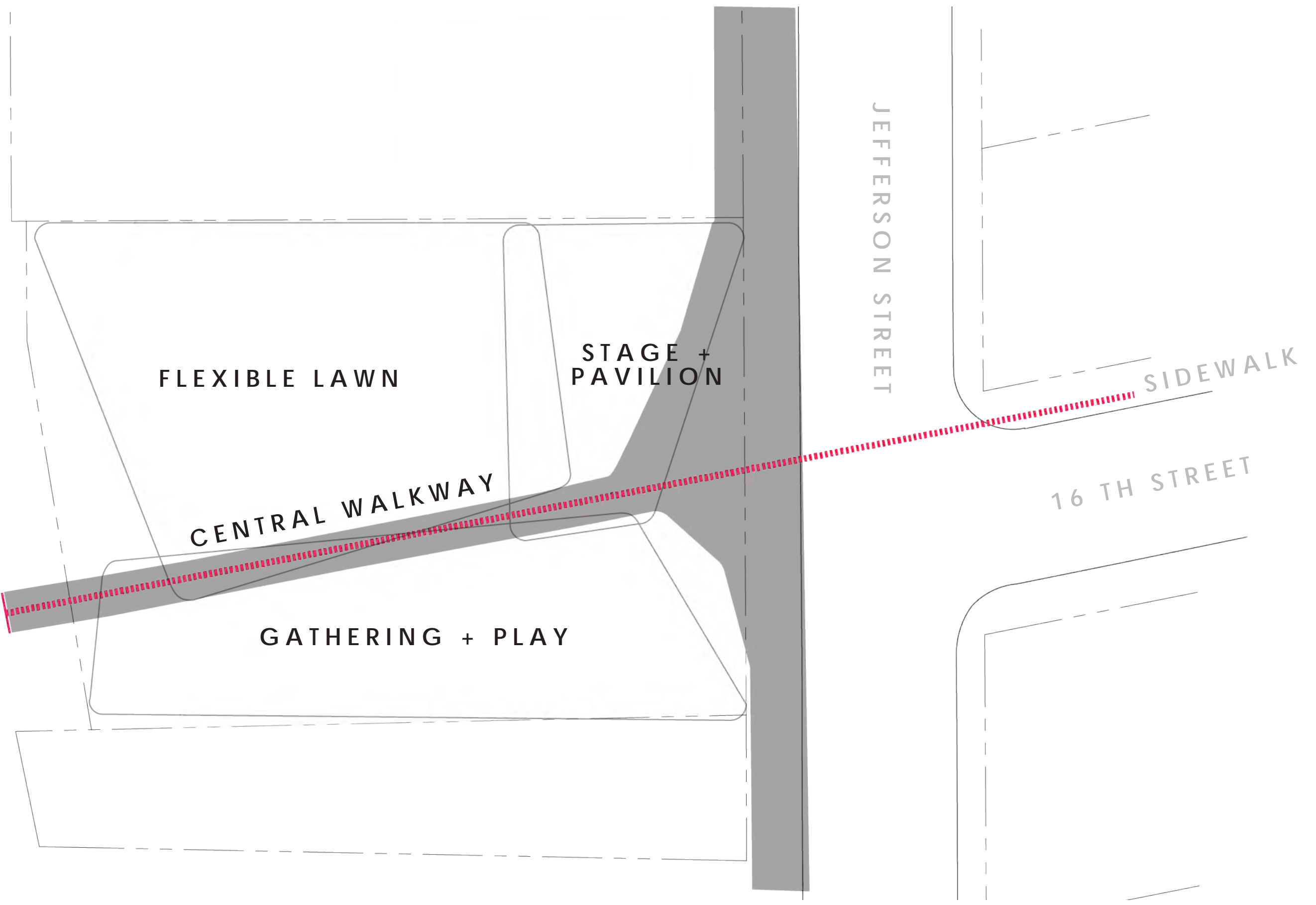
1 - 40



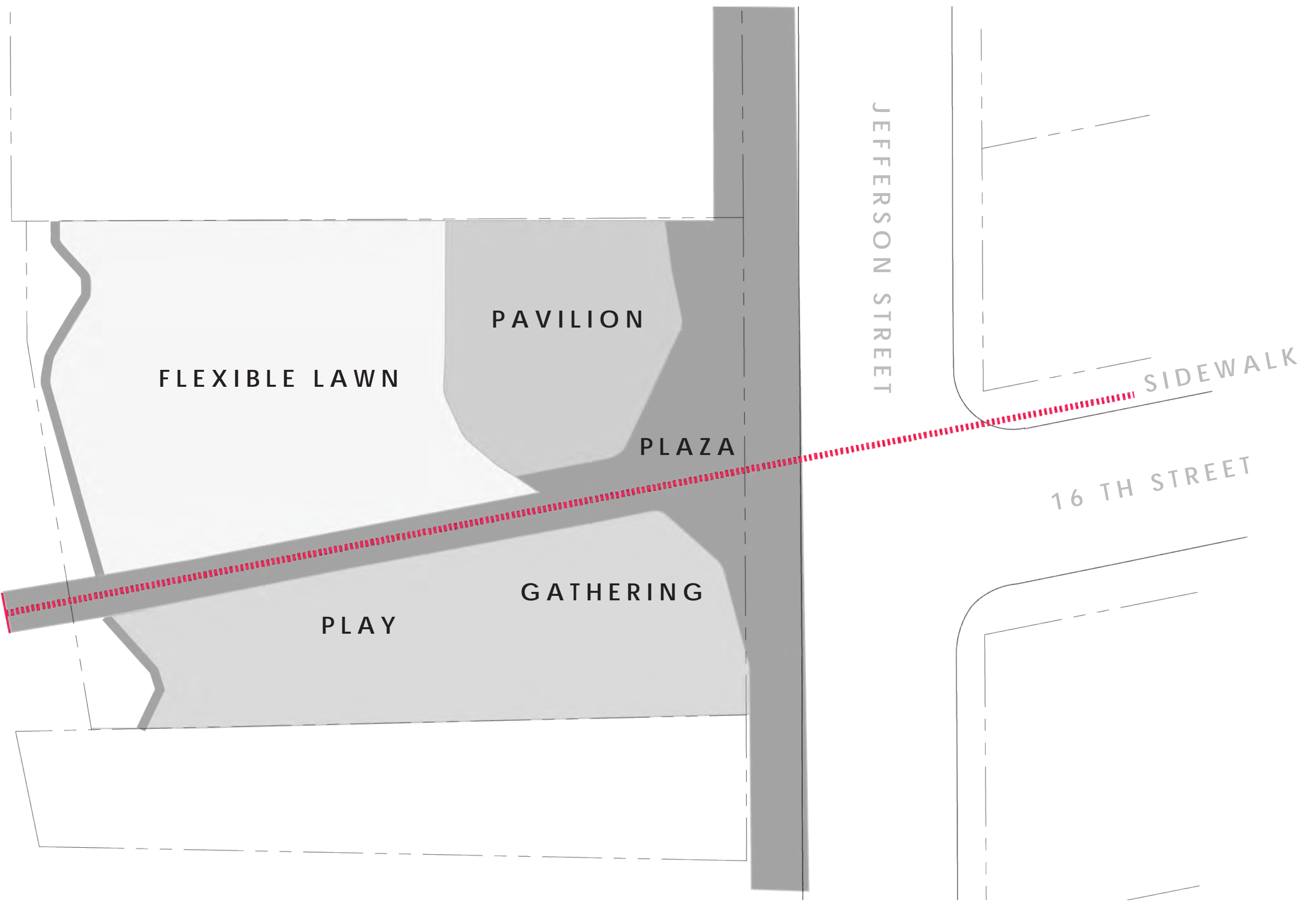
1 - 40



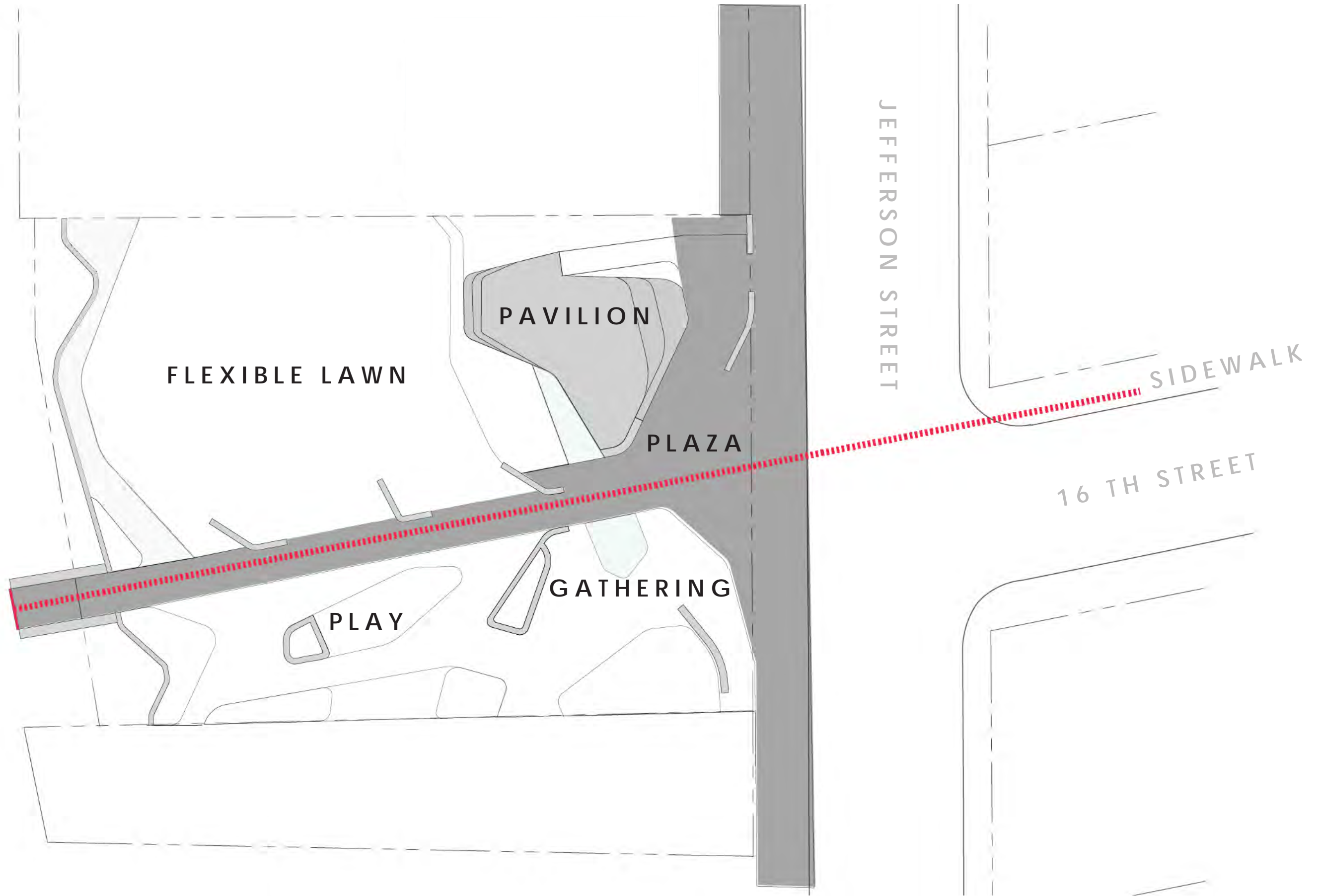
1 - 40

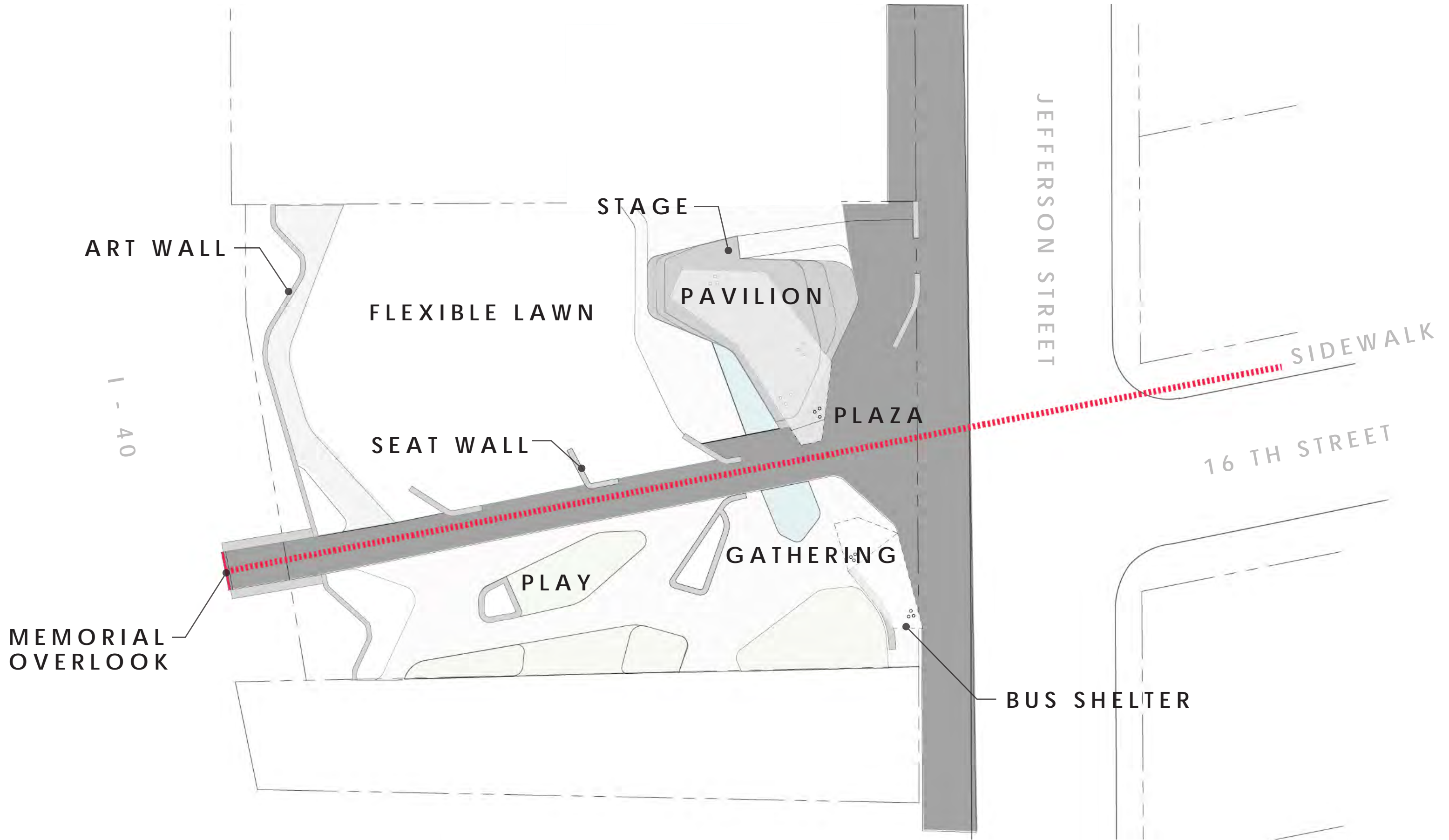


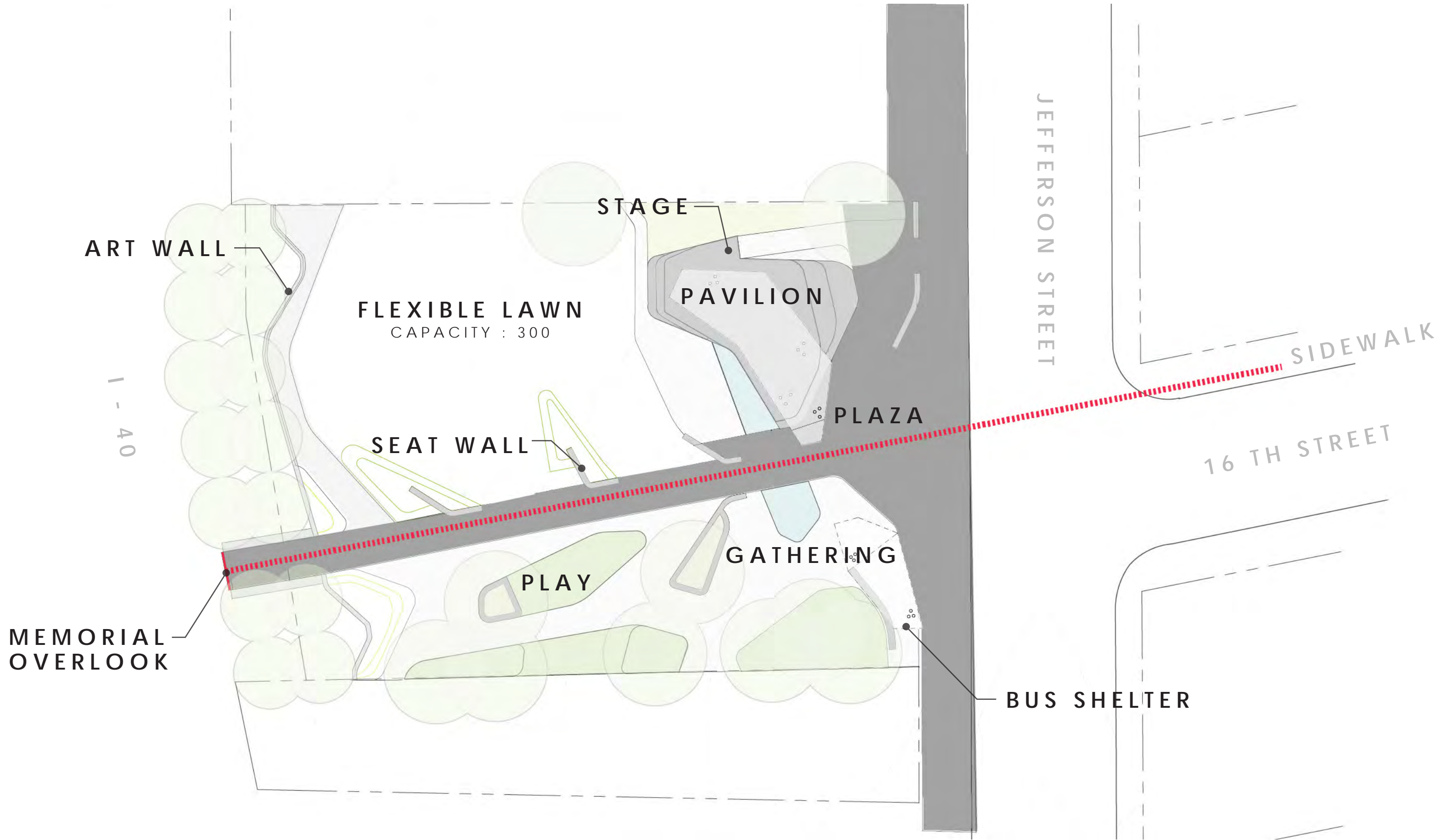
1 - 40



1 - 40









JEFFERSON STREET

FLEXIBLE LAWN  
CAPACITY : 300

PAVILION

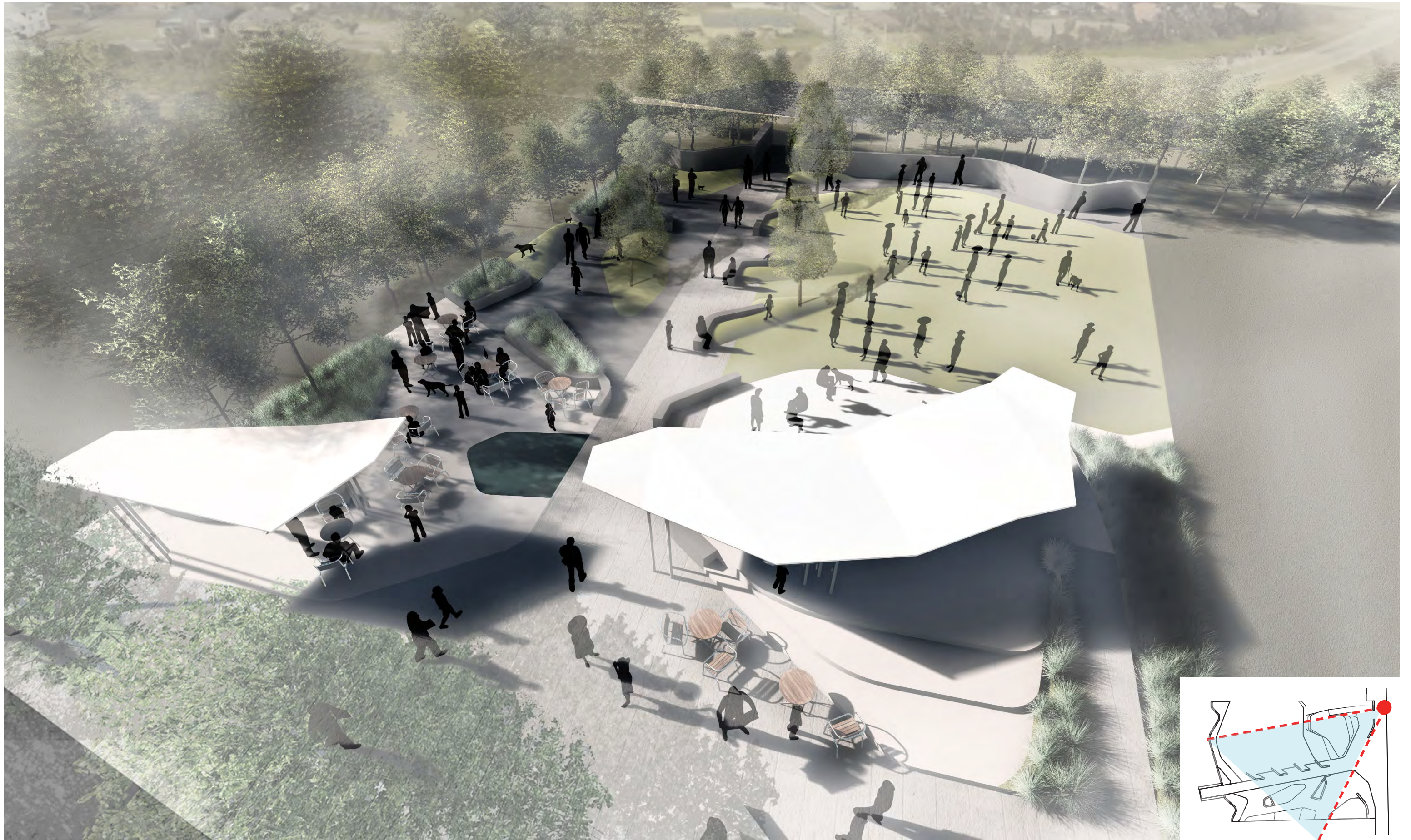
PLAZA

PLAY

GATHERING

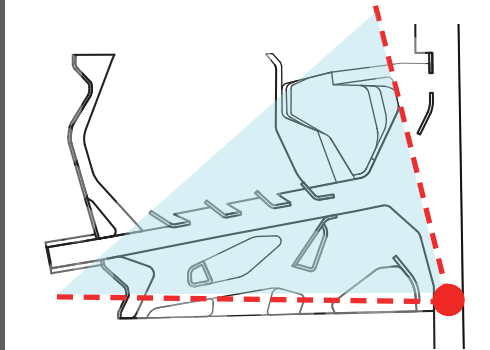
1 - 40

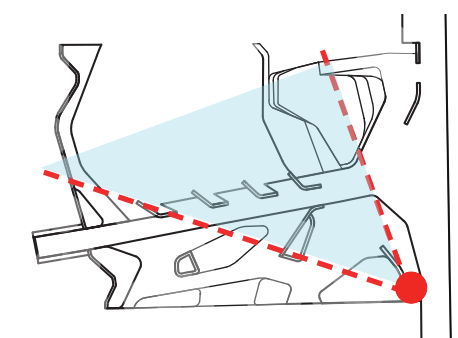




JEFFERSON STREET POCKET PARK







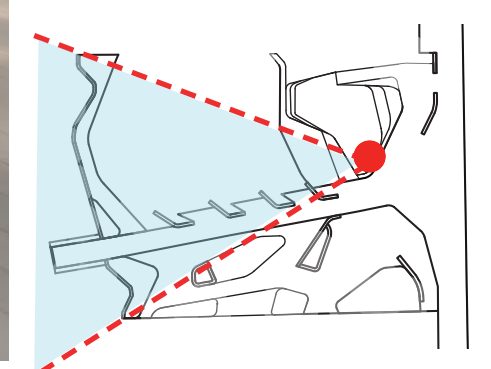
JEFFERSON STREET POCKET PARK

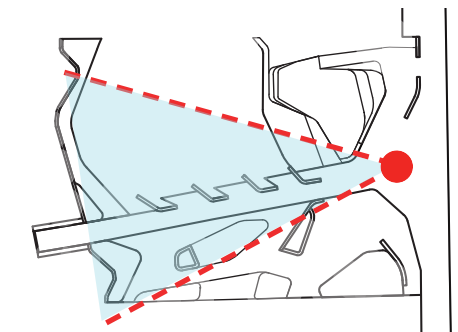
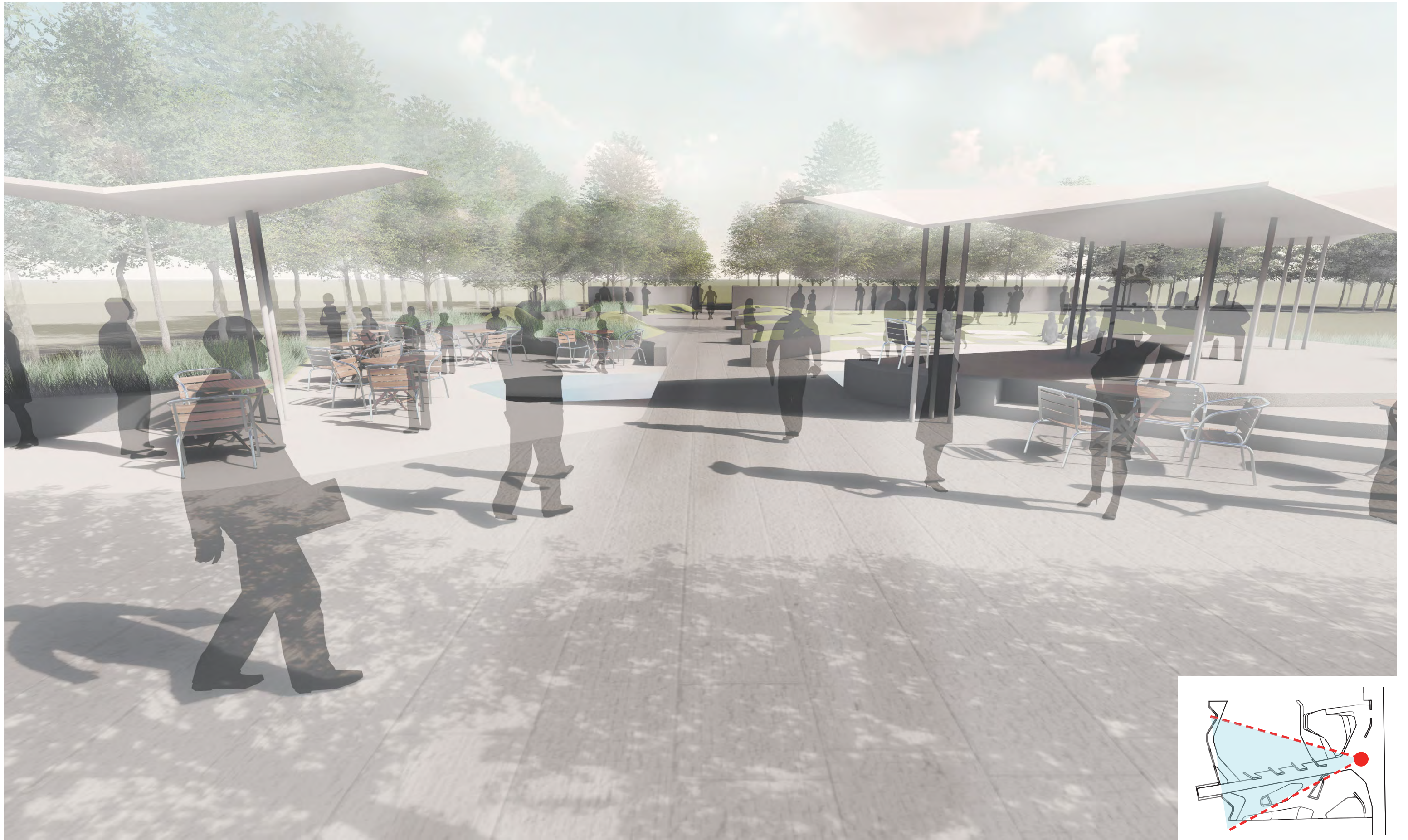


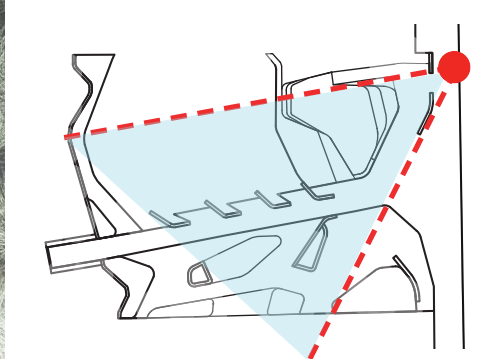
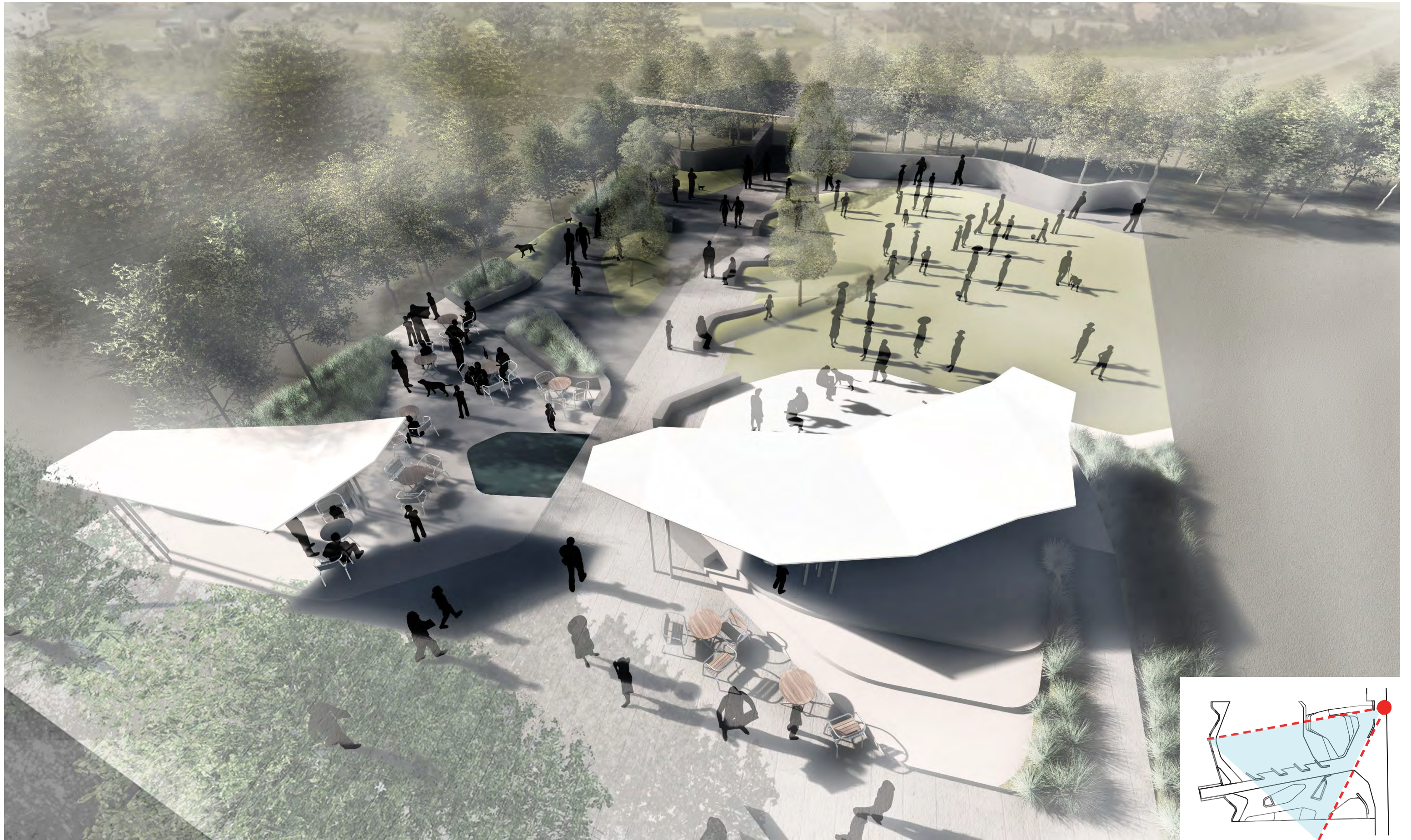


JEFFERSON STREET POCKET PARK



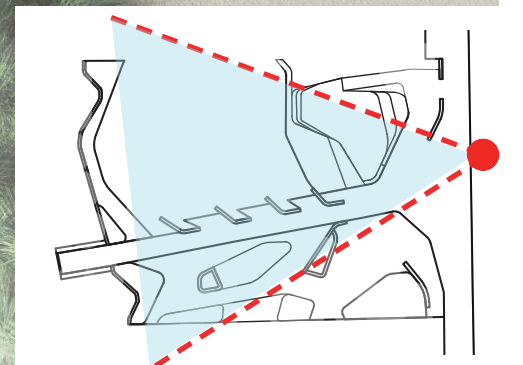
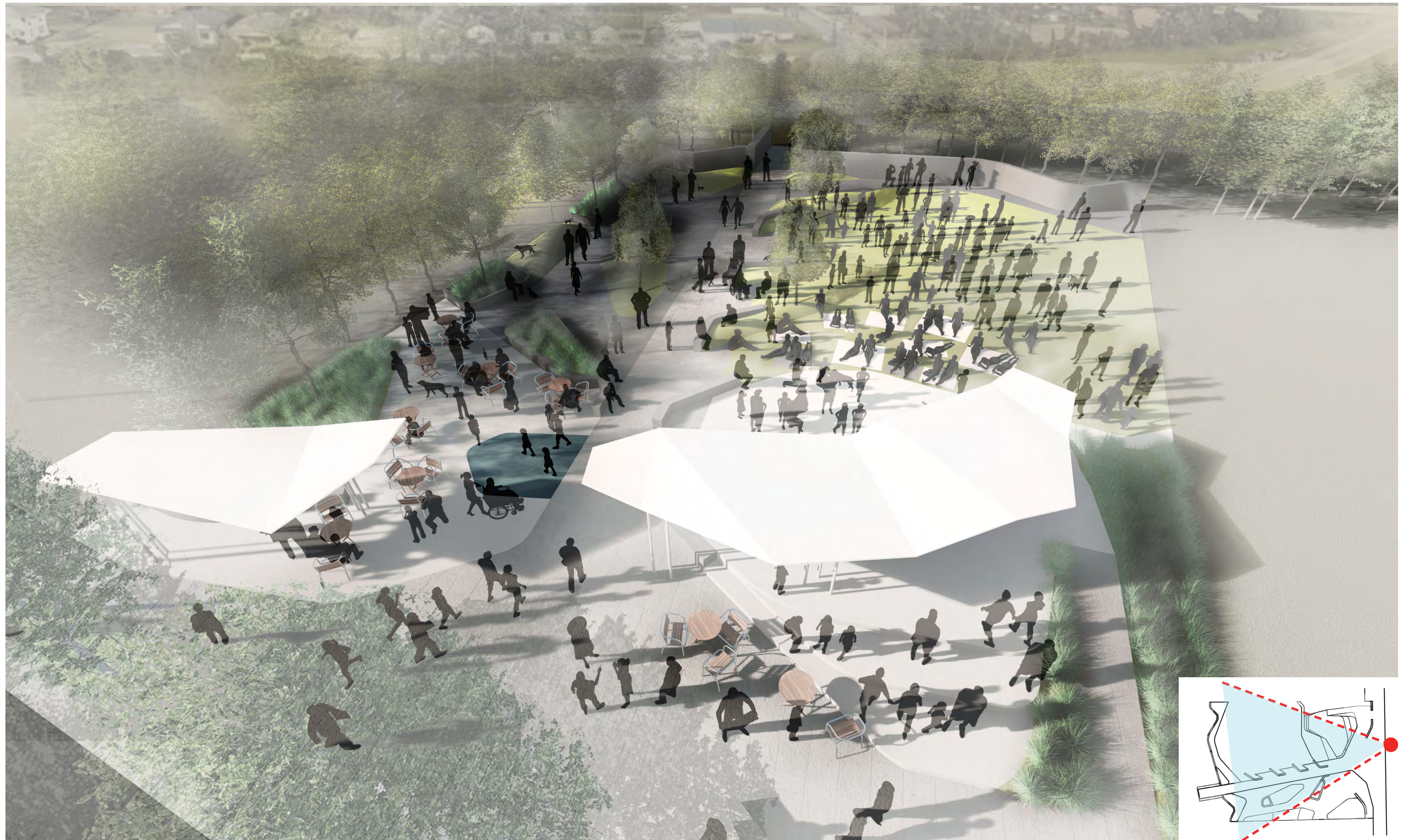




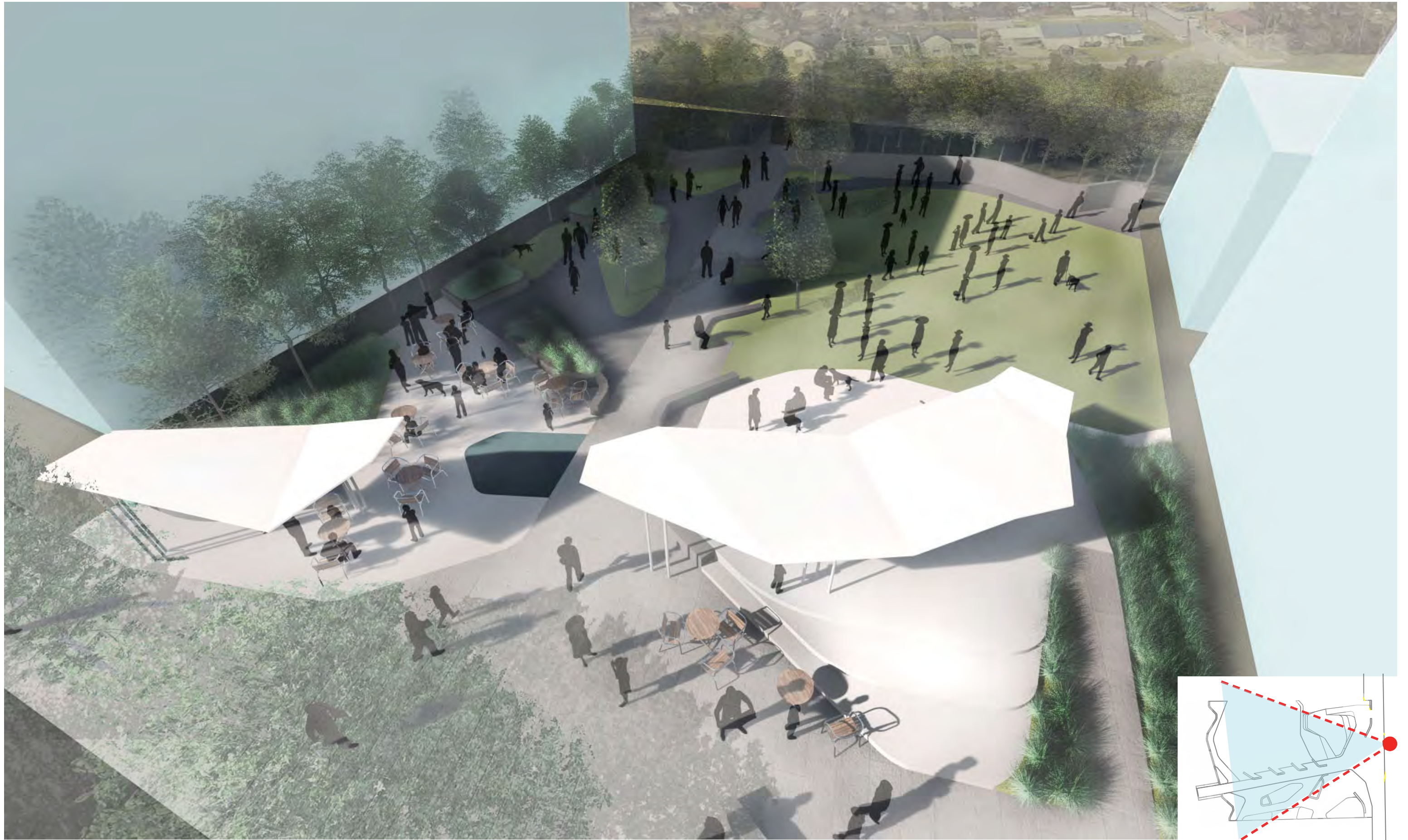


JEFFERSON STREET POCKET PARK





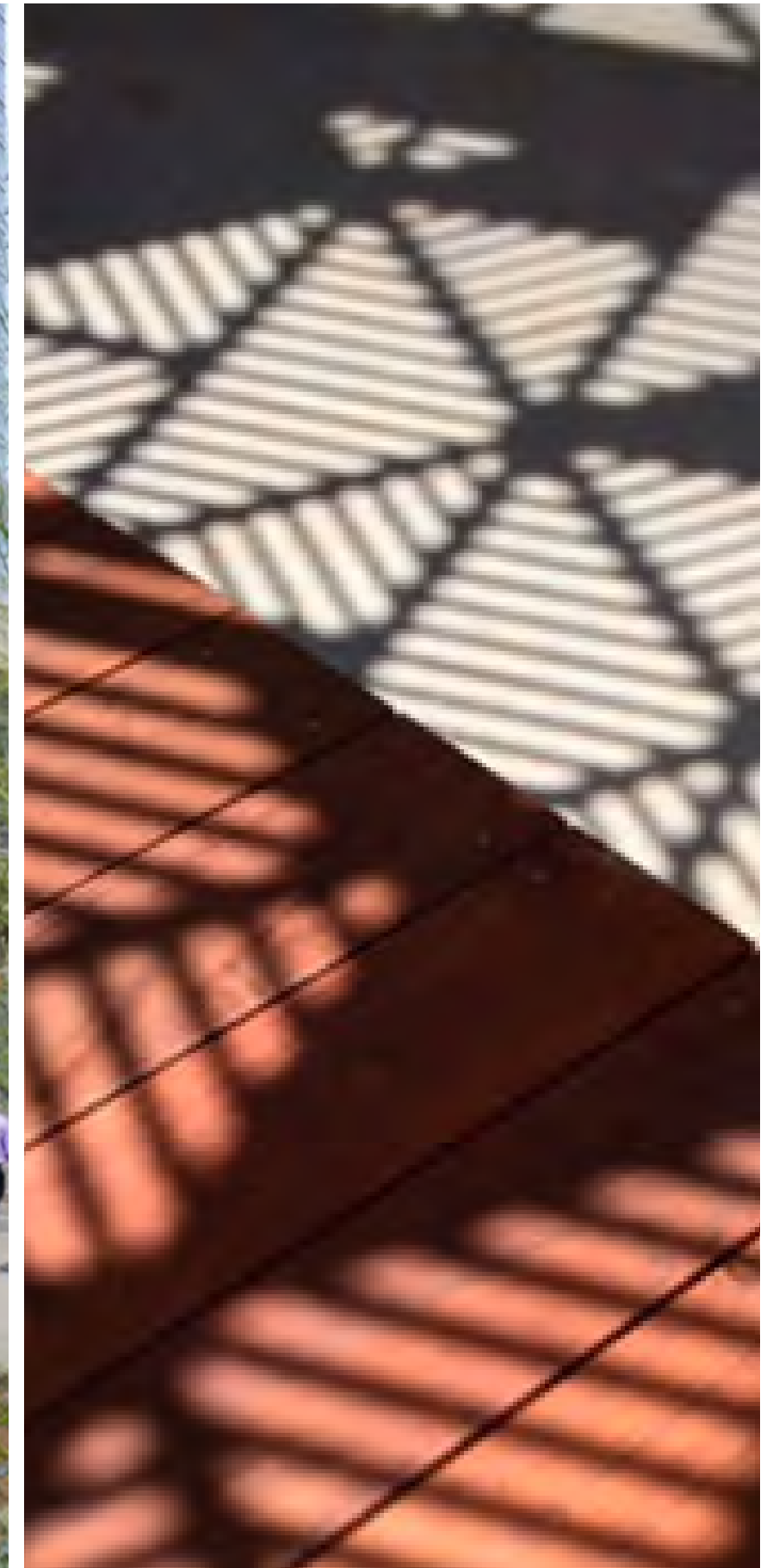


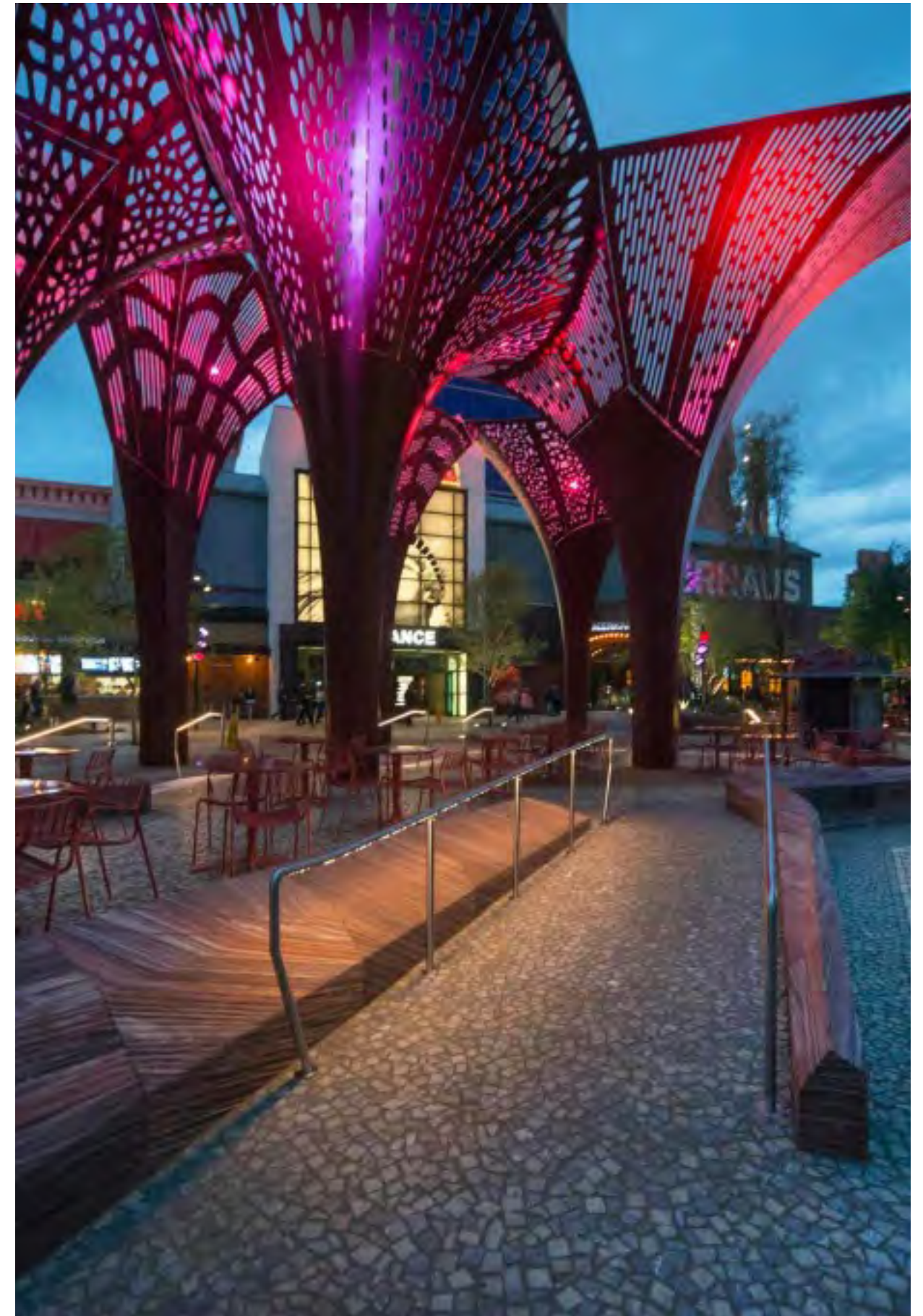
























JEFFERSON STREET POCKET PARK  
PRECEDENT IMAGERY



