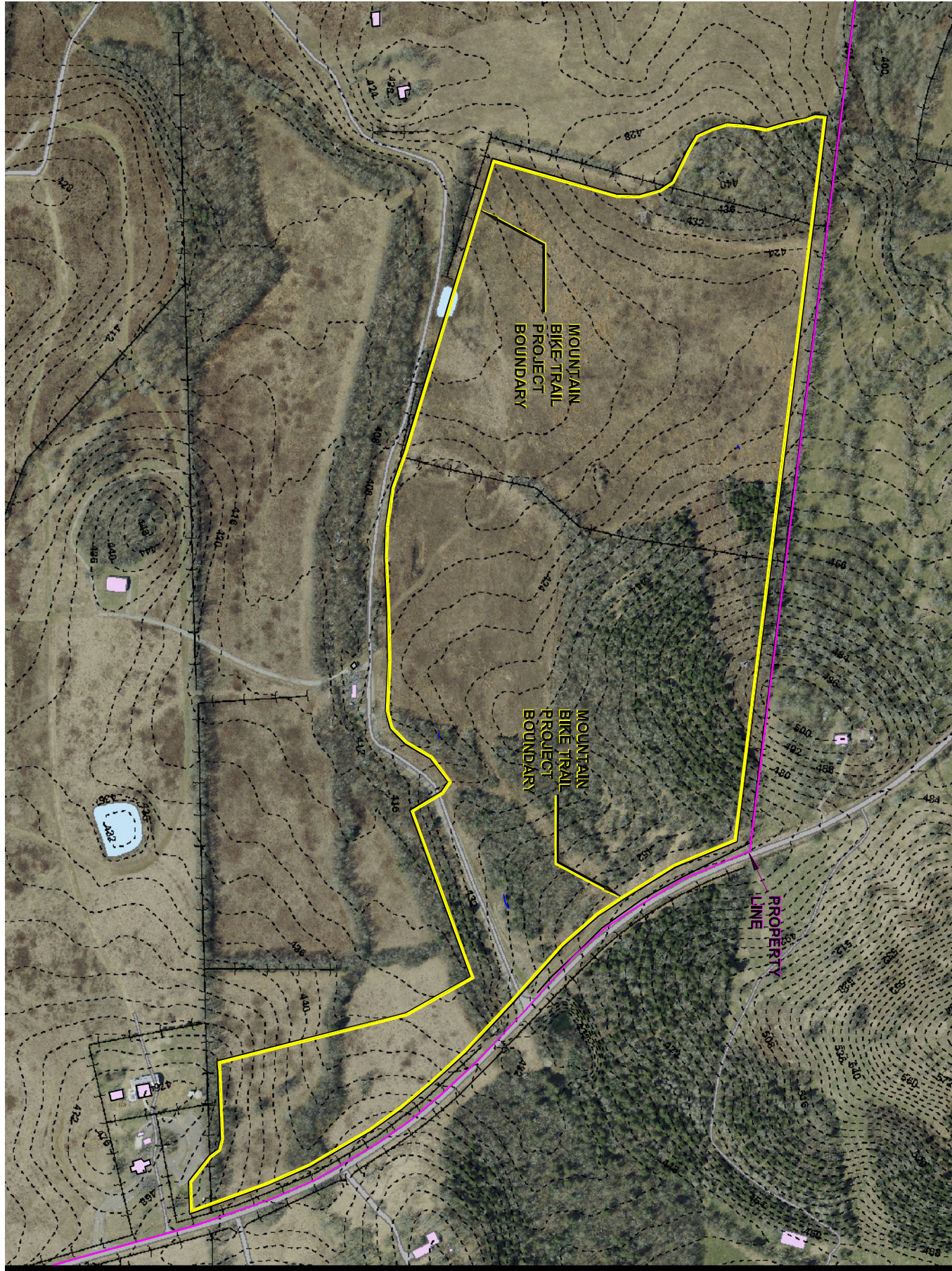
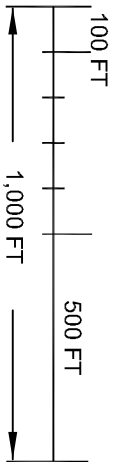


DATE: SEPT. 28, 2012

**METRO NASHVILLE - BELLS BEND PARK**  
**MOUNTAIN BIKE TRAIL**  
**PROPOSED PROJECT BOUNDARY ACREAGE**



SCALE  
SEE BELOW  
CONTOUR  
INTERVAL = 4 FT.

PROJECT AREA  
= 66 ACRES ±  
PARK AREA  
= 808.74 ACRES