

Friends of Warner Parks Tree Trust Program

The trees along this trail are planted and maintained as part of the Friends of Warner Parks Tree Trust Program that commemorate births, anniversaries and other milestone events and to memorialize or honor individuals or groups. This program promotes the use of native trees for planting in maintained and natural areas. Call Friends of Warner Parks at 615.370.8053 to participate or for more information.

The Warner Parks are a very fragile and unique natural area in an urban setting and can remain productive and enduring for future generations only if we respect and protect them today.

American Plum is a beautiful native fruit tree with very fragrant spring blossoms.



Warner Park Nature Center

The Nature Center is a year-round environmental education facility offering public programs on many topics. Tree programs are scheduled regularly throughout the year. Visitors are welcome to explore the grounds and gardens and enjoy the native plant landscaping. Park maps and literature, including a complete list of Park trees, is available at the Nature Center Trailhead and in the Learning Center.

Warner Park Nature Center
 7311 Highway 100, Nashville, TN 37221
 615.352.6299
 wpnc@nashville.gov
 www.nashville.gov/parks/wpnc
 brochure and photos by Deb Beazley
 2009

The Metro Board of Parks and Recreation does not discriminate on the basis of age, race, sex, color, national origin or disability in admission, access to or operations of its programs, services or activities. For TTY (relay service), call 1-800-849-0299. For questions, concerns or requests regarding the American Disabilities Act call 862-8400.



The Meadow Tree Trail

Staghorn Sumac



Friends of Warner Parks

Redbud

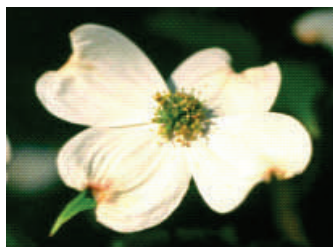
The Meadow Tree Trail offers visitors an opportunity to see a variety of trees native to Middle Tennessee, while walking on a short path through a lovely meadow near the Nature Center. Many of the trees have been planted and tagged, while some have grown here naturally and have been included in the trail. You may see several representatives of the same species along the way while only one will be noted on the map.

The meadow habitat changes with the seasons. It may be full of wildflowers, new spring growth, or cutover in the winter. Whatever the season, enjoy your walk among the trees, flowers and wildlife of Warner Parks.

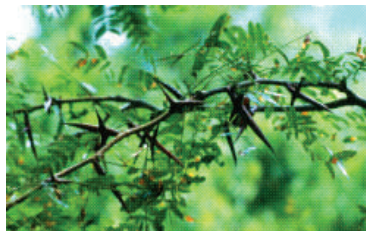
Remember that collecting is not allowed.

1. Redbud *Cercis canadensis**
2. Blackhaw *Viburnum prunifolium*
3. Shellbark Hickory *Carya laciniosa**
4. Yellow Buckeye *Aesculus flava**
5. American Holly *Ilex opaca**
6. Bur Oak *Quercus macrocarpa**
7. Yellowwood *Cladrastis lutea**

Showy white bracts surround the tiny greenish blossoms of our lovely Flowering Dogwood.



8. Winged Sumac *Rhus copallinum*
9. Wild Black Cherry *Prunus serotina*
10. Staghorn Sumac *Rhus typhina*
11. Shingle Oak *Quercus imbricaria**
12. Flowering Dogwood *Cornus florida**
13. Wild Plum *Prunus americana**



The twigs and young branches of **Honey Locust** are covered with large red, branched thorns.

14. Red Mulberry *Morus rubra**
15. Red Oak *Quercus rubra**
16. Hop-tree *Ptelea trifoliata**
17. Sweetgum *Liquidambar styraciflua**
18. Pawpaw *Asimina triloba**
19. Sycamore *Platanus occidentalis**
20. Carolina Buckthorn *Ramnus caroliniana**
21. September Elm *Ulmus serotina**
22. Winged Elm *Ulmus alata*
23. Blackgum *Nyssa sylvatica*
24. Mockernut Hickory *Carya tomentosa**
25. Pignut Hickory *Carya glabra**
26. Roughleaf Dogwood *Cornus drummondii**
27. Sassafras *Sassafras albidum**
28. Tulip Poplar *Liriodendron tulipifera*

With distinctive leaves and showy spring flowers, the **Tulip Poplar** is our state tree and a member of the Magnolia family.



29. Honey Locust *Gleditsia triacanthos*
30. Spicebush *Lindera benzoin*
31. American Basswood *Tilia americana**
32. Little-Hip Hawthorn *Crataegus spathulata**

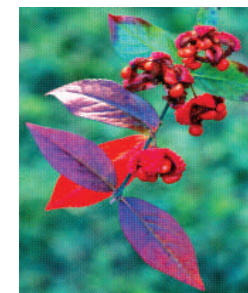
33. American Elm *Ulmus americana**
34. Sugar Maple *Acer saccharum**
35. American Beech *Fagus grandifolia**
36. Persimmon *Diospyros virginiana**



The soft orange fruits of our **Persimmon** are an important food for wildlife in the fall.

37. American Hornbeam *Carpinus caroliniana**
38. Hop-hornbeam *Ostrya virginica**
39. Black Oak *Quercus velutina*
40. Box Elder *Acer negundo*
41. Kentucky Coffeetree *Gymnocladus dioica**
42. Harbison's Hawthorn *Crataegus harbisonii**
43. White Ash *Fraxinus americana*
44. Black Walnut *Juglans nigra*
45. Chinkapin Oak *Quercus muehlenbergii*
46. Bitternut Hickory *Carya cordiformis*
47. Wahoo *Euonymus atropurpureus**
48. Hearts-a-bustin' *Euonymus americanus*
49. Slippery Elm *Ulmus rubra*
50. Southern Hackberry *Celtis laevigata*
51. Eastern Red Cedar *Juniperus virginiana*

Hearts-a-bustin' with Love is a colorful native shrub with bright red fruits that burst with orange berries in the fall.



* **Tree Trust Trees**