

Children's Wellbeing

The Metro Public Health Department (MPHD) is committed to improving the health and wellbeing of Davidson County's children.

Prenatal Care and Low Birth Weight

Maternal behaviors such as late initiation of prenatal care, smoking, and improper management of medical conditions can lead to poor birth outcomes such as low birth weight.

- Approximately 83.5% of women with live births received prenatal care in 2010, but only slightly over 55% of women entered prenatal care during the first trimester. Hispanic women have a lower rate of first trimester prenatal care initiation compared to non-Hispanic whites and blacks.
- Non-Hispanic black infants are 1.8 times more likely to be born low birth weight than non-Hispanic white infants.
- The overall low birth weight rate has remained relatively stable since 2006.
- Davidson County has a low birth weight rate (8.7) comparable to the state rate (9).

Preventable Deaths

In Davidson County, all deaths to children younger than 18 years of age are reviewed.

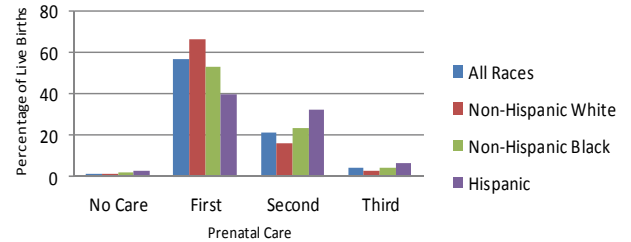
- Of the 90 child death cases reviewed in 2010, 43 (47.8%) were deemed preventable.
- The proportion of preventable undetermined deaths increased from 8% to 27.9% between 2009 and 2010. This increase may be due to changes in the classification of sleep-related deaths.
- The leading cause of preventable deaths was unintentional injuries or accidents (39.5%).
- Slightly over 33% of unintentional injuries were due to motor vehicle accidents.

Immunizations

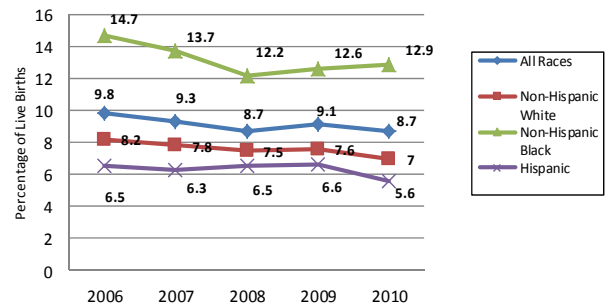
Adequately immunizing 24 month old children prevents debilitating disease.

- After dropping for four consecutive years, immunization rates increased by 14.2% between 2010 and 2011.
- Davidson County 2011 immunization rate was 82.9% compared to state rate, 74.9%.

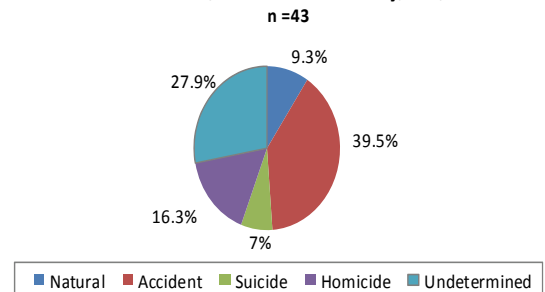
Percent of Live Births to Women who Receive Prenatal Care Prenatal by Race, Davidson County, TN, 2010



Low Birth Weight by Race, Davidson County, TN, 2006-2010



Manner of Death Distribution for Preventable Child Deaths, Davidson County, TN, 2010



Immunization Rates for children 24 months of age, Davidson County, TN, 2006-2011

