

Death Highlights for Davidson County Residents 2008

This brief is designed to provide information regarding deaths in Davidson County for 2008. Highlights are described in bullet points and tables.

Death Highlights 2008 for Davidson County Residents

The number of deaths in 2008 (n=5,071) was 2.3% higher than the number of deaths in 2007 (n=4,956).

Blacks have the highest all-cause AMR* in 2008 (1116.3); 1.3 times higher than whites (850.4), 2.0 times higher than Hispanics (551.7), 2.3 times higher than residents of other races (485.6)

The infant mortality rate** in 2008 (6.7 deaths per 1,000 live births) was 16.3% less than the infant mortality rate in 2007 (8.0).

In 2008, the infant mortality rate for blacks (11.6 deaths per 1,000 live births) was higher than the rate for whites (4.7).

The two leading causes of death in both 2007 and 2008 were heart disease and cancer.

Cancer, stroke, and homicide rates were relatively stable from 2007 to 2008.

From 2007 to 2008, the AMR for heart disease, accidents, chronic lower respiratory infections, Alzheimer's Disease, influenza/pneumonia, and suicide all increased.

The AMR for Diabetes Mellitus decreased 12.1% from 31.5 in 2007 to 27.7 in 2008.

From 2007 to 2008, the AMR of deaths due to influenza and pneumonia increased 17.6% (2007: 16.5, 2008: 19.4).

From 2007 to 2008, the AMR of deaths due to stroke increased 7.9 % (2007: 45.6, 2008: 49.2).

From 2007 to 2008, the AMR of deaths due to chronic lower respiratory infections increased 15.1% (2007: 47.0, 2008: 54.1).

Among cancer deaths in 2008, the leading site of the tumor was in the lungs (AMR 63.2), comprising 31.6% of all malignant cancers.

* AMR—age-adjusted mortality rate

** All Infant Mortality Rates are preliminary, pending verification from the Tennessee Department of Health.

Death Highlights

2007/2008 Statistics for Davidson County Residents

2007

Total Deaths = 4,956
All Cause Age-Adjusted Mortality Rate¹ = 876.5
per 100,000 population

Racial and Ethnic Categories	Number	AMR
White	3,701	830.3
Black	1,202	1082.5
Other	51	396.1
Hispanic	71	605.7
Unknown	0	0.00

Age	Number	Rate ²
<1	80	8.0
1 - 4	11	31.1
5 - 14	10	13.6
15 - 24	63	87.7
25 - 34	112	115.7
35 - 44	215	257.4
45 - 54	462	531.7
55 - 64	641	1062.5
65 - 74	795	2363.9
75 - 84	1,218	5494.7
85+	1,347	14441.9

Leading Causes of Death	Number	AMR
Heart Disease	1,226	217.6
Cancer	1,113	198.2
Accidents	276	49.5
Stroke	266	45.6
Chronic Lower Respiratory		
Infections	260	47.0
Diabetes Mellitus	182	32.5
Alzheimer's Disease	180	31.5
Influenza and Pneumonia	95	16.5
Nephritis	74	12.8
Suicide	64	11.5
Homicide	60	10.4

2008

Total Deaths = 5,071
All Cause Age-Adjusted Mortality Rate¹ = 897.1
per 100,000 population

Racial and Ethnic Categories	Number	AMR
White	3,792	850.4
Black	1,227	1116.3
Other	52	485.6
Hispanic	64	551.7
Unknown	0	0.0

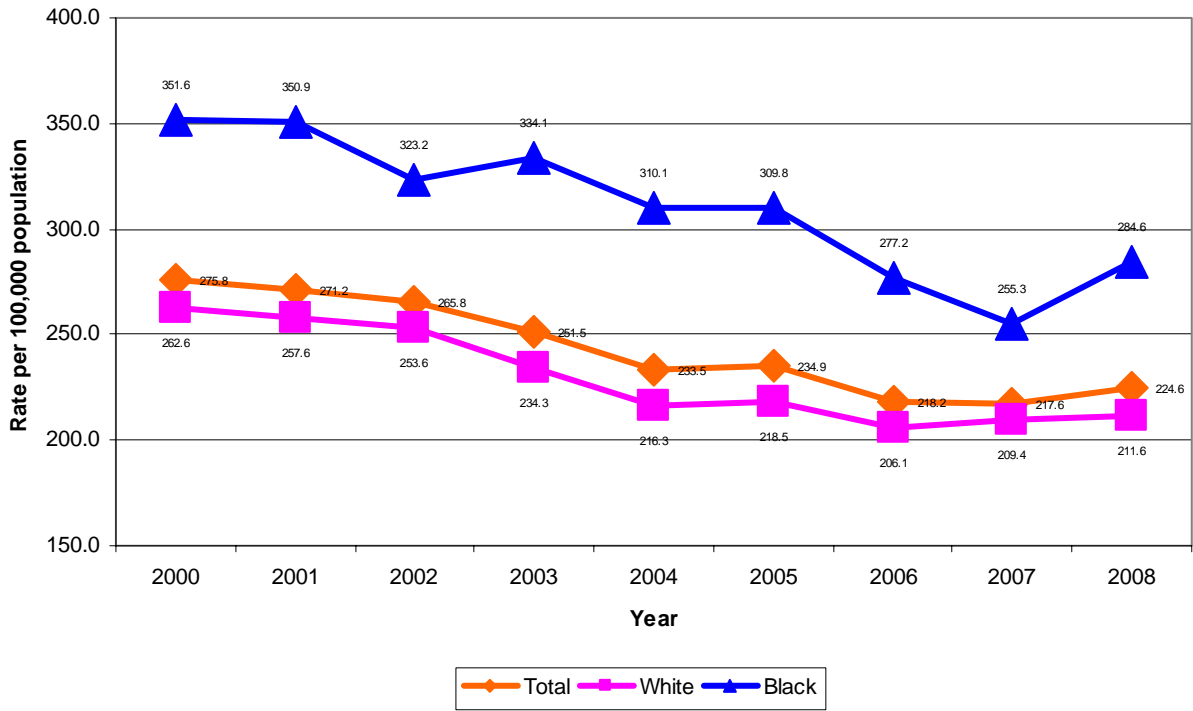
Age	Number	Rate ²
<1	68	6.7
1 - 4	11	30.9
5 - 14	9	12.1
15 - 24	91	128.0
25 - 34	105	108.7
35 - 44	188	224.3
45 - 54	468	534.0
55 - 64	698	1113.3
65 - 74	793	2313.6
75 - 84	1,280	5820.3
85+	1,360	14206.6

Leading Causes of Death	Number	AMR
Heart Disease	1,277	224.6
Cancer	1,116	198.6
Chronic Lower Respiratory		
Infections	294	54.1
Accidents	285	48.9
Stroke	276	49.2
Alzheimer's Disease	201	36.4
Diabetes Mellitus	155	27.7
Influenza and Pneumonia	109	19.4
Suicide	80	13.4
Homicide	74	12.9
Chronic Liver Disease	67	11.5

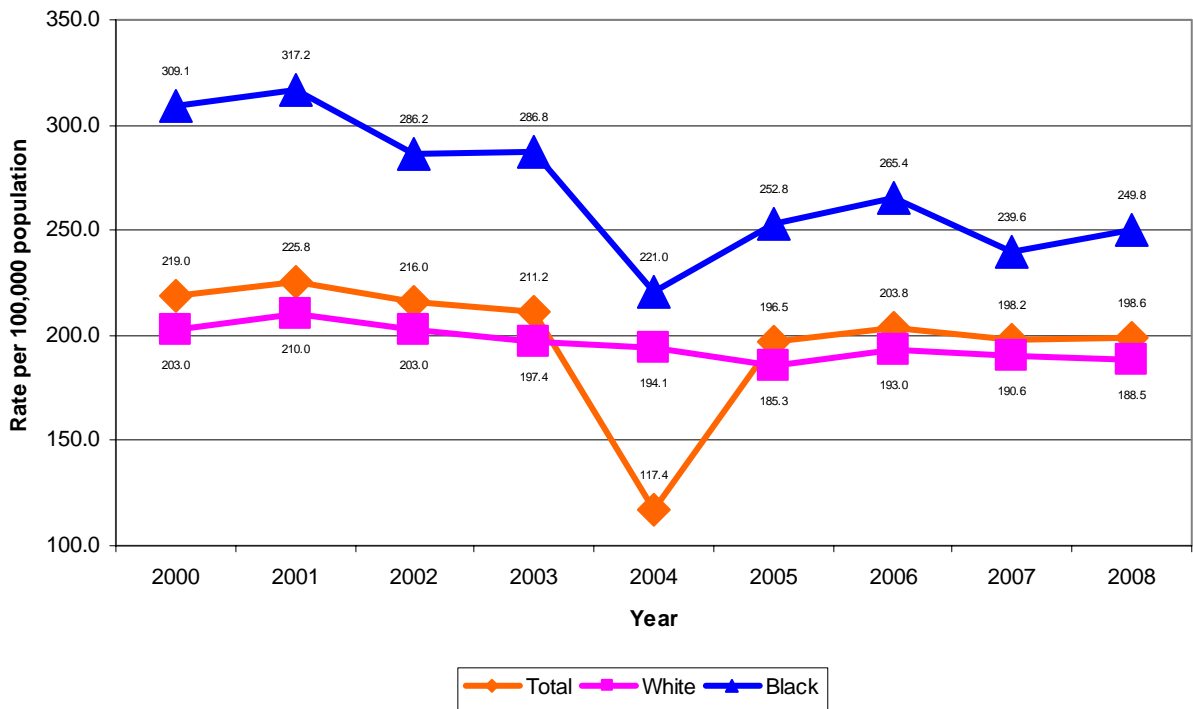
¹Age-Adjusted Mortality rates are calculated using the U.S. 2000 Standard Population.

²Infant mortality rates (<1 year) are per 1,000 live births. All other age-specific mortality rates are per 100,000 population.

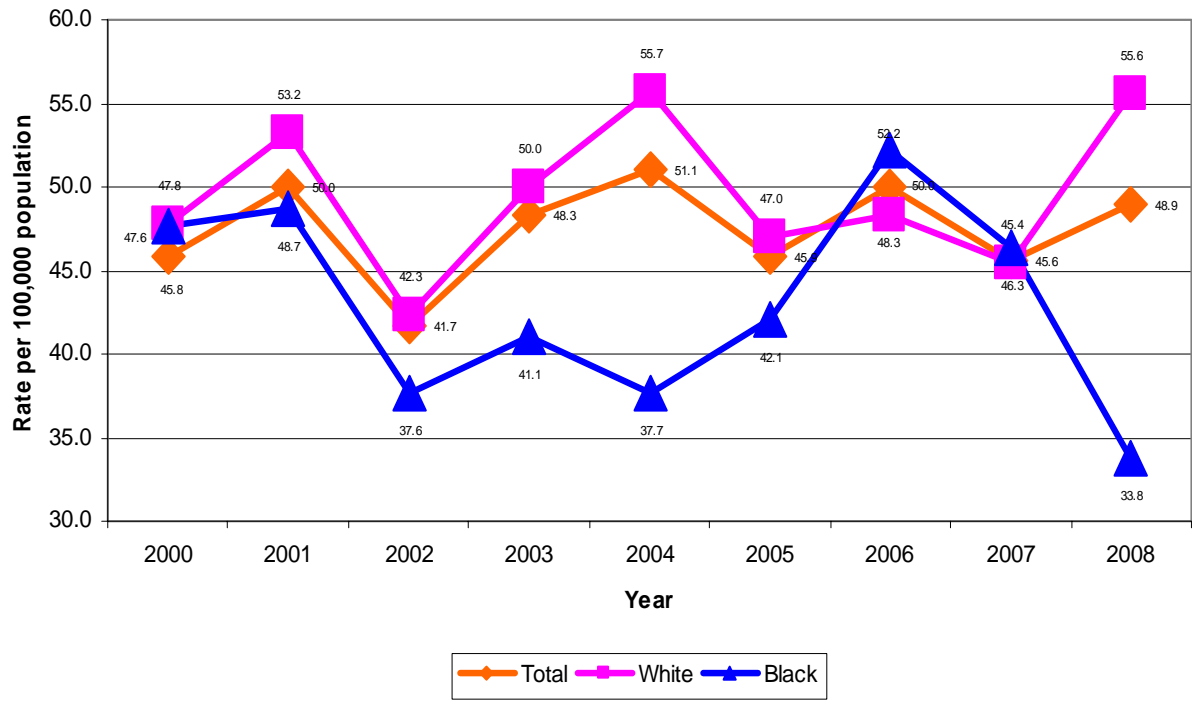
Age-Adjusted Mortality Rates for Heart Disease by Race, Davidson County, TN 2000-2008



Age-Adjusted Mortality Rates for Cancer by Race, Davidson County, TN 2000-2008



Age-Adjusted Mortality Rates for Accidents by Race, Davidson County, TN 2000-2008



Ten Leading Causes of Death with Number of Deaths by Age Category, Davidson County, TN, 2008

Rank	Age 0	Age 1-14	Age 15-24	Age 25-34	Age 35-44	Age 45-54	Age 55-64	Age 65-74	Age 75+	All Ages	Rank
1	Perinatal Conditions 29	Accidents 6	Accidents 32	Accidents 22	Heart Disease 33	Cancer 122	Cancer 228	Cancer 238	Heart Disease 762	Heart Disease 1277	1
2	Congenital Malformation 16	Homicide 3	Homicide 29	Homicide 17	Accidents 30	Heart Disease 110	Heart Disease 171	Heart Disease 183	Cancer 487	Cancer 1116	2
3	Accidents 5		Suicide 11	Cancer 14	Cancer 24	Accidents 52	Stroke 41	Chronic Lower Respiratory Infection 76	Alzheimer's Disease 182	Chronic Lower Respiratory Infection 294	3
4			Heart Disease 5	Suicide 14	HIV 15	HIV 20	Accidents 40	Stroke 43	Chronic Lower Respiratory Infection 168	Accidents 285	4
5			Cancer 2	Heart Disease 12	Homicide 15	Stroke 18	Chronic Lower Respiratory Infection 35	Diabetes 28	Stroke 165	Stroke 276	5
6			Disease of the Circulatory System 2	Diabetes 3	Suicide 12	Hepatitis 18	Diabetes 25	Liver Disease 19	Accidents 80	Alzheimer's Disease 201	6
7				Liver Disease 2	Diabetes 8	Chronic Lower Respiratory Infection 14	Liver Disease 20	Accidents 18	Diabetes 76	Diabetes 155	7
8					Stroke 7	Diabetes 14	Septicemia 16	Alzheimer's Disease 18	Influenza & Pneumonia 75	Influenza & Pneumonia 109	8
9					Liver Disease 7	Suicide 14	Suicide 16	Influenza & Pneumonia 14	Nephritis 35	Suicide 80	9
10					Septicemia 3	Liver Disease and P&I 10	Influenza & Pneumonia 7	Nephritis 11	Parkinsons Disease 35	Homicide 74	10
	All Cause 68	All Cause 20	All Cause 91	All Cause 105	All Cause 188	All Cause 468	All Cause 698	All Cause 793	All Cause 2640	All Cause 5071	

Source: Mortality files provided by Tennessee Department of Health. Analyzed by the Epidemiology Division at Metro Public Health.

Deaths by Race and Sex, Davidson County, 1990-2008

Year	All	White	Black	Male	Female	White Male	White Female	Black Male	Black Female
2008	5,071	3,792	1,227	2,513	2,557	1,842	1,949	641	586
2007	4,956	3,701	1,202	2,331	2,623	1,698	2,005	605	597
2006	5,097	3,765	1,280	2,503	2,593	1,803	1,961	668	612
2005	4,893	3,616	1,224	2,424	2,469	1,729	1,887	660	564
2004	4,850	3,639	1,169	2,364	2,486	1,773	1,866	566	603
2003	5,187	3,868	1,285	2,533	2,654	1,858	2,010	659	626
2002	5,177	3,889	1,236	2,502	2,674	1,849	2,040	619	617
2001	5,125	3,855	1,231	2,436	2,689	1,788	2,067	627	604
2000	5,048	3,747	1,254	2,406	2,642	1,758	1,989	621	633
1999	5,024	3,749	1,253	2,411	2,613	1,782	1,967	620	633
1998	4,896	3,673	1,187	2,447	2,449	1,792	1,881	631	556
1997	5,099	3,815	1,255	2,482	2,617	1,814	2,001	653	602
1996	5,044	3,814	1,197	2,515	2,529	1,859	1,955	635	562
1995	5,037	3,793	1,226	2,509	2,528	1,849	1,944	648	578
1994	4,972	3,808	1,141	2,447	2,525	1,807	2,001	627	514
1993	4,916	3,640	1,261	2,424	2,492	1,770	1,870	647	614
1992	4,629	3,446	1,164	2,334	2,295	1,700	1,746	623	541
1991	4,677	3,564	1,102	2,345	2,332	1,784	1,780	554	548
1990	4,605	3,458	1,129	2,365	2,240	1,733	1,725	620	509

Age-Adjusted Death Rates per 100,000 Population by Race and Sex, Davidson County, 1990-2008

Year	All	White	Black	Male	Female	White Male	White Female	Black Male	Black Female
2008	897	850	1,116	1,144	730	1,073	700	1,490	882
2007	877	830	1,083	1,051	752	986	718	1,368	902
2006	901	846	1,151	1,118	748	1,030	707	1,545	926
2005	880	823	1,119	1,106	719	1,016	687	1,504	862
2004	884	837	1,097	1,099	734	1,058	685	1,288	955
2003	960	900	1,223	1,203	790	1,125	742	1,582	987
2002	971	916	1,213	1,219	807	1,146	765	1,544	1,000
2001	974	917	1,225	1,198	818	1,123	775	1,557	999
2000	970	903	1,240	1,196	812	1,114	753	1,543	1,044
1999	974	906	1,263	1,228	805	1,150	740	1,602	1,043
1998	953	893	1,204	1,248	761	1,160	720	1,646	927
1997	997	929	1,285	1,264	813	1,179	758	1,645	1,042
1996	996	936	1,247	1,291	795	1,216	753	1,628	981
1995	1,006	942	1,299	1,294	804	1,216	754	1,664	1,036
1994	1,014	962	1,243	1,317	815	1,226	788	1,743	931
1993	1,018	935	1,380	1,315	824	1,221	753	1,758	1,124
1992	985	906	1,341	1,311	775	1,197	718	1,844	1,022
1991	1,016	956	1,293	1,356	803	1,300	746	1,633	1,061
1990	1,018	944	1,347	1,387	792	1,275	742	1,891	1,011

Data Source: Tennessee Department of Health.

Epidemiology

The Epidemiology program provides health data, information, and analytical services to the community in order to foster decision-making that results in healthier lives. This program collects, assembles, and analyzes health status and health surveillance data in Nashville. It also publishes reports on the health status of Davidson County residents based on data sources that include birth and death certificates, notifiable disease data, and youth and adult health risk behavior surveys. In addition, the Epidemiology program provides technical support for program evaluation throughout the department.

For a list of publications (reports and data) produced by the program, please direct any questions about the information or services described above to the Epidemiology Division at 615-340-5683. Requests for data or services may also be made by going to our website at health.nashville.gov and clicking the link **Epidemiology Project Request**.