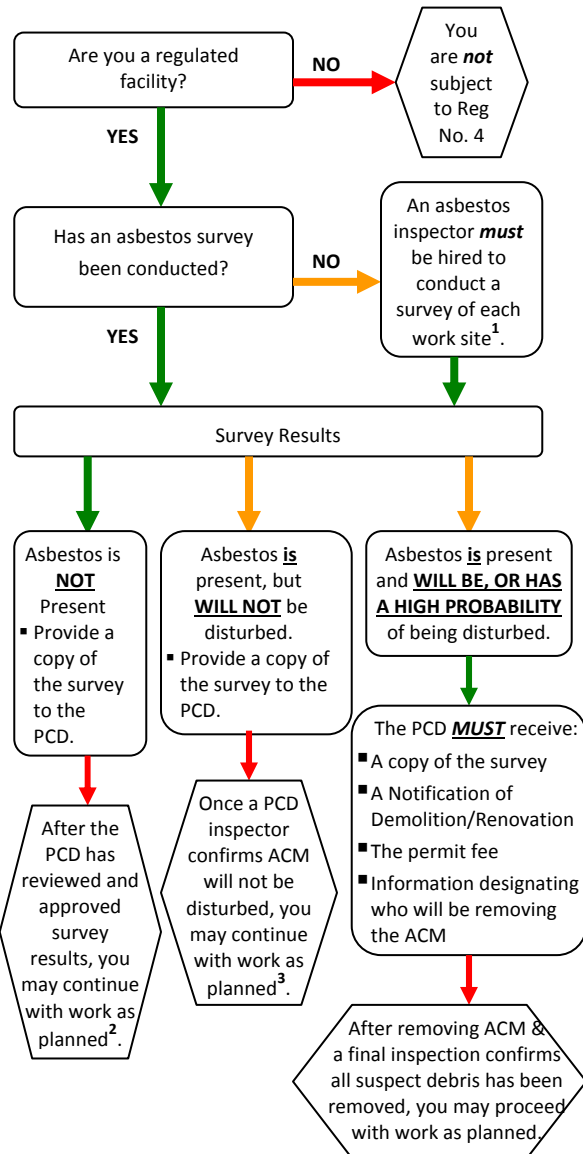


Flowchart for Demolition & Renovation Activities In Accordance With Regulation No. 4



1. The PCD can neither recommend nor endorse asbestos inspectors or abatement contractors. Local companies can be found in the Yellow Pages under "Asbestos Inspection" or "Environmental Consultants".
2. If asbestos containing material is exposed during demolition or renovation activities stop work immediately and contact the PCD.
3. If asbestos containing material is disturbed during demolition or renovation activities, stop work immediately and contact the PCD.

CONTACT INFORMATION:



Metro Public Health Dept
Nashville/Davidson County

Pollution Control Division
311 23rd Ave North
Nashville, TN 37203
Phone (615) 340-5653
Fax (615) 340-2142

Website:

<http://health.nashville.gov/ENV/AIRPOLLUTION.htm>

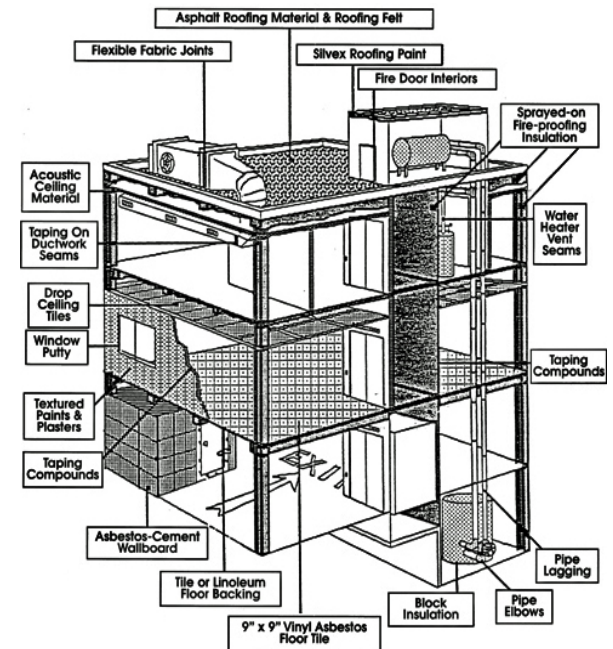
DISCLAIMER:

This brochure is intended to serve as an overview of the Nashville, Davidson County, Tennessee asbestos regulations regarding demolition/renovation activities. It is the responsibility of the property owner/operator to be aware of all local regulations before beginning any demolition/renovation activity. Noncompliance will subject your facility to potential enforcement actions including, but not limited, to a **monetary penalty of up to \$25,000 per day for each violation.**

NASHVILLE, DAVIDSON COUNTY, TN

ASBESTOS INFORMATION OUTREACH:

Standards for Demolition & Renovation



ASBESTOS ABATEMENT

WHO REGULATES ASBESTOS EMISSIONS IN DAVIDSON COUNTY?

The Pollution Control Division (PCD), of the Metro Public Health Department, is the asbestos enforcement agency for Nashville, Davidson County, Tennessee. Inspectors implement local regulations, in accordance with the Clean Air Act, to ensure appropriate control of air contaminants across the county.

The Metro Public Health Department, Pollution Control Division's Regulation No. 4, "Regulations for Hazardous Air Pollutants," Section 4-7 "Emission Standards for Asbestos," outlines the regulatory requirements for asbestos demolition and renovation activities.

WHAT FACILITIES ARE REGULATED?

- institutional
- commercial
- public
- industrial
- residential dwellings:
 - consisting of five or more dwelling units
 - part of a larger installation (ex. military base, company housing, college/university)
 - part of a commercial or developmental project (ex. urban renewal project, highway construction, shopping mall)
- under the control of the same owner/operator and/or part of the same renovation or demolition project (regardless of building proximity)
- intentionally burned for training
- previously regulated
- buildings containing:
 - apartments
 - lofts
 - condominiums

WHAT BUILDING MATERIALS COULD POTENTIALLY CONTAIN ASBESTOS?

- spray-applied fireproofing
- spray-applied/textured ceiling
- acoustical products
- ceiling tiles
- electrical panels
- joint compounds
- millboard
- floor tile & mastic
- linoleum/sheet vinyl & backing
- pipe & boiler insulation
- cement pipe & fittings
- paper tape
- HVAC insulation
- flexible fabric ductwork connectors
- cement pipe & siding panels
- roofing felts
- roofing shingles & tiles
- base flashing

HOW CAN I DETERMINE IF SUSPECT BUILDING MATERIAL CONTAINS ASBESTOS?

Prior to beginning demolition or renovation activities, each facility must be surveyed for the presence of asbestos containing material (ACM) by an asbestos inspector. The inspector will complete a visual examination and collect samples for lab analysis.



After analysis, you should receive a survey detailing examination and laboratory results, as well as locations and quantities of ACM.

The collection and analysis of suspect material is the ONLY way to determine if asbestos is present on the premises.

WHAT DO I DO WITH THE TEST RESULTS IF...

ASBESTOS IS NOT PRESENT?

- Provide a copy of the asbestos survey to the PCD to guarantee all locations, in the planned demolition/renovation, have been tested and are free of asbestos.

ASBESTOS IS PRESENT?

- Provide a copy of the asbestos survey to the PCD so an inspector can contact you for supplementary information.
- ACM must be removed from the facility if it will be or has a high probability of being disturbed during demolition/renovation activities. ACM can only be removed by an authorized representative, trained in the provisions of Regulation No. 4.
- The owner/operator of a demolition or renovation activity must submit a **Notification of Demolition/Renovation and permit fee** to the PCD, postmarked ten (10) working days prior to any activity which may disturb ACM.
- Once the Notification of Demolition/Renovation has been reviewed and approved, the PCD will issue an Asbestos Removal Permit.

WHAT IS A WASTE SHIPMENT RECORD?

A Waste Shipment Record (WSR) documents the movement and ultimate disposition of asbestos containing waste material. The owner/operator of a facility must receive a WSR within **thirty-five (35)** days following the removal of ACM from the premises. If a WSR is not obtained within **forty-five (45)** days, the owner/operator must notify the PCD, so additional enforcement actions can be taken.

WILL INSPECTIONS BE CONDUCTED THROUGHOUT ASBESTOS REMOVAL?

The PCD will conduct **periodic inspections** before, during, and after asbestos removal. After a final visual inspection has confirmed all ACM and suspect debris has been removed, you may proceed with demolition/renovation activities.

