

23 Circuit Court Clerk - At a Glance

Mission The mission of the Circuit Court Clerk's Office is to diligently and professionally serve the needs of the Courts, legal community and citizens of Davidson County, Tennessee, through ethical values, personal service, integrity, transparency, and technology to achieve an unmatched level of efficiency and customer satisfaction.

Budget Summary

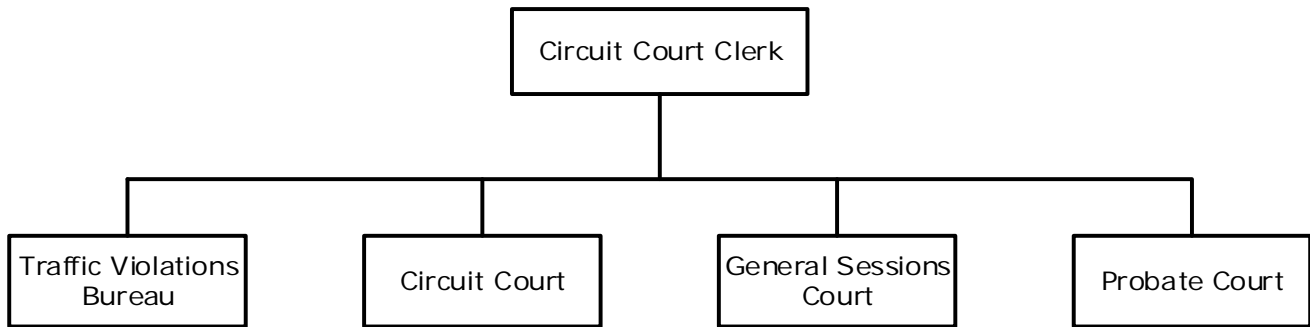
	<u>2018-19</u>	<u>2019-20</u>	<u>2020-21</u>
Expenditures and Transfers:			
GSD General Fund	\$ 3,345,200	\$ 3,465,400	\$ 3,446,600
Total Expenditures and Transfers	<u>\$ 3,345,200</u>	<u>\$ 3,465,400</u>	<u>\$ 3,446,600</u>
Revenues and Transfers:			
Program Revenue			
Charges, Commissions, and Fees	\$ 2,000,000	\$ 1,000,000	\$ 780,000
Other Governments and Agencies	0	0	0
Other Program Revenue	0	0	0
Total Program Revenue	<u>\$ 2,000,000</u>	<u>\$ 1,000,000</u>	<u>\$ 780,000</u>
Non-program Revenue			
Transfers From Other Funds and Units	\$ 3,828,400	\$ 2,806,200	\$ 2,682,200
	0	0	0
Total Revenues and Transfers	<u>\$ 5,828,400</u>	<u>\$ 3,806,200</u>	<u>\$ 3,462,200</u>
Expenditures Per Capita	\$ 4.84	\$ 5.00	\$ 4.97

Positions Total Budgeted Positions 44 44 44

Contacts Circuit Court Clerk: Richard Rooker email: rickyrooker@jis.nashville.org
 Financial Manager: Randi Semrick email: randisemrick@jis.nashville.org
 1 Public Square, Suite 302 37201 Phone: 615-862-5181

23 Circuit Court Clerk - At a Glance

Organizational Structure



Programs

Administrative

Non-allocated Financial Transactions

Circuit Court Clerk's Office and General Sessions Civil Division Office

Circuit Court Clerk's Office and General Sessions Civil Division Office

Probate Court Clerk's Office

Probate Court Clerk's Office

Traffic Violations Bureau

Traffic Violations Bureau

23 Circuit Court Clerk - At a Glance

Budget Changes and Impact Highlights

Recommendation		Impact	
Non-allocated Financial Transactions			
Longevity	GSD	\$(35,600)	Elimination of longevity pay, with minimal impact on performance
Internal Service Charges*	GSD	(6,400)	Delivery of centrally provided services including information systems, fleet management, radio, and surplus property
Pay Plan Adjustment	GSD	23,200	Supports the hiring and retention of a qualified workforce
General Services District Total		\$(18,800)	
TOTAL		\$(18,800)	

* See Internal Service Charges section for details