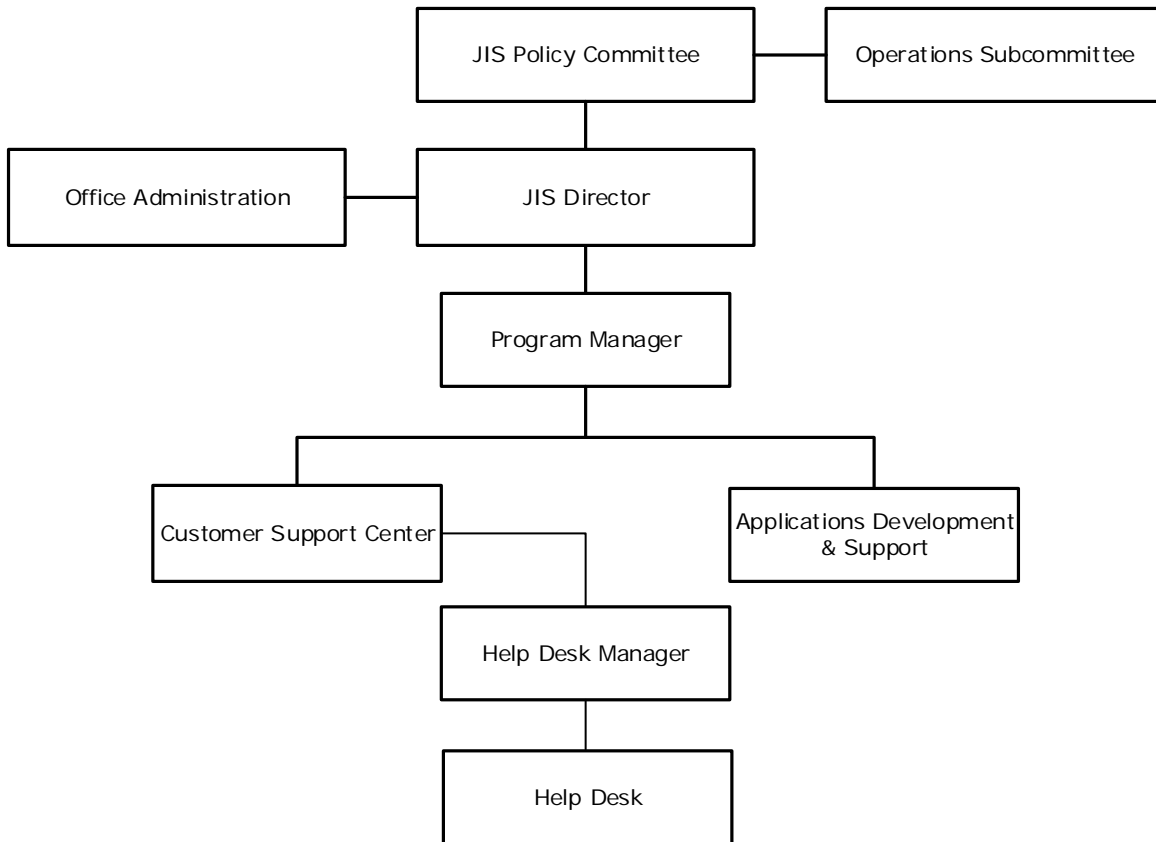




# 29 Justice Integration Services - At a Glance

## Organizational Structure



## Programs

### Administrative

Executive Leadership  
Non-allocated Financial Transactions

### Applications

Applications

### Customer Support

Customer Support

# 29 Justice Integration Services - At a Glance

## Budget Changes and Impact Highlights

Recommendation			Impact
<b>Software License</b>			
Increase for Software Maintenance	GSD	\$42,000	Increase in funding necessary to provide continuing support for critical infrastructure components and systems for key Metro court applications
<b>Non-allocated Financial Transactions</b>			
Internal Service Charges*	GSD	88,000	Delivery of centrally provided services including information systems, fleet management, radio, and surplus property
Longevity	GSD	(9,600)	Elimination of longevity pay, with minimal impact on performance
Pay Plan Adjustment	GSD	19,700	Supports the hiring and retention of a qualified workforce
<b>General Services District Total</b>		\$140,100	
<b>TOTAL</b>		\$140,100	

\* See Internal Service Charges section for details