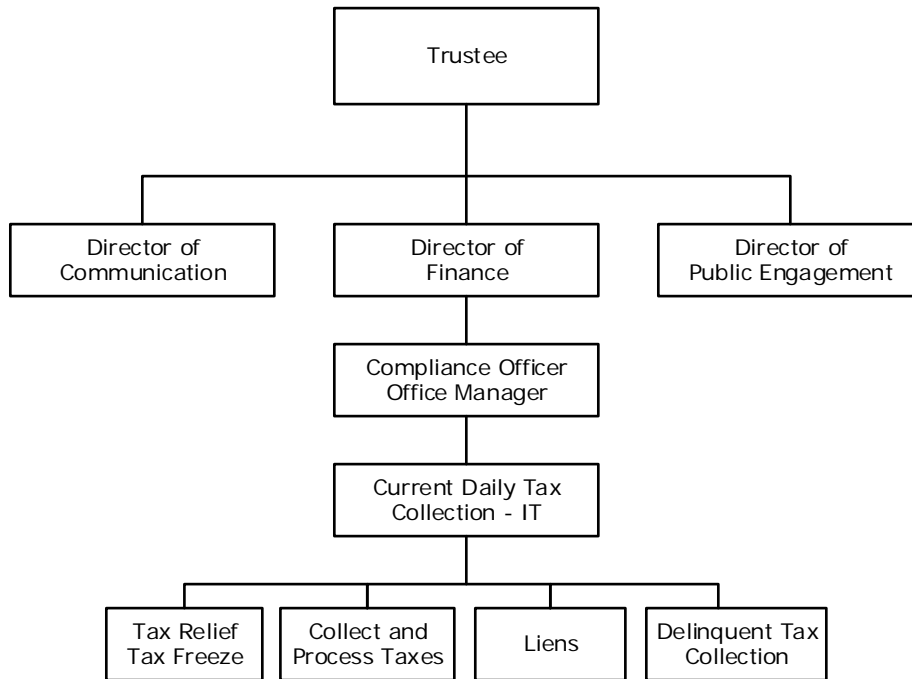


17 Trustee - At a Glance

Mission	To collect Davidson County's Real Property Tax, Public Utility Tax, Personal Property Tax, Central Business Improvement District Tax, Gulch Business Improvement District Tax, South Nashville Business Improvement District (SONA) Tax and Vegetation Liens each year; and administer the Tax Relief Program for the State of Tennessee and Metro Government, and the Davidson County Tax Freeze Program.		
Budget Summary	<u>2018-19</u>	<u>2019-20</u>	<u>2020-21</u>
Expenditures and Transfers:			
GSD General Fund	\$ 2,321,600	\$ 2,367,100	\$ 2,608,600
Total Expenditures and Transfers	<u>\$ 2,321,600</u>	<u>\$ 2,367,100</u>	<u>\$ 2,608,600</u>
Revenues and Transfers:			
Program Revenue			
Charges, Commissions, and Fees	\$ 0	\$ 0	\$ 0
Other Governments and Agencies	0	0	0
Other Program Revenue	0	0	0
Total Program Revenue	\$ 0	\$ 0	\$ 0
Non-program Revenue	\$ 0	\$ 0	\$ 0
Transfers From Other Funds and Units	0	0	0
Total Revenues and Transfers	<u>\$ 0</u>	<u>\$ 0</u>	<u>\$ 0</u>
Expenditures Per Capita	\$ 3.36	\$ 3.42	\$ 3.76
Positions	Total Budgeted Positions	28	28
Contacts	Trustee: Erica Gilmore Financial Manager: Eugene Hampton 700 2nd Avenue South, Suite 220 37210	email: erica.gilmore@nashville.gov email: eugene.hampton@nashville.gov Phone: 615-862-6330	

17 Trustee - At a Glance

Organizational Structure



Programs

Administration

Administration
Non-allocated Financial Transactions

17 Trustee - At a Glance

Budget Changes and Impact Highlights

Recommendation			Impact
Non-allocated Financial Transactions			
Internal Service Charges*	GSD	\$251,400	Delivery of centrally provided services including information systems, fleet management, radio, and surplus property
Longevity	GSD	(21,300)	Elimination of longevity pay, with minimal impact on performance
Out of Town Travel	GSD	(1,100)	Elimination of out of town travel, with limited impact on performance
Pay Plan Adjustment	GSD	12,500	Supports the hiring and retention of a qualified workforce
General Services District Total		\$241,500	
TOTAL		\$241,500	

* See Internal Service Charges section for details