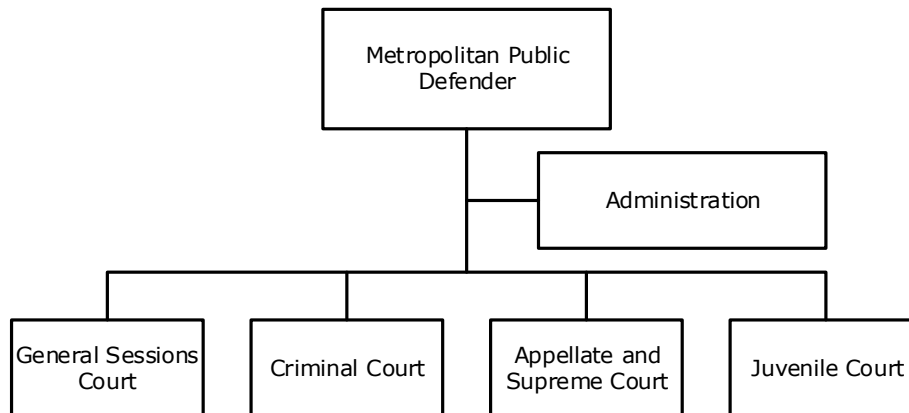


21 Public Defender - At a Glance

Mission	To provide zealous representation and to fight for equal justice for the indigent accused.		
Budget Summary			
	2016-17	2017-18	2018-19
Expenditures and Transfers:			
GSD General Fund	\$ 8,135,400	\$ 8,560,800	\$ 8,482,100
Total Expenditures and Transfers	<u>\$ 8,135,400</u>	<u>\$ 8,560,800</u>	<u>\$ 8,482,100</u>
Revenues and Transfers:			
Program Revenue			
Charges, Commissions, and Fees	\$ 0	\$ 0	\$ 0
Other Governments and Agencies	2,221,900	2,330,800	2,379,700
Other Program Revenue	<u>0</u>	<u>0</u>	<u>0</u>
Total Program Revenue	\$ 2,221,900	\$ 2,330,800	\$ 2,379,700
Non-program Revenue	\$ 0	\$ 0	\$ 0
Transfers From Other Funds and Units	<u>0</u>	<u>0</u>	<u>0</u>
Total Revenues and Transfers	<u>\$ 2,221,900</u>	<u>\$ 2,330,800</u>	<u>\$ 2,379,700</u>
Expenditures Per Capita	\$ 11.98	\$ 12.51	\$ 12.27
Positions	Total Budgeted Positions	90	92
Contacts	Public Defender: Martesha Johnson Financial Manager: Annette Crutchfield 404 James Robertson Parkway Parkway Towers, Suite 2022 37219	email: martesha.johnson@nashville.gov email: annettecrutchfield@jis.nashville.org Phone: 615-862-5730	

21 Public Defender - At a Glance

Organizational Structure



Programs

Administration Team

Administration Team
Non-allocated Financial Transactions

Appellate Court Team

Appellate Court Team

Criminal Court Team

Criminal Court Team

General Sessions Team

General Sessions Team

Juvenile Court Team

Juvenile Court Team

21 Public Defender – At a Glance

Budget Changes and Impact Highlights

Recommendation			Impact
Non-allocated Financial Transactions			
Internal Service Charges*	GSD	\$6,000	Delivery of centrally provided services including information systems, fleet management, radio, and surplus property
Pay Plan Adjustment	GSD	137,900	Supports the hiring and retention of a qualified workforce
Budget Savings	GSD	(222,600)	Savings target assigned equitably to the Public Defender’s Office in supporting Metro Nashville’s long-term financial strength
General Services District Total		(\$78,700)	
TOTAL		(\$78,700)	

* See Internal Service Charges section for details