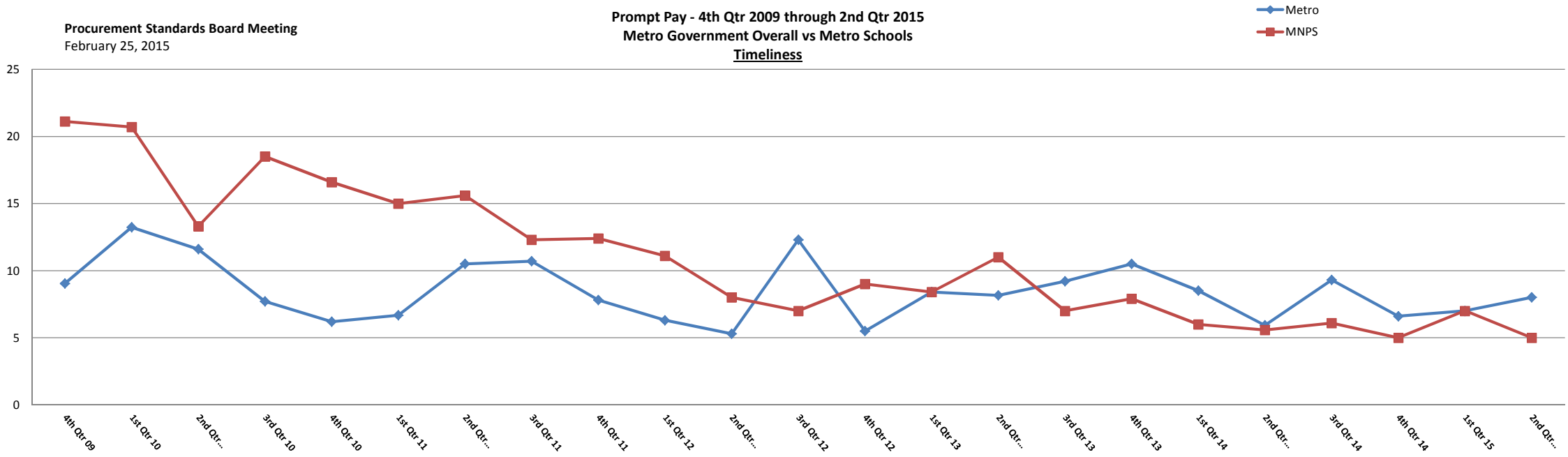


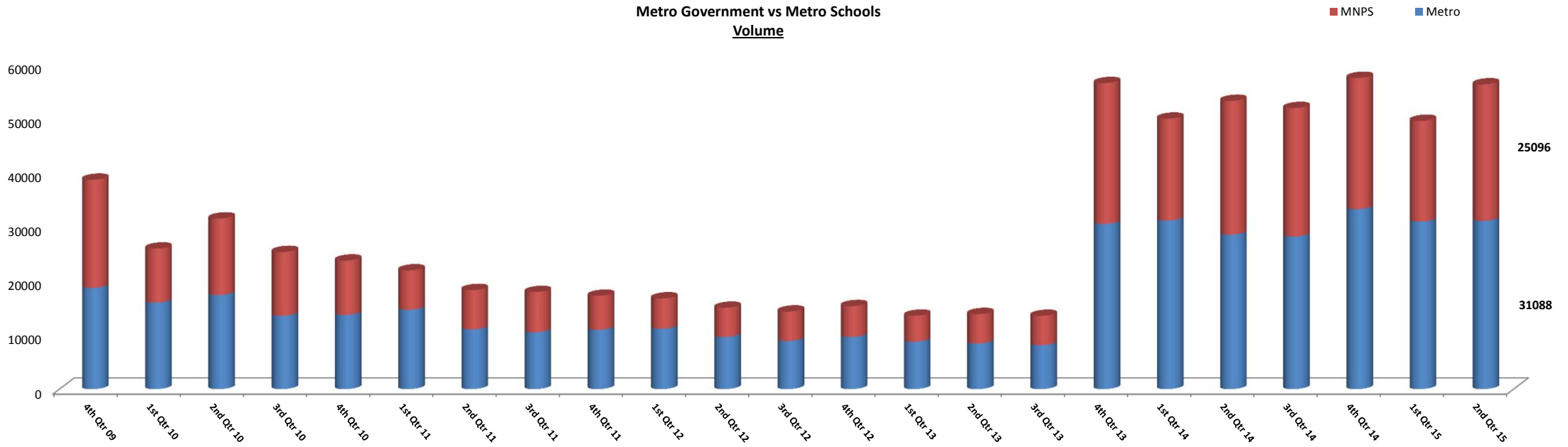
Prompt Pay - 4th Qtr 2009 through 2nd Qtr 2015  
Metro Government Overall vs Metro Schools

Timeliness



Prompt Pay - 4th Qtr 2009 through 2nd Qtr 2015  
Metro Government vs Metro Schools

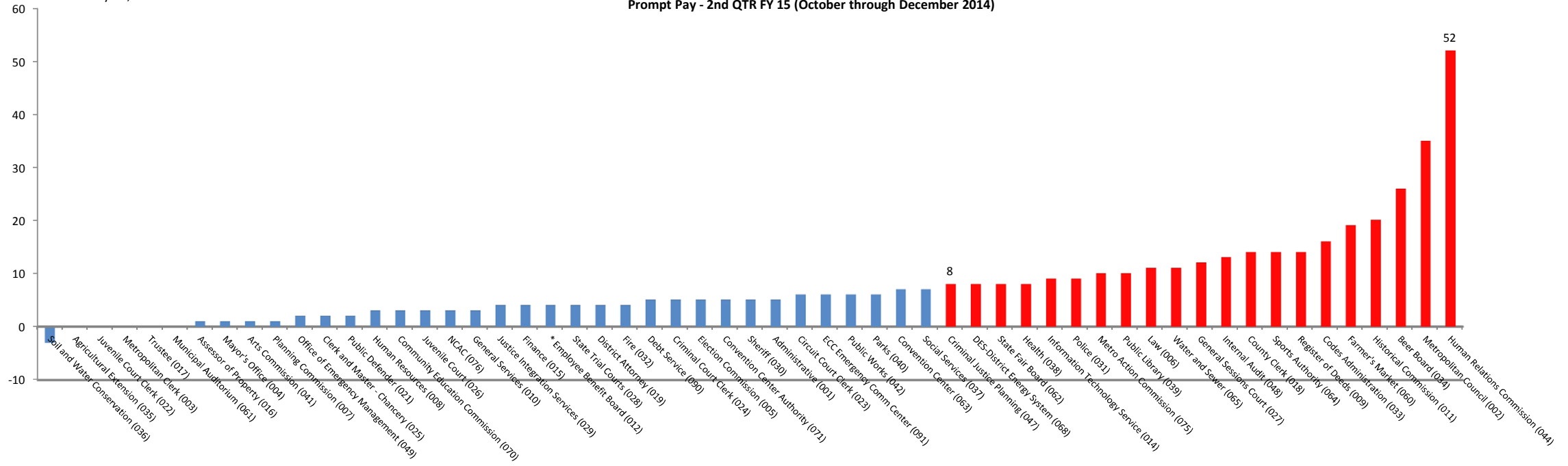
Volume



**Procurement Standards Board**  
February 25, 2015

Metro Nashville Government  
**Prompt Pay - 2nd QTR FY 15 (October through December 2014)**

**AVG Days Late**



Metro Nashville Government  
**PromptPay - 1st Qtr 2015 (July through September 2014)**  
**Average Days Late - By Department**

**Avg Days Late**

