

Metro Nashville
DISTRICT ENERGY SYSTEM



DES Advisory Board Meeting
First Quarter FY12
November 17, 2011



Agenda

1. Call to Order
2. Review & Approval of Previous Meeting Minutes
3. Customer Sales
4. Review of DES Contractor Performance
5. Natural Gas Purchasing Status
6. FY12 Costs to Date
7. Capital Projects Review & Status Report Update
8. Thermal Storage & Time of Use Rates
9. MCCC Expansion Update
10. Potential New Customers
11. Other Board Member Items
12. Adjourn



1. Call to Order

*2. Review and Approval of
Previous Meeting Minutes*



3. Customer Sales

- Table 3: Customer Cost Comparison
- Figure 3A: CHW Sales Comparison
- Figure 3B: Steam Sales Comparison

Metro Nashville

DISTRICT ENERGY SYSTEM



*Summary Table 3: Customer Cost Comparison
for the Previous 12 Months*

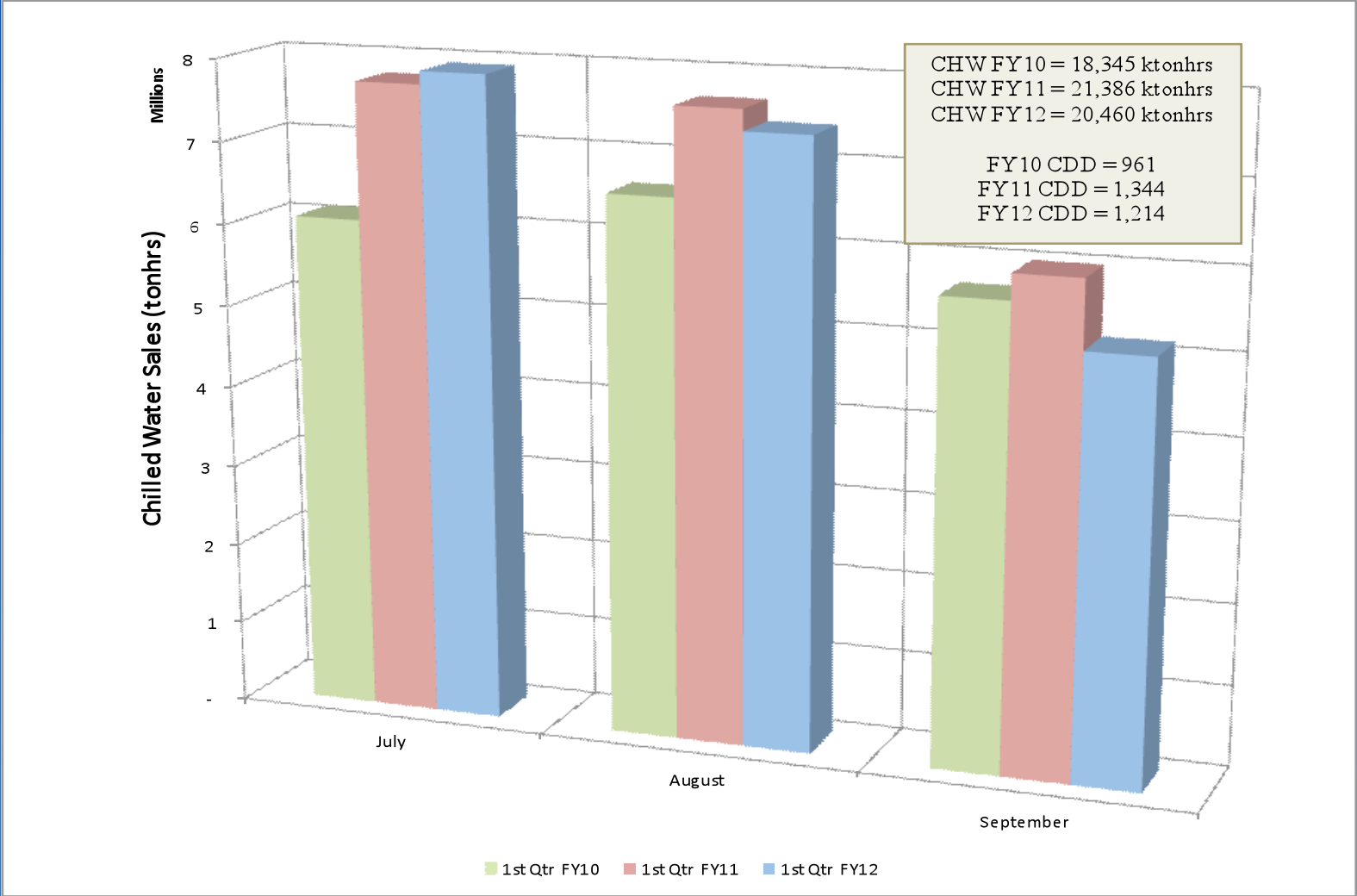
		Steam - Rolling 12 Month			Chilled Water - Rolling 12 Month		
		Oct 2009 - Sept 2010	Oct 2010 - Sept 2011	% Diff.	Oct 2009 - Sept 2010	Oct 2010 - Sept 2011	% Diff.
Private	Cost	\$ 1,638,529	\$ 1,611,911	-1.62%	\$ 3,145,699	\$ 3,318,769	5.50%
	Usage (lbs or tonhrs)	78,382,889	78,781,426	0.51%	16,575,558	17,099,377	3.16%
	Unit Cost	\$ 20.90	\$ 20.46	-2.1%	\$ 0.190	\$ 0.194	2.3%
State	Cost	\$ 2,287,456	\$ 2,074,244	-9.32%	\$ 3,364,105	\$ 3,426,692	1.86%
	Usage (lbs or tonhrs)	104,597,343	92,631,933	-11.44%	17,345,335	16,804,270	-3.12%
	Unit Cost	\$ 21.87	\$ 22.39	2.4%	\$ 0.194	\$ 0.204	5.1%
Metro	Cost	\$ 1,937,180	\$ 1,898,623	-1.99%	\$ 3,102,940	\$ 3,290,498	6.04%
	Usage (lbs or tonhrs)	87,881,675	89,651,041	2.01%	18,023,262	19,003,327	5.44%
	Unit Cost	\$ 22.04	\$ 21.18	-3.9%	\$ 0.172	\$ 0.173	0.6%
Aggregate	Cost	\$ 5,885,528	\$ 5,640,798	-4.16%	\$ 10,183,917	\$ 10,633,431	4.41%
	Usage (lbs or tonhrs)	270,874,991	261,111,548	-3.60%	54,314,339	55,191,768	1.62%
	Unit Cost	\$ 21.73	\$ 21.60	-0.6%	\$ 0.187	\$ 0.193	2.75%

*FY09 MFA = \$3,217,986; FY10 MFA = \$2,661,553; FY11 MFA = \$2,444,100; post-True-up; MFA not included in values shown

Metro Nashville DISTRICT ENERGY SYSTEM



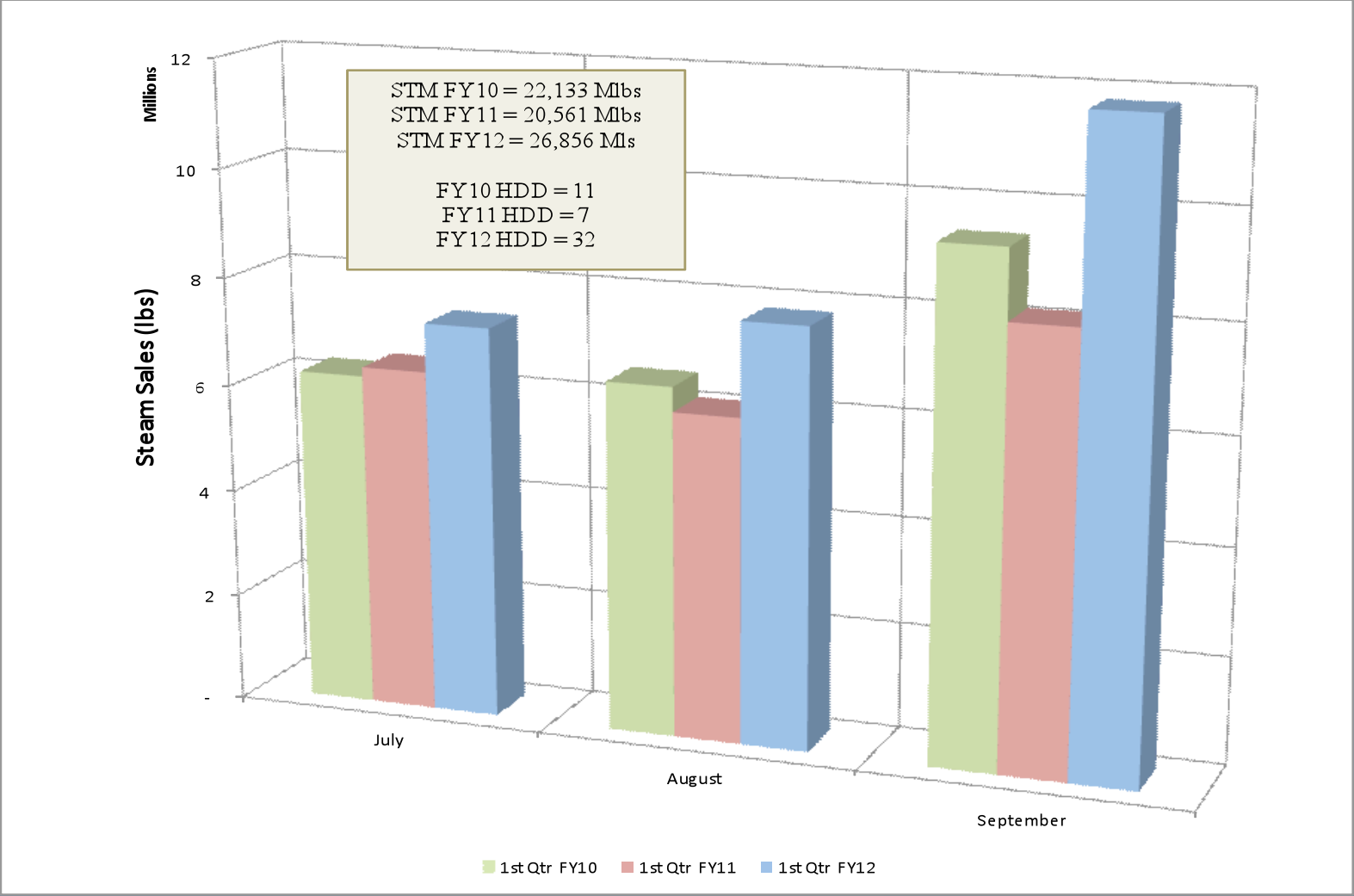
Figure 3A: CHW Sales Comparison



Metro Nashville DISTRICT ENERGY SYSTEM




Figure 3B: Steam Sales Comparison





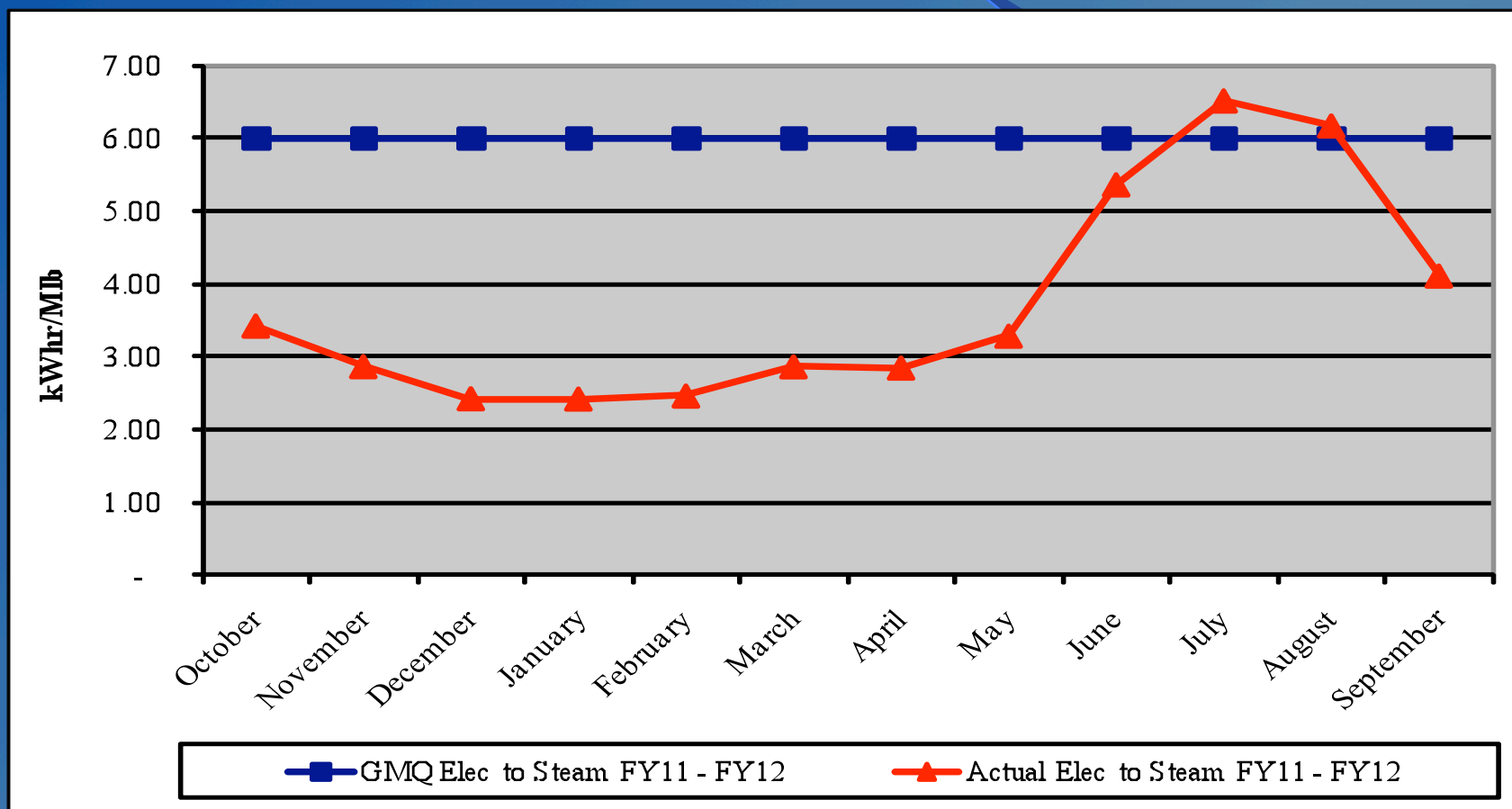
4. Review of DES Contractor Performance

Contractor (CEPS) is in compliance with their contractual obligations for FY12.

-  Excellent Performance – No Improvement Necessary
-  Satisfactory Performance – Some Improvement Could Be Made
-  Poor Performance – Much Improvement Necessary

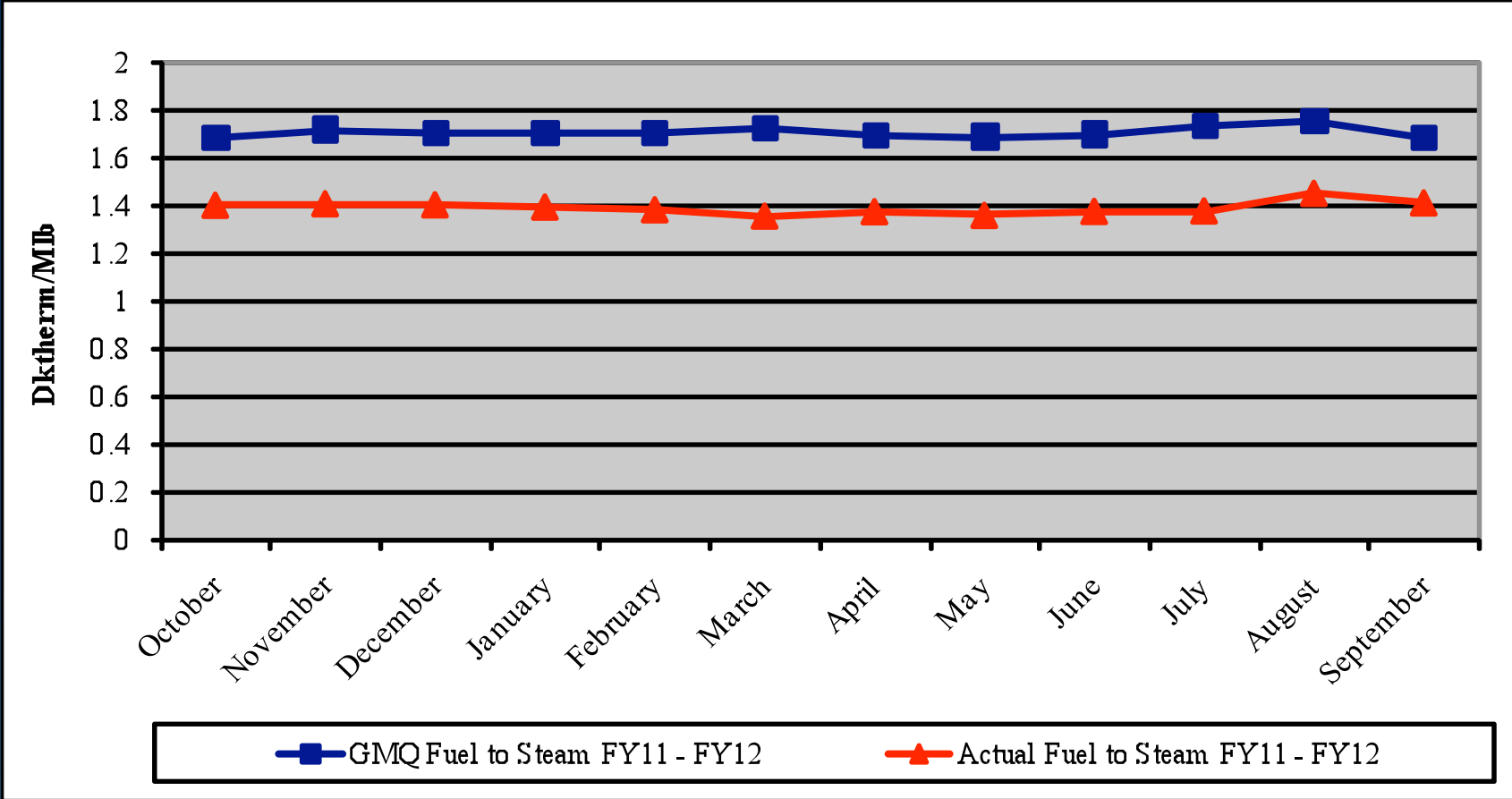


Performance Measurement FY12: Steam Electric Conversion



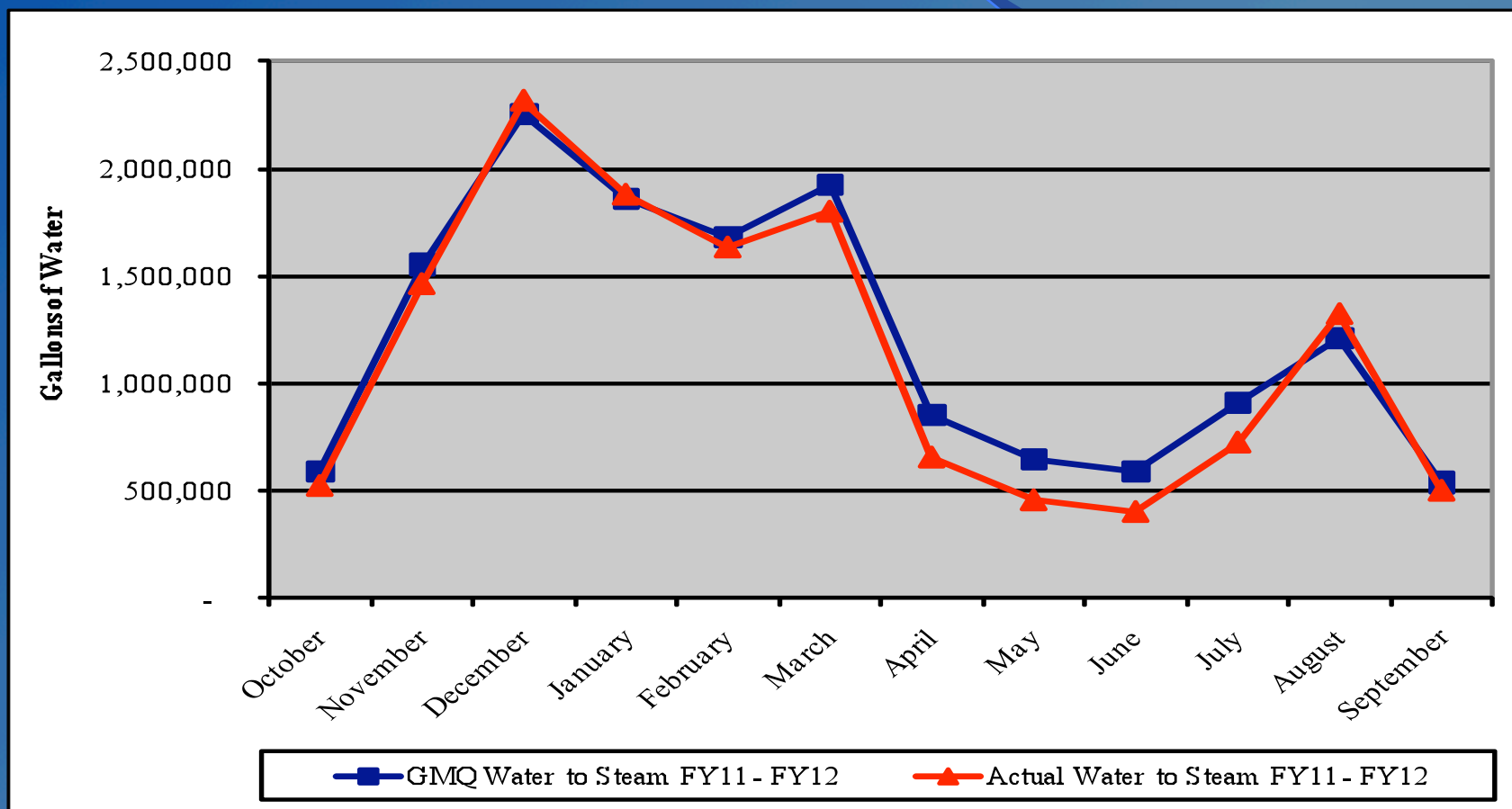


Performance Measurement FY12: Steam Plant Efficiency



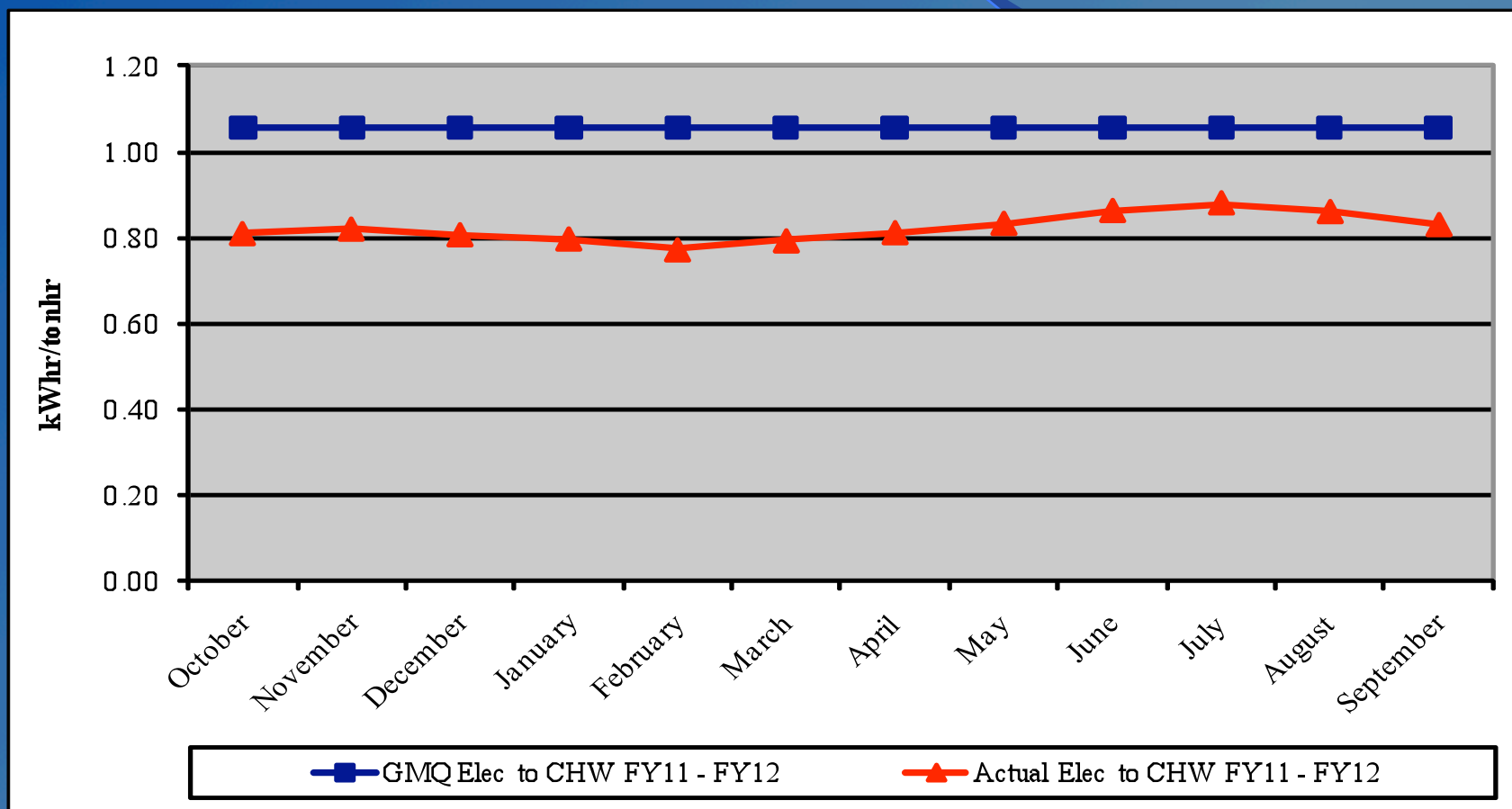


Performance Measurement FY12: Steam Water Conversion





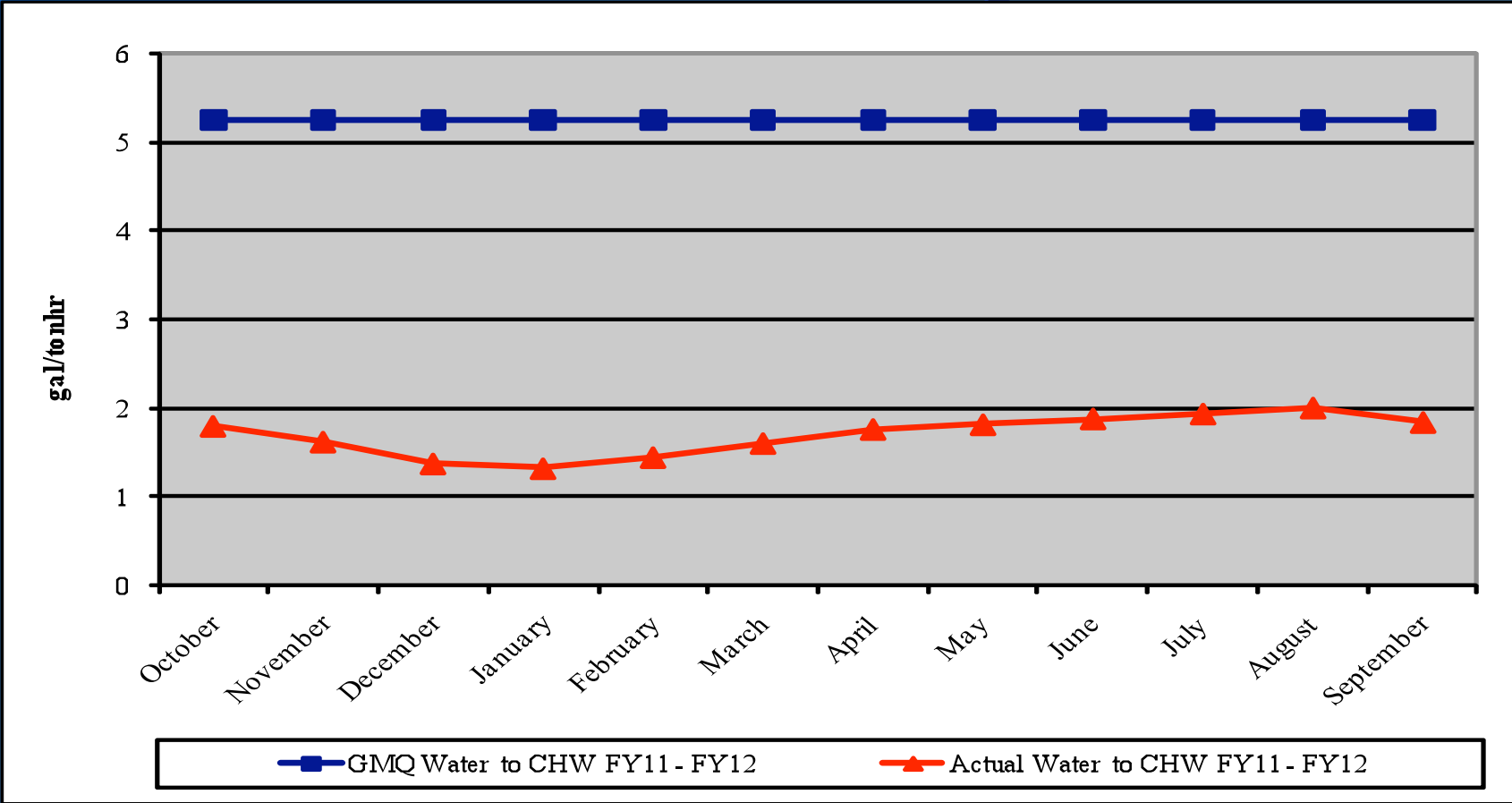
Performance Measurement FY12: CHW Electric Conversion



Metro Nashville DISTRICT ENERGY SYSTEM



Performance Measurement FY12: CHW Water Conversion





Water Treatment

- Steam and Condensate ●
 - Corrosion
 - Iron
 - Hardness
 - Chlorine/Sulfite
- Condensing Water ●
 - Conductivity
 - Biologicals
- Chilled Water ●
 - Hardness
 - Corrosion
 - Biologicals



EGF Walkthrough

- Equipment Maintenance ●
- Operations ●
- Electrical ●
- Housekeeping ●
- Building Structure ●
- Building Exterior and Grounds ●



EDS Walkthrough

- Vault/Tunnel Housekeeping ●
- Maintenance Items
 - Insulation Repair/Replacement ●
 - Water Infiltration (City Water Leak) ●
 - Corrosion of Structural Metal Components ●
- Safety Items ● (DES 080 under construction)



5. Natural Gas Purchasing

- Natural Gas Purchasing Review
 - Table 5: FY12 Gas Spending & Budget Comparison
 - Figure 5: Actual and Projected Gas Cost Comparison for FY12



Table 5: FY12 Gas Spending & Budget Comparison

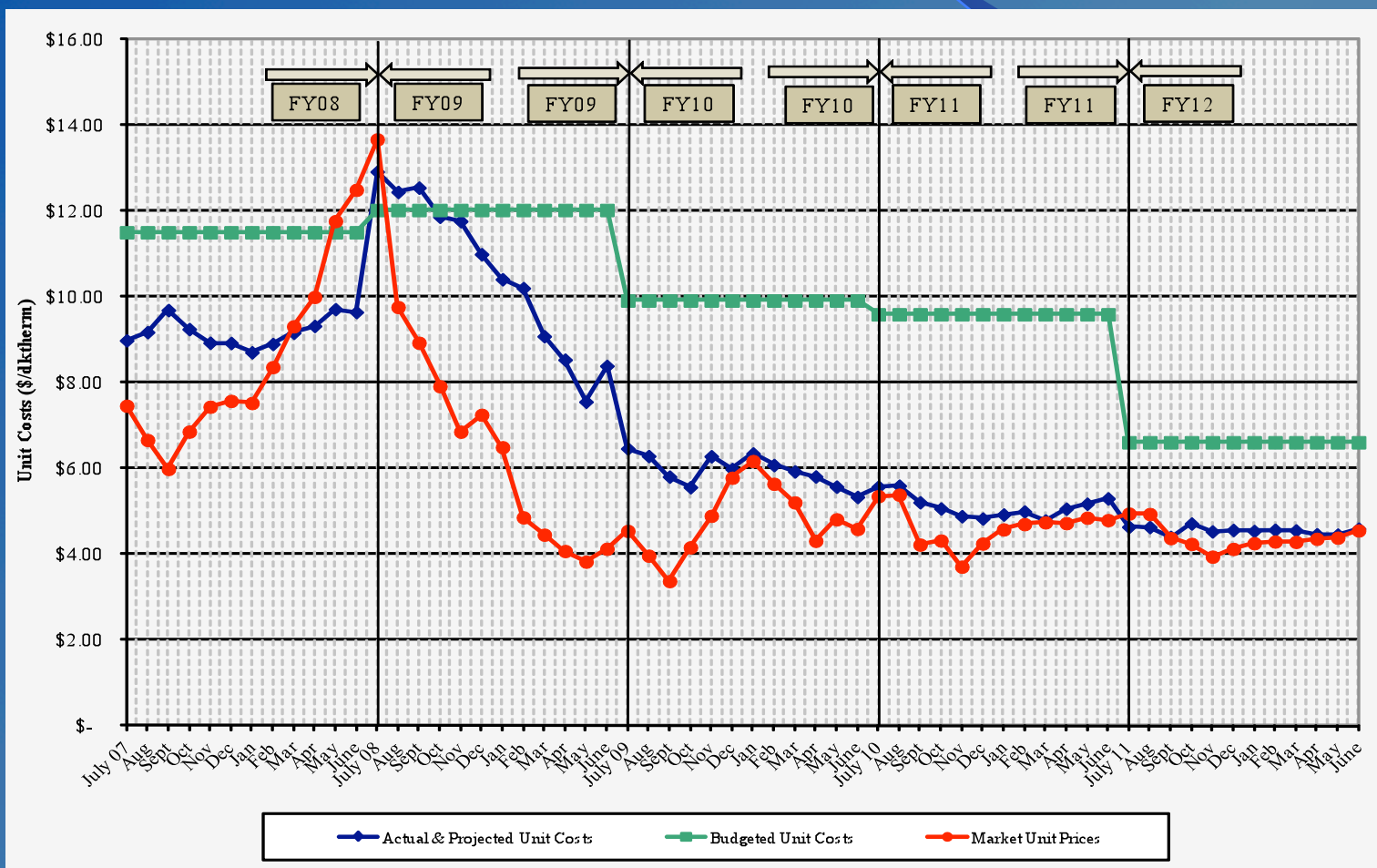
	Actual FY12 To date (Sept 30)	Budget FY12	Percent Difference
Steam Sendout (Mlbs)	43,937	38,073	-15.4%
Fuel Use (Dth) (includes propane)	● 62,017	53,990	-14.9%
Plant Eff (Dth/Mlb)	● 1.411	1.418	0.5%
Total Gas Cost (includes propane)	● \$316,833	\$357,090	11.3%
Unit Cost of Fuel (\$/ Dth)	● \$5.109	\$6.614	22.8%

Excludes consultant fees and FEA

Metro Nashville DISTRICT ENERGY SYSTEM



Figure 5. Actual and Projected Gas Cost Comparison History





6. FY12 Costs to Date

Item	FY11 Actual	FY12 Budget w/MCCC	FY12 Actual	Percent of FY12 Budget
FOC's	\$ 4,129,302	\$ 4,303,100	\$ 1,061,850	24.68%
Pass Throughs				
Non-Energy	\$ 859,795	\$ 1,031,400	\$ 216,270	20.97%
Water/Sewer	\$ 396,869	\$ 597,700	\$ 167,079	27.95%
Natural Gas	\$ 2,496,141	\$ 3,939,300	\$ 321,191	8.15%
Electricity	\$ 4,310,054	\$ 5,192,900	\$ 1,972,256	37.98%
Debt Service	\$ 5,042,150	\$ 5,703,700	\$ 913,174	16.01%
Total Expenses	\$ 17,234,310	\$ 20,768,100	\$ 4,651,820	22.40%
Total Revenues	\$ 15,395,261	\$ 18,405,100	\$ 4,669,068	25.37%
Metro Funding Amount	\$ 1,839,049	\$ 2,363,000	\$ (17,248)	-0.73%



7. Capital Expenditure Update

	Spent to End of FY11	FY12 Spending	Balance to Date (11/09/11)
R&I Projects	\$1,313,613	-\$31,249	\$540,943
2005B Bond	\$8,139,071	\$19,765	\$27,664
2010 Bond	\$1,461,651	\$64,291	\$884,059
MCCC Fund	\$3,856,349	\$389,209	\$4,254,443
Total	\$14,770,684	\$442,015	\$5,707,109



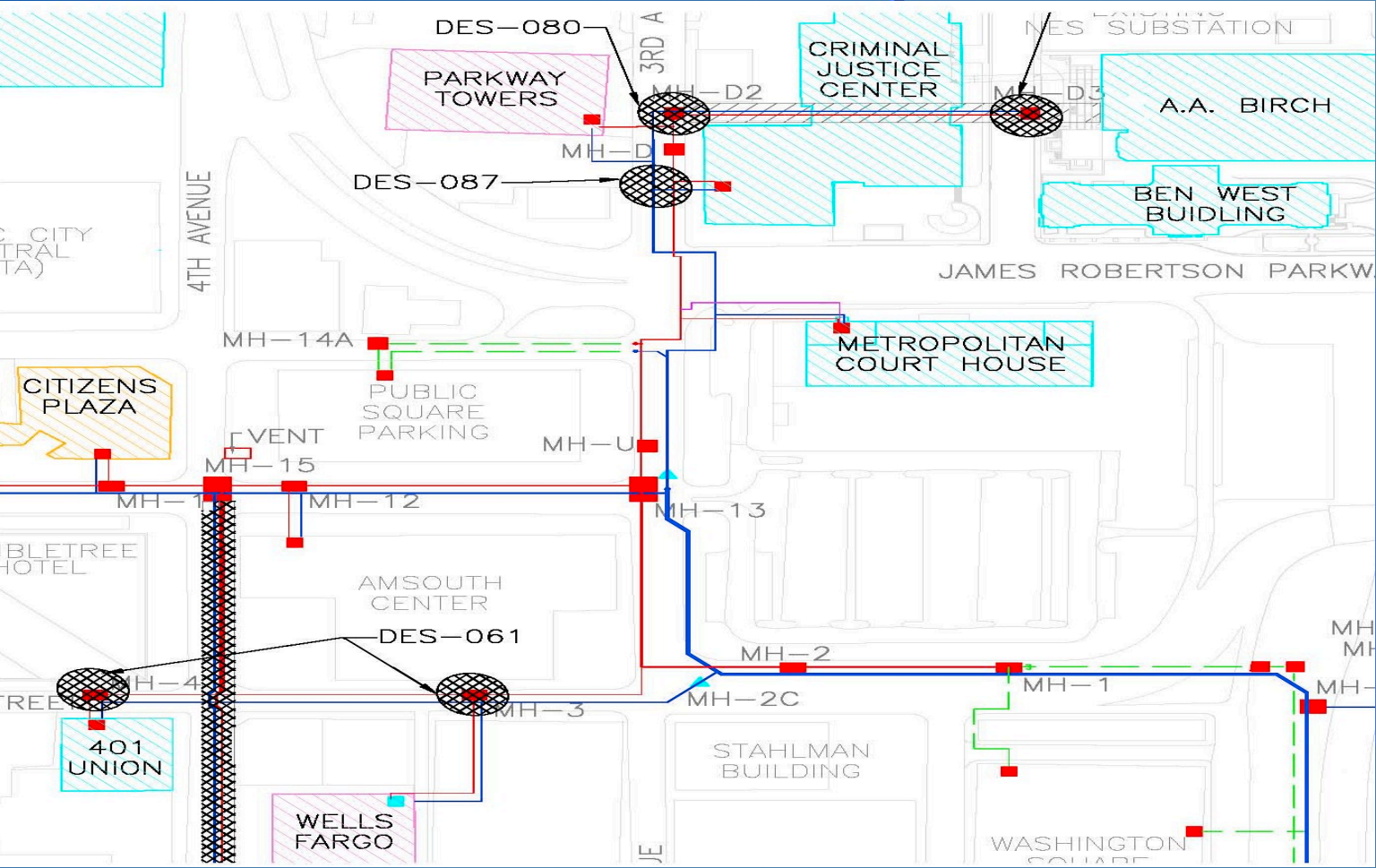
Capital Projects Review

Active Capital Projects

- DES 048: Tunnel Lighting Replacement Phase III – in construction
- DES 061: MH & Tunnel Steel Corrosion Repair & Prevention – in construction/ongoing
- DES 076: MH-S4A State Manhole Rebuild – in construction
- DES 080: Misc. MH & Tunnel Safety Repairs – in construction
- DES 088: Andrew Jackson PRV Control – in construction
- DES 090: MH/Tunnel Insulation - in construction/ongoing
- DES 091: Thermal Storage System – in design/evaluation phase
- DES 092: Sheraton Hotel CHW Pumps – in construction
- DES 093: Manhole 6 Repair and Structural Rehabilitation – in construction
- DES 094: Molloy Street Exploratory Dig – in construction



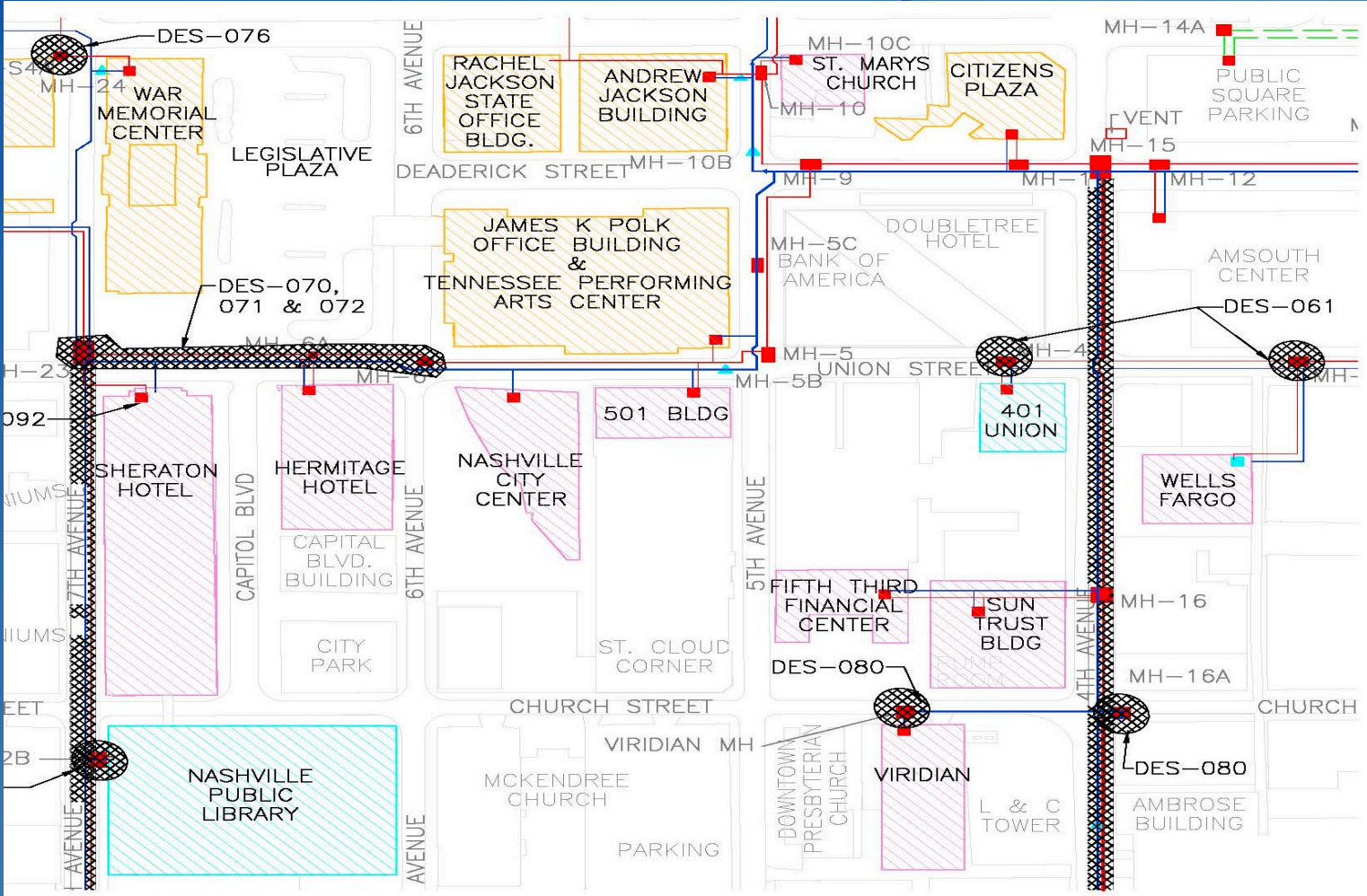
Active Capital Projects



Metro Nashville DISTRICT ENERGY SYSTEM



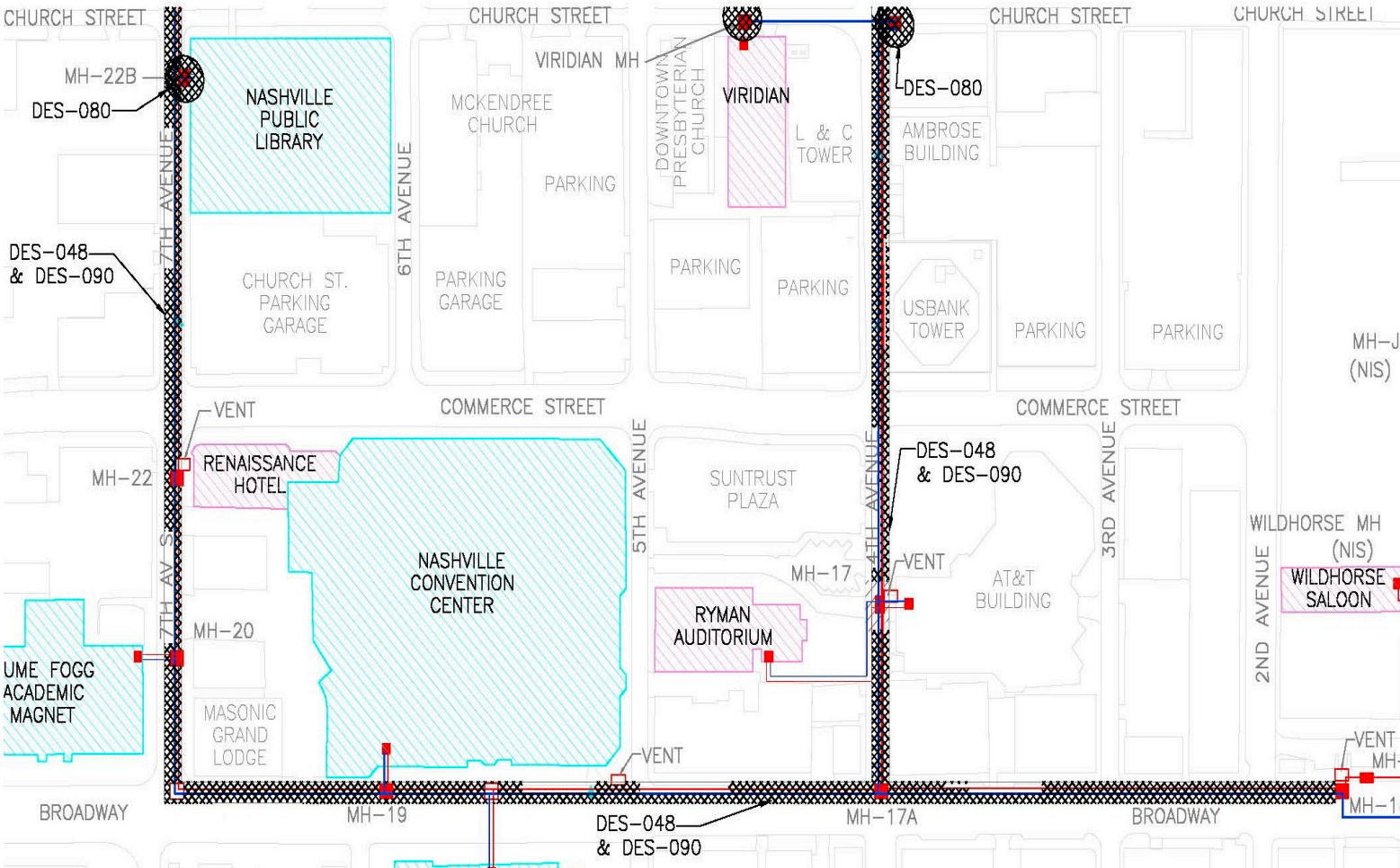
Active Capital Projects



Metro Nashville DISTRICT ENERGY SYSTEM



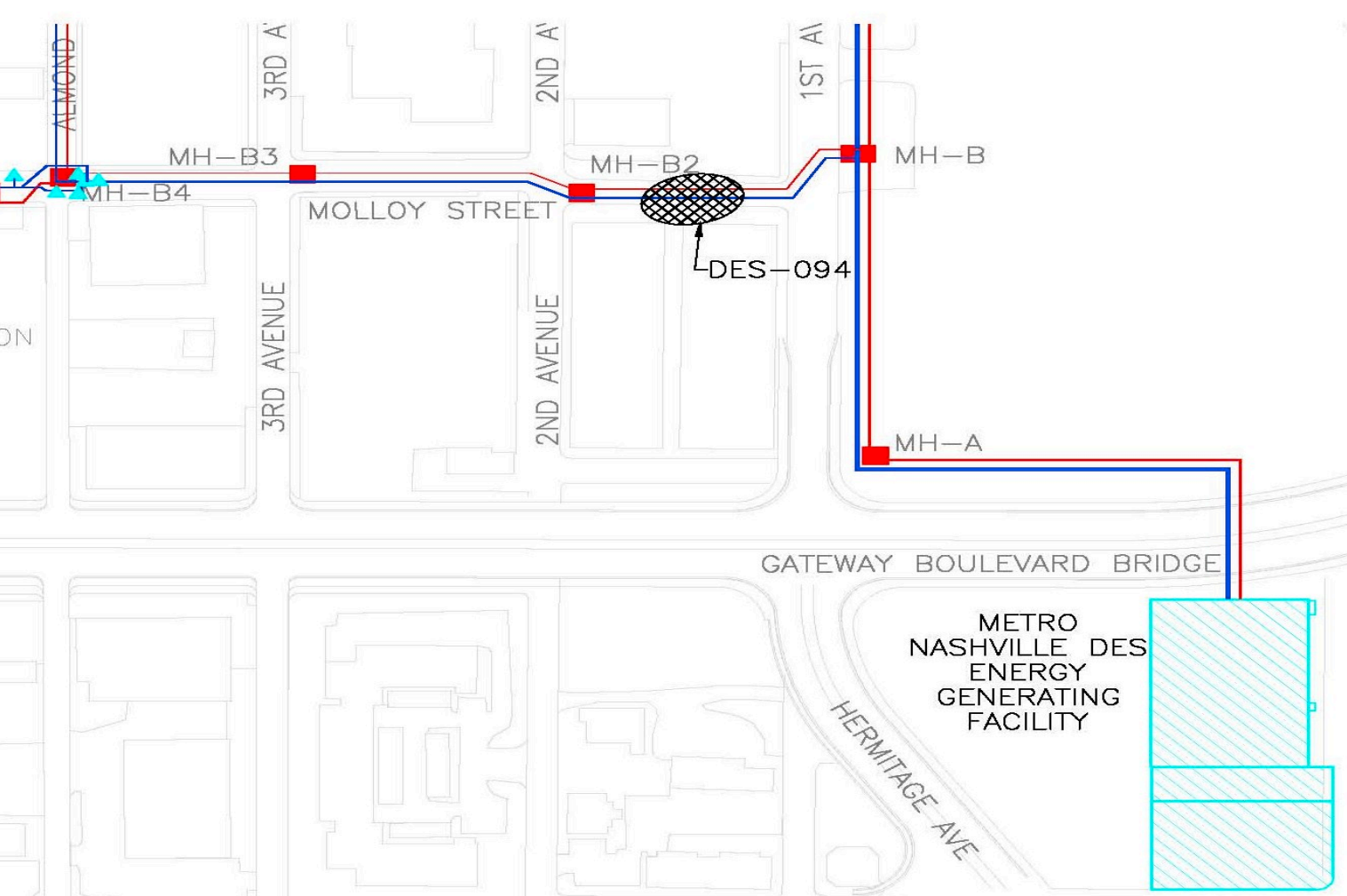
Active Capital Projects



Metro Nashville DISTRICT ENERGY SYSTEM



Active Capital Projects





Capital Projects Review

Capital Projects in Close-out

- DES 077: Expansion of Service to the Music City Convention Center – complete; awaiting service connection
- DES 081: Flood Related Repairs - closed
- DES 082: Andrew Jackson Steam Isolation Valve Replacement – closed
- DES 083: Manhole 13 Leak & Structural Component Repair – in closeout
- DES 086: Manhole 12 Roof Replacement – closed



8. Thermal Storage & Time of Use Rates

- Developing Capital Estimate
- Storage Tank Proposed Location at MDHA Property between Woodland St and James Robertson Bridges
- Anticipate 10 to 12 year Simple Return
- Benefits Include:
 - Reduced Electric Peak Demand Charge
 - Reduced Monthly Energy Cost (slightly)
 - Increased Potential for Customer Expansion North of Broadway



9. Music City Convention Center Expansion Update

- Substantial Completion 10/02/11 with Start-up of Steam and Condensate Lines
- In-building Piping at Metering Station (remains to be completed)
- Cooling Tower Testing – Completed
- EGF CHW Pumps – Under Construction
- CHW Service Required April 2012
- Steam Service Required Nov 2012



10. Potential New Customers

- Nashville Hyatt Place (Molloy & 3rd Ave S)
 - CHW Demand = 300 tons
 - Steam Demand = 9,000 pph
- Medical Mart
- Omni Hotel – *not going to be a DES Customer*



11. Other Board Member Items

12. Adjourn

Advisory Board Meeting Schedule

- FY12 – 2nd Quarter Meeting – February 16, 2012
- FY12 – 3rd Quarter Meeting – May 17, 2012
- FY12 – 4th Quarter Meeting – August 16, 2012
- FY13 – 1st Quarter Meeting – November 15, 2012