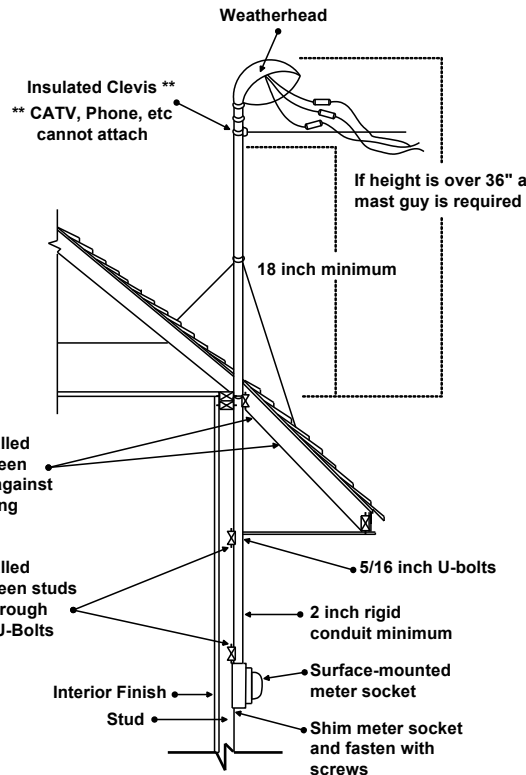
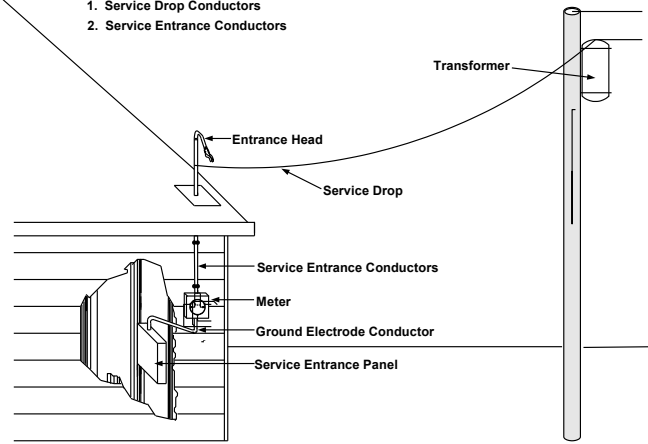


## SERVICE RECONNECT DIAGRAMS

Service Conductors Include:  
1. Service Drop Conductors  
2. Service Entrance Conductors



## MAJOR EMERGENCY PLAN IN EXTREME CONDITIONS

The Department of Codes and Building Safety also has an emergency electrical reconnect plan in the event of an extreme major emergency that goes beyond a day-to-day emergency. In the event that several thousand electrical services are damaged or destroyed at once this plan can be implemented.

The first phase of alert when this type of emergency occurs is to set up direct communications with the Office of Emergency Management (OEM), Mayor's Office, Nashville Electric Service, Metropolitan Police and Fire Departments and the news media. At this time the Codes Administration will dedicate office personnel and as many inspectors as needed for the Codes Office to be open and receive the emergency reconnect calls.



The Codes Administration will issue this formal Emergency Electrical Reconnect Plan to all agencies for communication information. Any questions about the Metro Codes and Building Safety plan or any comments and ideas about the plan are always welcomed.

**TO CALL FOR AN  
EMERGENCY RECONNECT  
PLEASE CALL**

**615-693-1742**

**Metro Nashville Government of  
Nashville and Davidson County**

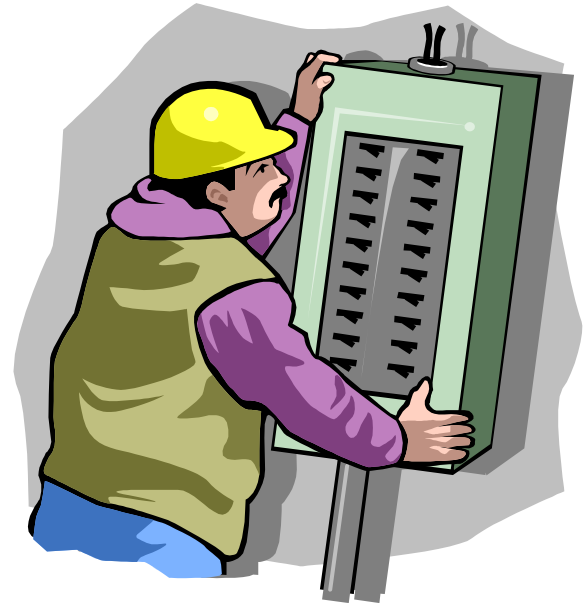
Metro Office Building—3rd Floor  
800 2nd Avenue, South  
P. O. Box 196350

Nashville, Tennessee 37219-6350  
(615) 862-6500

Business Hours 7:30 A.M. to 4:00 P.M.  
Monday through Friday

Visit our Website at [www.nashville.gov/codes](http://www.nashville.gov/codes)

## Emergency Electrical Reconnect Plan



**METROPOLITAN  
NASHVILLE & DAVIDSON  
COUNTY  
CODES AND BUILDING  
SAFETY DEPARTMENT**

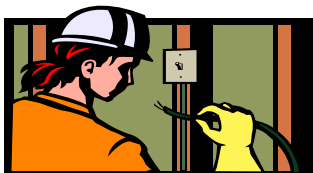
**JOHN COOPER, MAYOR**

## **Emergency Reconnects CALL 615-693-1742**

The Department of Codes and Building Safety provides twenty-four hour assistance to any emergency electrical service reconnect call.

"Emergency Reconnects," are emergencies which have resulted in power outages or destruction of electrical services. These normally include thunderstorms, windstorms, hailstorms, snowstorms, ice storms, prolonged freezing temperatures, fires, explosions, and vehicular accidents. Of course other catastrophes may also require response (tornado, earthquake, building collapse, etc...).

The Electrical Inspection Division of Codes and Building Safety is truly an emergency working unit. This pamphlet explains what the property owner's responsibility is and where it begins as far as an emergency reconnect for power is concerned.



## **Who Is Responsible for the Repairs?**

The property owner is responsible for repairs. This responsibility begins when Nashville Electric Service connects the service drop wires that run from the NES pole and transformer to the owner's building or house and then connects the service wires that run into the service riser and meter box.

A diagram is printed on the last page of this pamphlet that shows the NES service pole and transformer and the over head service entrance wires to a building or structure.

Any damage to the electrical system either to the electrical breaker panel or fuse box must be repaired by a licensed electrical contractor at the owner's expense.

## **What Steps Should Be Taken To Have Repairs Made?**

If wiring is not being replaced no inspection or a Service Release will be required. Relocation of services or increase of service size is **NOT** permitted.

If the structure is damaged the following steps must be taken to have electrical power reconnected by Nashville Electric Service:

(A) Secure the services of a licensed electrical contractor in Metropolitan Nashville and Davidson County to make the necessary repairs to the electrical system.

(B) After the electrical contractor has completed the work he will contact the Metro Codes Electrical Inspector on duty and request an electrical inspection.

(C) When the electrical inspector arrives at the requested location, he will inspect the work that has been done by the electrical contractor. If the inspector approves the work he will fill out a **yellow** approval card with the date, address, and his name. The yellow card will be attached to the meter base.

(D) If the electrical inspector rejects the work done by the contractor, the inspector will place a **red tag** (rejection notice) on the meter base. The inspector will call the contractor and tell the contractor what corrections must be made for the repairs to be approved. When the electrical contractor has completed and corrected the rejected items he will request a reinspection.

(E) As soon as the electrical inspector has approved the work a release number will be issued to Nashville Electric Service to restore the electrical power to the building or structure.



---

**Questions, comments, or suggestions about this emergency reconnect plan should be directed to the Department of Codes and Building Safety**

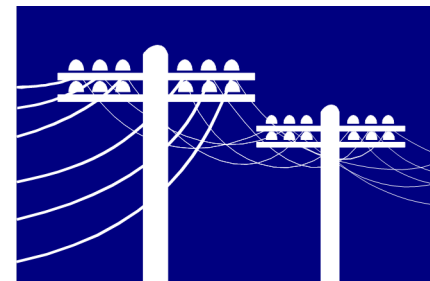
**CALL 615-693-1742**

**FOR AN EMERGENCY RECONNECT**

**Kenny Wilee  
Electrical Inspection Chief**

**(615) 862-6536**

---



***Life Safety...hire a licensed Electrical Contractor***